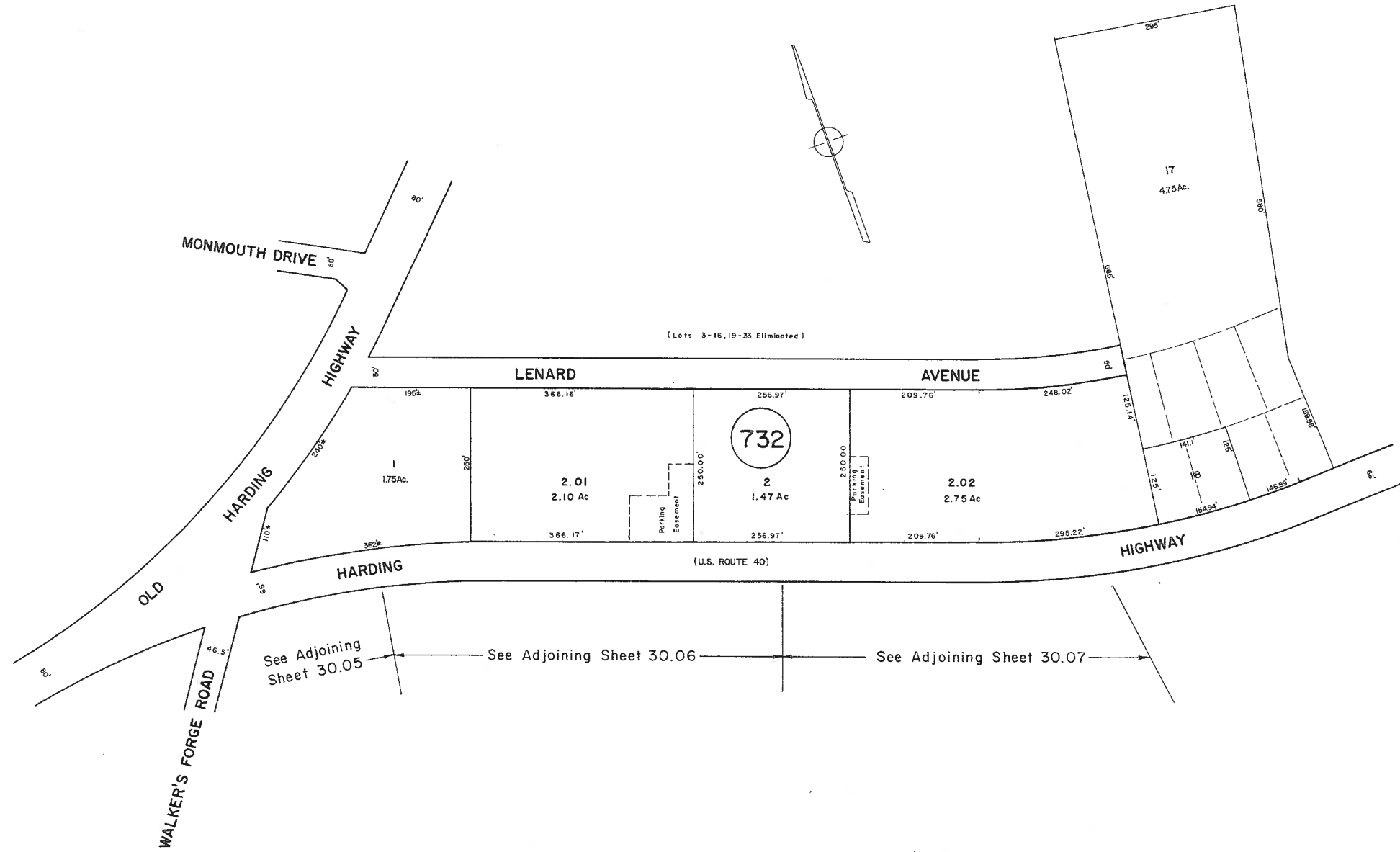


REVISIONS
WPHA 2-2-89

See Adjoining Sheet 30

See Adjoining Sheet 26.02

See Adjoining Sheet 30



See Adjoining Sheet 26

REVISED BY CHURCHILL - AUG. 2001

NEW JERSEY DEPARTMENT OF THE TREASURY
DIVISION OF TAXATION
LOCAL PROPERTY AND PUBLIC UTILITY BRANCH
APPROVED AS A TAX MAP PURSUANT TO THE
PROVISIONS OF CHAPTER 175, LAWS OF 1913, ETC.
FOR THE DIRECTOR, DIVISION OF TAXATION

John J. Johnson
BY: P.E. & L.S.
LIC. #15434 CHIEF, ENGINEERING SECTION
DATE: JAN 22 1989 SERIAL NO. 654

NEW JERSEY DEPARTMENT OF THE TREASURY
DIVISION OF TAXATION
LOCAL PROPERTY AND PUBLIC UTILITY BRANCH
APPROVED AS A TAX MAP PURSUANT TO THE
PROVISIONS OF CHAPTER 175, LAWS OF 1913, ETC.
FOR THE DIRECTOR, DIVISION OF TAXATION

Ronald J. Price
BY: P.E. & L.S.
DATE: MAR 18 1978 SERIAL NO. 578

TAX MAP
TOWNSHIP OF HAMILTON
ATLANTIC COUNTY, NEW JERSEY
SCALE: 1" = 100' DATE: JUNE 1, 1977

RONALD J. PRICE
PLEASANTVILLE, N.J.
N.J. LICENSE NO. 03801