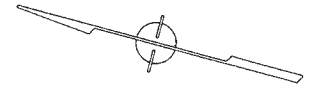
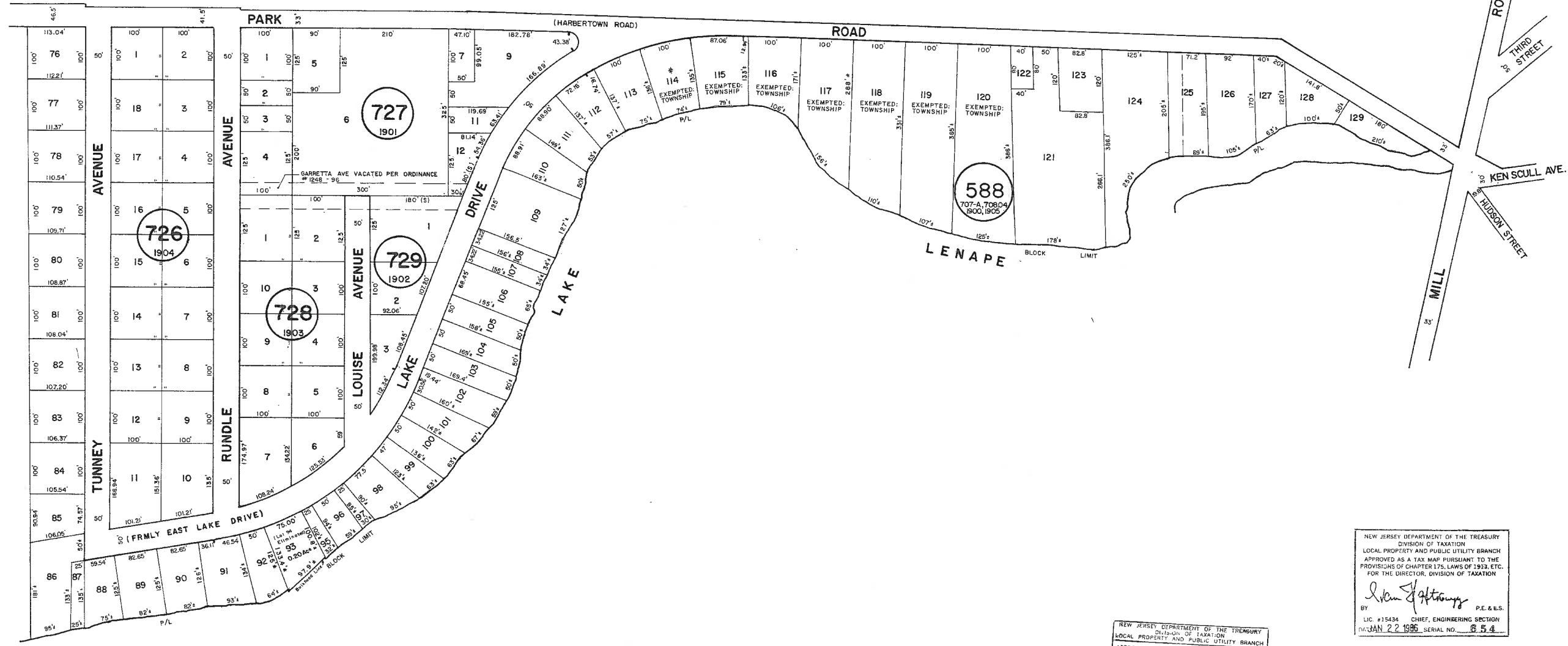


REVISIONS		
DATE	L.S. NAME	LIC. No.
5/7/97	KENNETH P. FRANK	L.S. 36727

See Adjoining Sheet 28.02

See Adjoining Sheet 28.03

See Adjoining Sheet 31.01



NEW JERSEY DEPARTMENT OF THE TREASURY  
 DIVISION OF TAXATION  
 LOCAL PROPERTY AND PUBLIC UTILITY BRANCH  
 APPROVED AS A TAX MAP PURSUANT TO THE  
 PROVISIONS OF CHAPTER 175, LAWS OF 1993, ETC.  
 FOR THE DIRECTOR, DIVISION OF TAXATION

*John J. Johnson*  
 BY P.E. & L.S.  
 LIC. #15434 CHIEF, ENGINEERING SECTION  
 DATE: JAN 22 1996, SERIAL NO. 654

NEW JERSEY DEPARTMENT OF THE TREASURY  
 DIVISION OF TAXATION  
 LOCAL PROPERTY AND PUBLIC UTILITY BRANCH  
 APPROVED AS A TAX MAP PURSUANT TO THE  
 PROVISIONS OF CHAPTER 175, LAWS OF 1993, ETC.  
 FOR THE DIRECTOR, DIVISION OF TAXATION

*[Signature]*  
 BY P.E. & L.S.  
 DATE: MAR 18 1970, SERIAL NO. 578

**TAX MAP**  
**TOWNSHIP OF HAMILTON**  
 ATLANTIC COUNTY, NEW JERSEY  
 SCALE: 1" = 100' DATE: JUNE 1, 1977

RONALD J. PRICE  
 PLEASANTVILLE, N.J.  
 N.J. LICENSE NO. 13901

\* EXEMPT TOWNSHIP OF HAMILTON

REVISED BY CHURCHILL - MAR. 2005, FEB. 2008  
 REV. BY ALEXANDER M. CHURCHILL ASSOC. - JAN '95

See Adjoining Sheet 28

See Adjoining Sheet 28.05