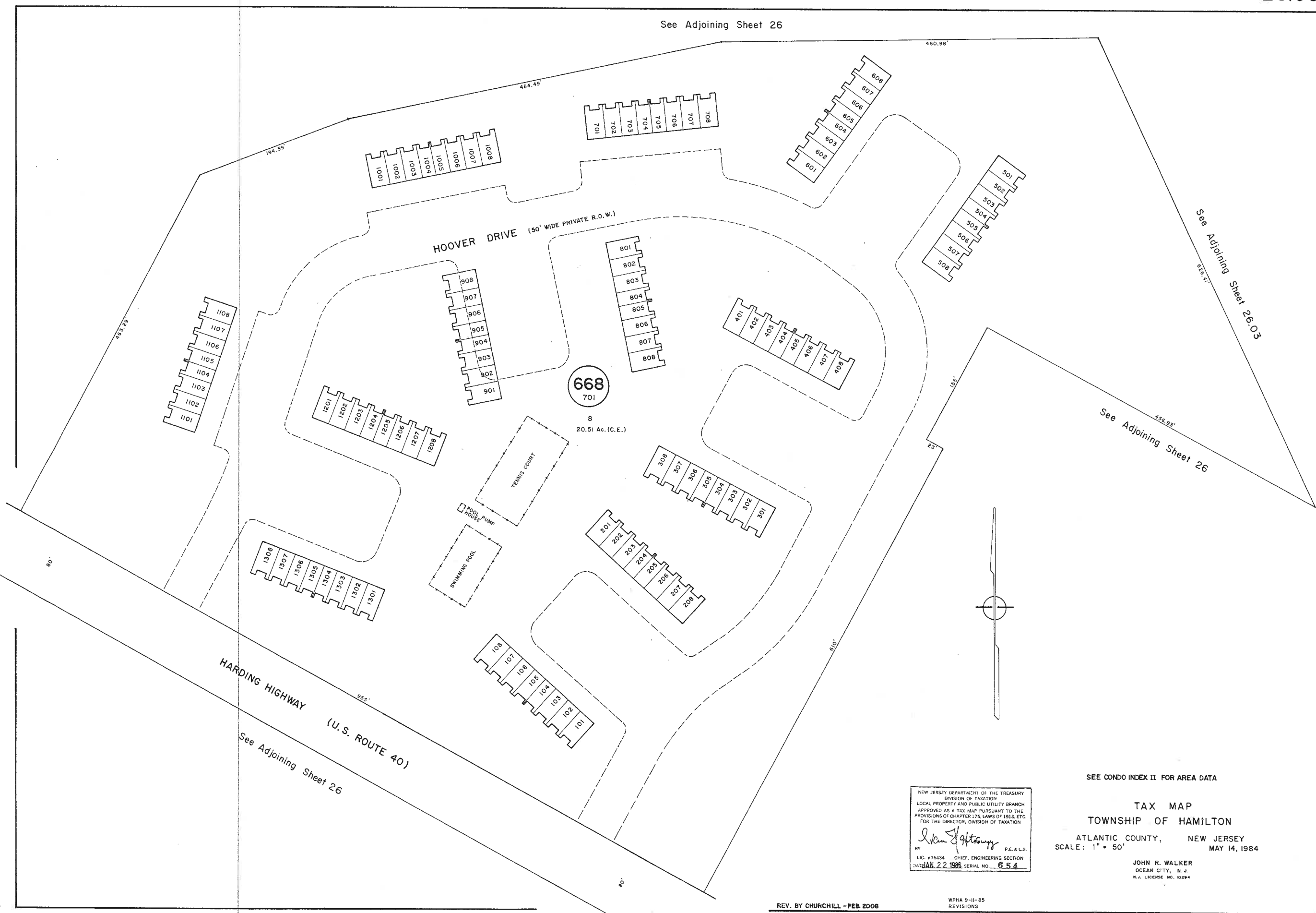


See Adjoining Sheet 26



See Adjoining Sheet 26.03

See Adjoining Sheet 26

See Adjoining Sheet 26

NEW JERSEY DEPARTMENT OF THE TREASURY  
 DIVISION OF TAXATION  
 LOCAL PROPERTY AND PUBLIC UTILITY BRANCH  
 APPROVED AS A TAX MAP PURSUANT TO THE  
 PROVISIONS OF CHAPTER 176, LAWS OF 1913, ETC.  
 FOR THE DIRECTOR, DIVISION OF TAXATION

BY *John R. Walker* P.E. & L.S.  
 LIC. #15434 CHIEF, ENGINEERING SECTION  
 DATE JAN. 22 1986 SERIAL NO. 654

SEE CONDO INDEX II FOR AREA DATA

**TAX MAP**  
**TOWNSHIP OF HAMILTON**  
 ATLANTIC COUNTY, NEW JERSEY  
 SCALE: 1" = 50' MAY 14, 1984

JOHN R. WALKER  
 OCEAN CITY, N.J.  
 N.J. LICENSE NO. 10294

REV. BY CHURCHILL - FEB 2008

WPHA 9-II-85 REVISIONS