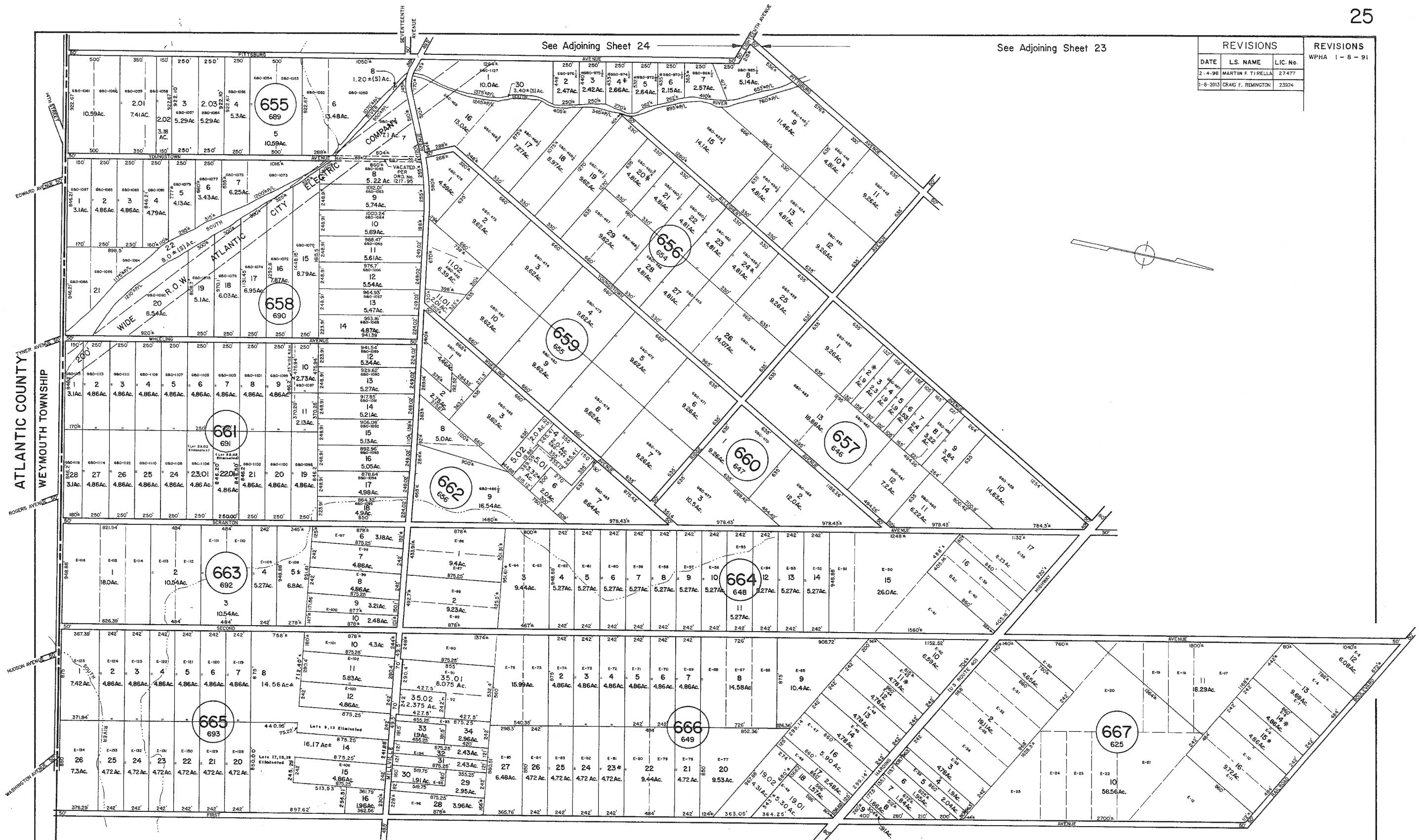


REVISIONS			REVISIONS
DATE	L.S. NAME	L.I.C. No.	WPHA 1-8-91
2-4-98	MARTIN F. TIRELLA	27477	
1-8-2013	CRAIG F. REMINGTON	23924	



See Adjoining Sheet 24

See Adjoining Sheet 23

See Adjoining Sheet 26

NOTE: LETTERS "G&O" INDICATE NUMBERS ON MAP OF RICHLAND COLONY BY GILBERT & O'CALLAGHAN
 LETTER "E" INDICATES NUMBERS ON MAP OF EDWINA BY A.M. BONISLOWSKI
 * EXEMPT TOWNSHIP OF HAMILTON

NEW JERSEY DEPARTMENT OF THE TREASURY
 DIVISION OF TAXATION
 LOCAL PROPERTY AND PUBLIC UTILITY BRANCH
 APPROVED AS A TAX MAP PURSUANT TO THE
 PROVISIONS OF CHAPTER 175, LAWS OF 1993, ETC.
 FOR THE DIRECTOR, DIVISION OF TAXATION

Ronald J. Price
 P.E. & L.S.
 L.I.C. #15634 CHIEF, ENGINEERING SECTION
 DATE: JAN 22 1996 SERIAL NO. 654

NEW JERSEY DEPARTMENT OF THE TREASURY
 DIVISION OF TAXATION
 LOCAL PROPERTY AND PUBLIC UTILITY BRANCH
 APPROVED AS A TAX MAP PURSUANT TO THE
 PROVISIONS OF CHAPTER 175, LAWS OF 1993, ETC.
 FOR THE DIRECTOR, DIVISION OF TAXATION

Ronald J. Price
 P.E. & L.S.
 L.I.C. #5099
 MAR 18 1996 SERIAL NO. 573

TAX MAP
 TOWNSHIP OF HAMILTON
 ATLANTIC COUNTY, NEW JERSEY
 SCALE: 1" = 400'
 DATE: JUNE 1, 1977

RONALD J. PRICE
 PLEASANTVILLE, N.J.
 N.J. LICENSE NO. 15901

REVISED BY CHURCHILL - OCT. 2002, MAR. 2004, AUG. 2004, JAN. 2007, FEB. 2008

WPHA 9-9-86
WPHA 12-2-85
REVISIONS

See Adjoining Sheet 18