

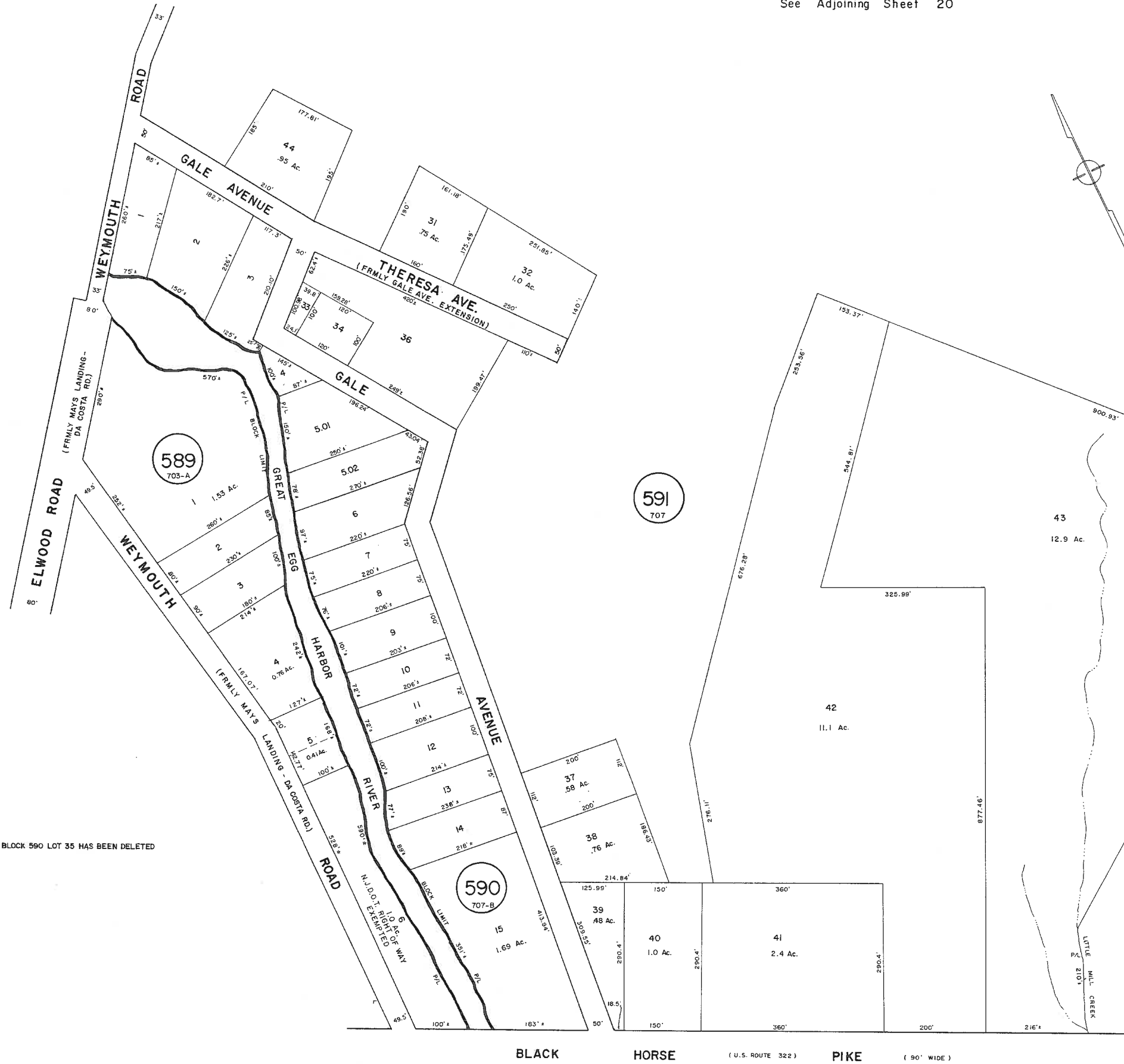
REVISIONS  
WPHA 1-15-92

See Adjoining Sheet 20

See Adjoining Sheet 6

See Adjoining Sheet 20

NOTE: BLOCK 590 LOT 35 HAS BEEN DELETED



NEW JERSEY DEPARTMENT OF THE TREASURY  
DIVISION OF TAXATION  
LOCAL PROPERTY AND PUBLIC UTILITY BRANCH  
APPROVED AS A TAX MAP PURSUANT TO THE  
PROVISIONS OF CHAPTER 175, LAWS OF 1913, ETC.  
FOR THE DIRECTOR, DIVISION OF TAXATION

*J. N. [Signature]*  
BY: [Signature] P.E. & L.S.  
LIC #15434 CHIEF, ENGINEERING SECTION  
DATE JAN 22 1988 SERIAL NO. 654

NEW JERSEY DEPARTMENT OF THE TREASURY  
DIVISION OF TAXATION  
LOCAL PROPERTY AND PUBLIC UTILITY BRANCH  
APPROVED AS A TAX MAP PURSUANT TO THE  
PROVISIONS OF CHAPTER 175, LAWS OF 1913, ETC.  
FOR THE DIRECTOR, DIVISION OF TAXATION

*J. N. [Signature]*  
BY: [Signature] P.E. & L.S.  
LIC #15434 CHIEF, ENGINEERING SECTION  
DATE MAR 16 1989 SERIAL NO. 578

**TAX MAP**  
**TOWNSHIP OF HAMILTON**  
ATLANTIC COUNTY, NEW JERSEY  
SCALE: 1" = 100' DATE: JUNE 1, 1977

RONALD J. PRICE  
PLEASANTVILLE, N.J.  
N.J. LICENSE NO. 5901

See Adjoining Sheet 15

See Adjoining Sheet 19

REV. BY CHURCHILL - APRIL 2008  
REV. BY ALEXANDER M. CHURCHILL ASSOC. - JULY '94, JAN. '95