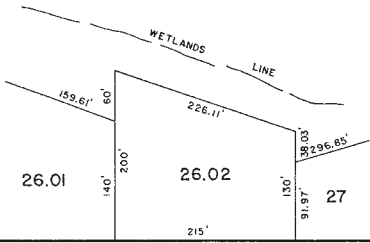


REVISIONS		
DATE	L.S. NAME	L.I.C. No.
2-4-98	MARTIN F. TIRELLA	27477
10-24-08	C.F. REMINGTON	23924

See Adjoining Sheet 12

See Adjoining Sheet 21



BLACK HORSE PIKE - RT. 322
(90' WIDE)

INSET DETAIL "A"
SCALE: 1"=100'

TAX MAP
TOWNSHIP OF HAMILTON
ATLANTIC COUNTY, NEW JERSEY
SCALE: 1" = 800' DATE: JUNE 1, 1977

RONALD J. PRICE
PLEASANTVILLE, N.J.
N.J. LICENSE NO. 19901

NEW JERSEY DEPARTMENT OF THE TREASURY
DIVISION OF TAXATION
LOCAL PROPERTY AND PUBLIC UTILITY BRANCH
APPROVED AS A TAX MAP PURSUANT TO THE
PROVISIONS OF CHAPTER 175, LAWS OF 1913, ETC.
FOR THE DIRECTOR, DIVISION OF TAXATION
J. N. [Signature]
BY: LIC. # 5009 P.E. & L.S. CHIEF
DATE: MAR 16 1978 SERIAL NO. 573

NEW JERSEY DEPARTMENT OF THE TREASURY
DIVISION OF TAXATION
LOCAL PROPERTY AND PUBLIC UTILITY BRANCH
APPROVED AS A TAX MAP PURSUANT TO THE
PROVISIONS OF CHAPTER 175, LAWS OF 1913, ETC.
FOR THE DIRECTOR, DIVISION OF TAXATION
Alexander M. Churchill
BY: LIC. # 15434 P.E. & L.S. CHIEF, ENGINEERING SECTION
DATE: JAN 22 1986 SERIAL NO. 654

See Adjoining Sheet 9

See Adjoining Sheet 6

See Adjoining Sheet 15

See Adjoining Sheet 19

REV. BY CHURCHILL-FEB. 2008
REV. BY CHURCHILL-FEB. 2001
REV. BY ALEXANDER M. CHURCHILL ASSOC.-JAN.'95,MAR.'95

WPHA 6-10-85
WPHA 11-9-84
REVISIONS

See Adjoining Sheet 29

See Adjoining Sheet 33

See Adjoining Sheet 32

See Adjoining Sheet 31

