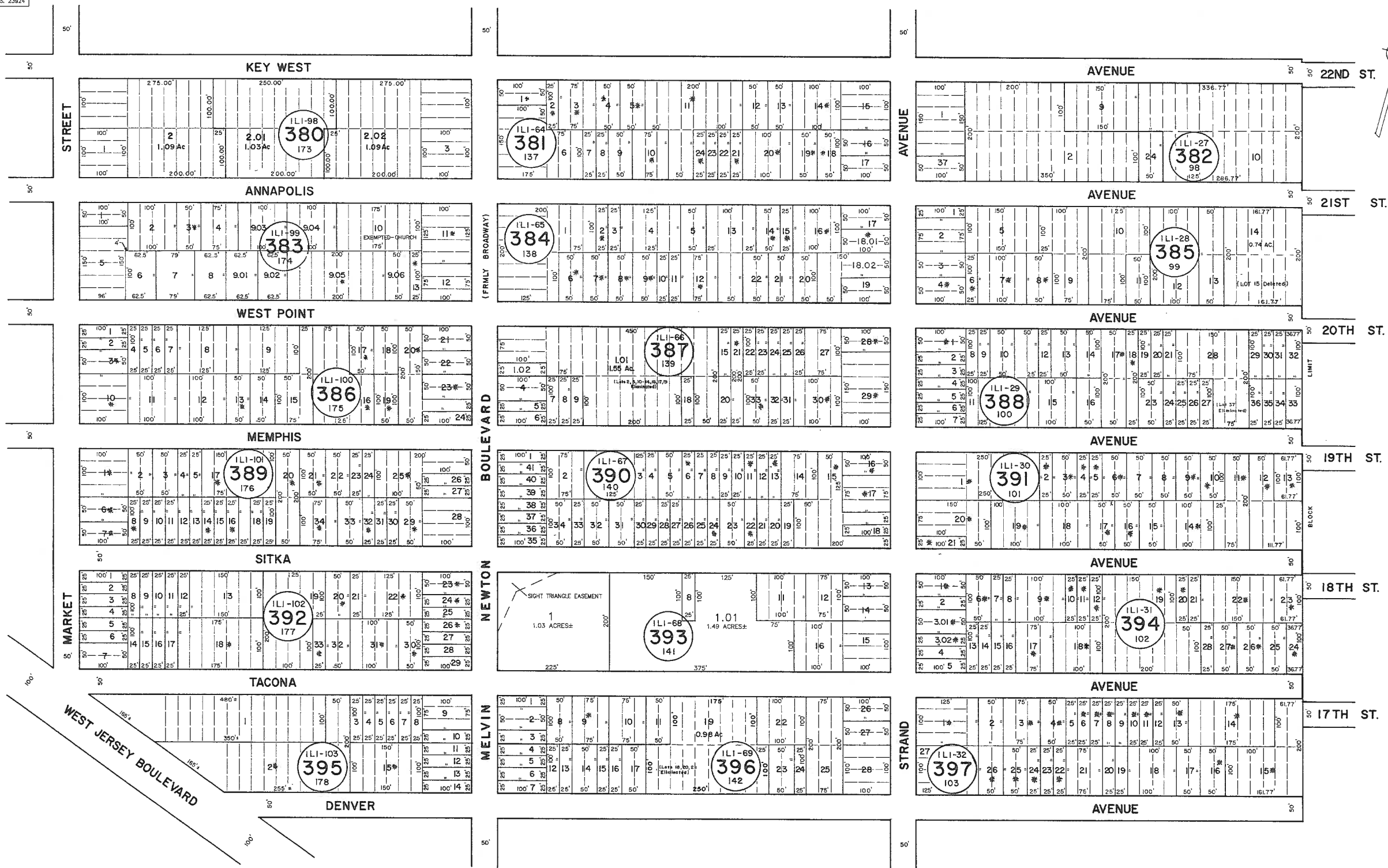


See Adjoining Sheet 14.09

REVISIONS		
DATE	LS NAME	LIC. NO.
9-29-98	MARTIN F. TIRELLA	27477
10-1-09	CRAIG F. REMINGTON	L.S. 23924
1-6-13	CRAIG F. REMINGTON	L.S. 23924

See Adjoining Sheet 14.08

See Adjoining Sheet 14



NOTE: LETTERS "ILI" INDICATES NUMBERS ON MAP OF INDUSTRIAL LAND COMPANY  
 \* EXEMPT TOWNSHIP OF HAMILTON

NEW JERSEY DEPARTMENT OF THE TREASURY  
 DIVISION OF TAXATION  
 LOCAL PROPERTY AND PUBLIC UTILITY BRANCH  
 APPROVED AS A TAX MAP PURSUANT TO THE  
 PROVISIONS OF CHAPTER 175, LAWS OF 1913, ETC.  
 FOR THE DIRECTOR, DIVISION OF TAXATION  
*Alexander M. Churchhill*  
 P.E. & L.S.  
 LIC. #15434  
 DATE JAN 22 1996

NEW JERSEY DEPARTMENT OF THE TREASURY  
 DIVISION OF TAXATION  
 LOCAL PROPERTY AND PUBLIC UTILITY BRANCH  
 APPROVED AS A TAX MAP PURSUANT TO THE  
 PROVISIONS OF CHAPTER 175, LAWS OF 1913, ETC.  
 FOR THE DIRECTOR, DIVISION OF TAXATION  
*Ronald J. Price*  
 P.E. & L.S.  
 LIC. #15434  
 DATE MAR 16 1999

TAX MAP  
 TOWNSHIP OF HAMILTON  
 ATLANTIC COUNTY, NEW JERSEY  
 SCALE: 1" = 100'  
 DATE: JUNE 1, 1977  
 RONALD J. PRICE  
 PLEASANTVILLE, N.J.  
 N.J. LICENSE NO. 13901

See Adjoining Sheet 14.11

REV. BY ALEXANDER M. CHURCHILL ASSOC. - JAN. '95  
 REVISED BY RWV ENG. TO NOV. 2006  
 REV. BY CHURCHILL - AUG. '99, JULY 2001, MAY 2004, AUG. 2004