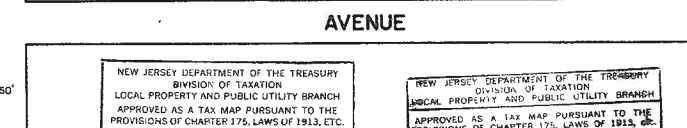
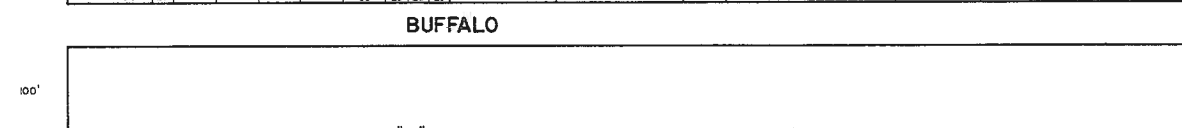
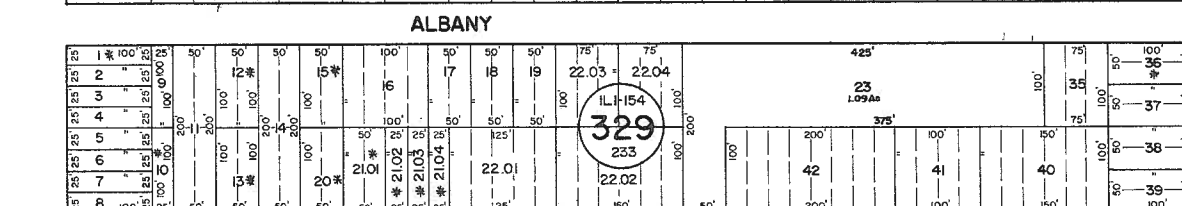
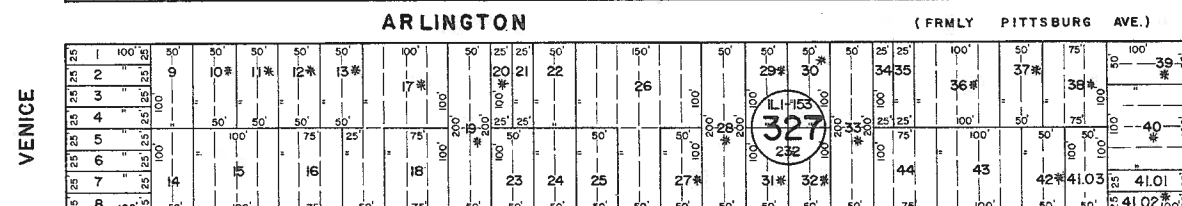
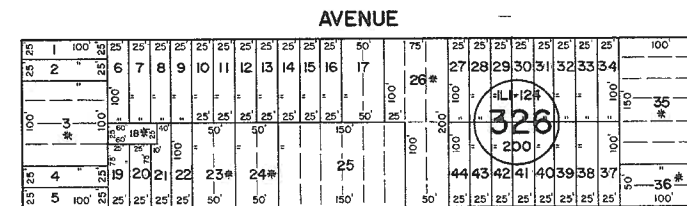
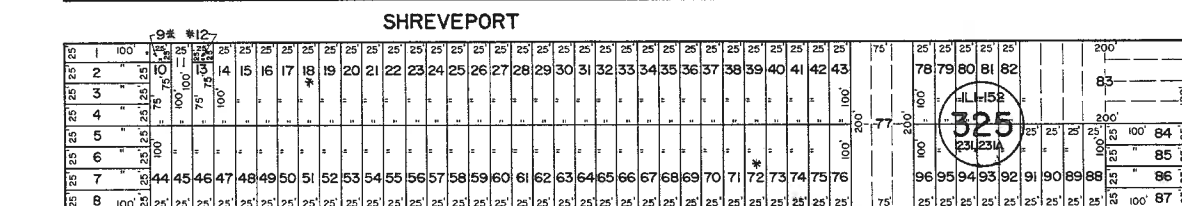
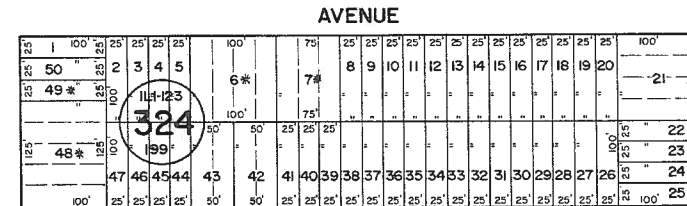
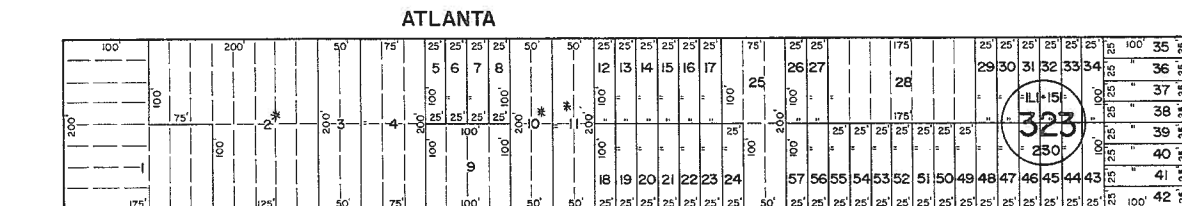
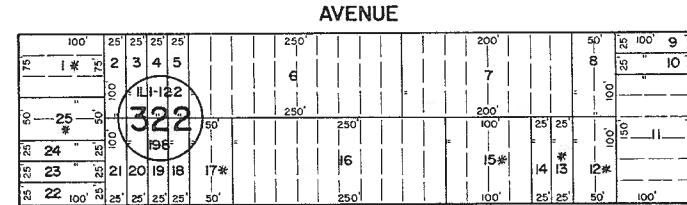
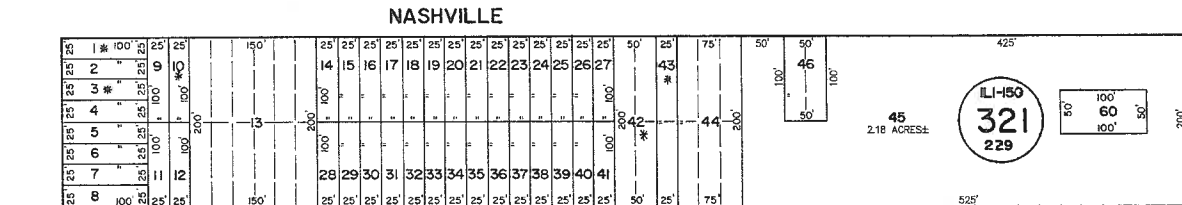
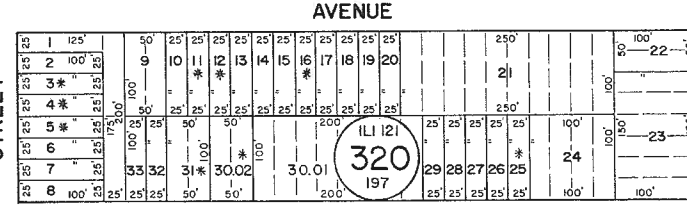
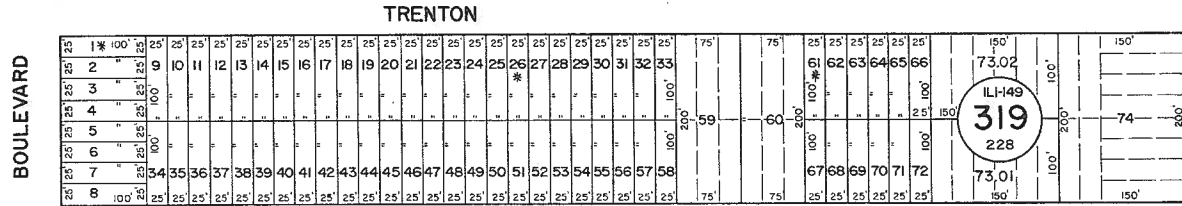
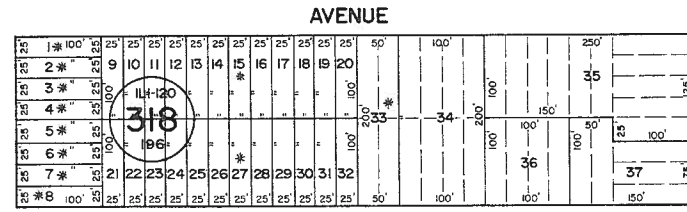
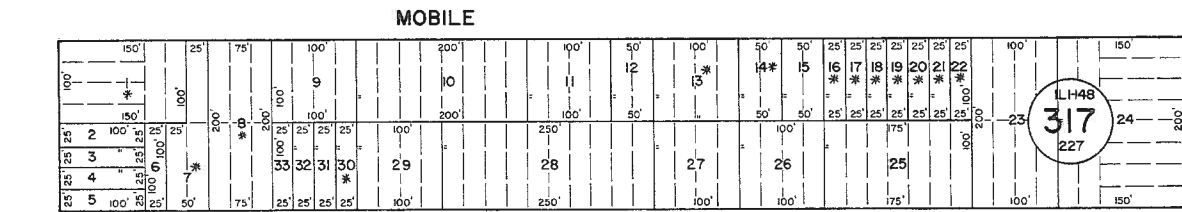


See Adjoining Sheet 14.03



NOTE: LETTERS "IL" INDICATE NUMBERS ON MAP OF INDUSTRIAL LAND COMPANY.
 * EXEMPT TOWNSHIP OF HAMILTON

NEW JERSEY DEPARTMENT OF THE TREASURY
 DIVISION OF TAXATION
 LOCAL PROPERTY AND PUBLIC UTILITY BRANCH
 APPROVED AS A TAX MAP PURSUANT TO THE PROVISIONS OF CHAPTER 175, LAWS OF 1913, ETC. FOR THE DIRECTOR, DIVISION OF TAXATION

John J. Anthony P.E. & L.S.
 LIC. #15434 CHIEF, ENGINEERING SECTION
 DATE JAN. 22, 1988 SERIAL NO. 654

NEW JERSEY DEPARTMENT OF THE TREASURY
 DIVISION OF TAXATION
 LOCAL PROPERTY AND PUBLIC UTILITY BRANCH
 APPROVED AS A TAX MAP PURSUANT TO THE PROVISIONS OF CHAPTER 175, LAWS OF 1913, ETC. FOR THE DIRECTOR, DIVISION OF TAXATION

J. Williams P.E. & L.S.
 LIC. #5009
 DATE MAR. 16, 1978 SERIAL NO. 5737

TAX MAP
 TOWNSHIP OF HAMILTON
 ATLANTIC COUNTY, NEW JERSEY
 SCALE: 1" = 100'
 DATE: JUNE 1, 1977

RONALD J. PRICE
 PLEASANTVILLE, N.J.
 N.J. LICENSE NO. 19901

See Adjoining Sheet 14.05

See Adjoining Sheet 14.07

See Adjoining Sheet 14.09

REVISED BY R&V - 1-8-2013
 REV. BY CHURCHILL - FEB 2008
 REV. BY ALEXANDER M. CHURCHILL ASSOC. - JAN. '95

See Adjoining Sheet 14.08