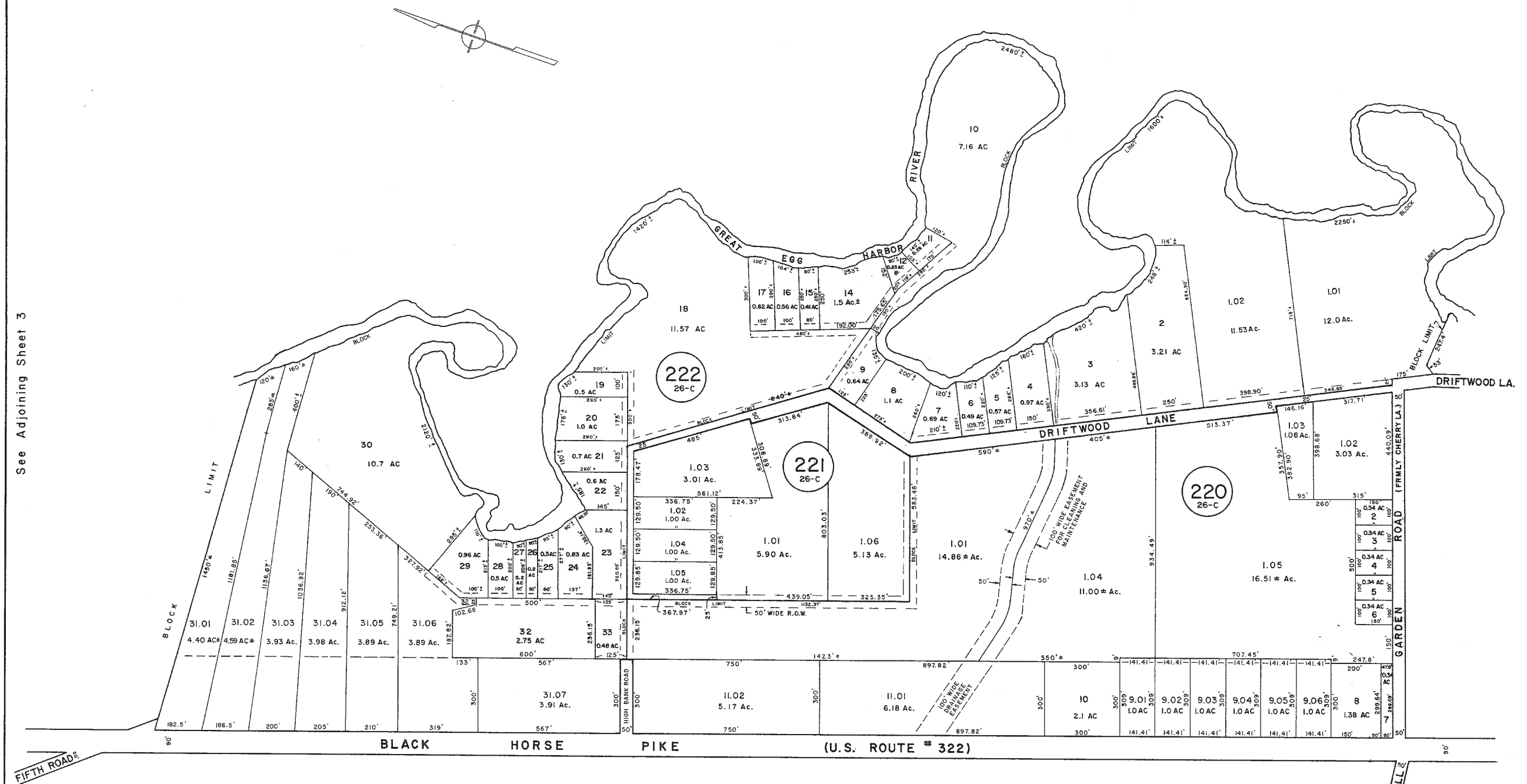


REVISIONS		
DATE	LS NAME	LIC. NO.
10-10-96	MARTIN F. TRELLA	27477

See Adjoining Sheet 7

See Adjoining Sheet 3

See Adjoining Sheet 6.01



* EXEMPT TOWNSHIP OF HAMILTON

NEW JERSEY DEPARTMENT OF THE TREASURY
 DIVISION OF TAXATION
 LOCAL PROPERTY AND PUBLIC UTILITY BRANCH
 APPROVED AS A TAX MAP PURSUANT TO THE
 PROVISIONS OF CHAPTER 175, LAWS OF 1913, ETC.
 FOR THE DIRECTOR, DIVISION OF TAXATION

John J. Gattuso
 P.E. & L.S.
 L.C. #15434 CHIEF ENGINEERING SECTION
 DATE JAN 22 1996 SERIAL NO. 654

NEW JERSEY DEPARTMENT OF THE TREASURY
 DIVISION OF TAXATION
 LOCAL PROPERTY AND PUBLIC UTILITY BRANCH
 APPROVED AS A TAX MAP PURSUANT TO THE
 PROVISIONS OF CHAPTER 175, LAWS OF 1913, ETC.
 FOR THE DIRECTOR, DIVISION OF TAXATION

J. H. Deane
 P.E. & L.S.
 L.C. #15434 CHIEF ENGINEERING SECTION
 DATE JAN 18 1978 SERIAL NO. 573

TAX MAP
TOWNSHIP OF HAMILTON
 ATLANTIC COUNTY, NEW JERSEY
 SCALE: 1" = 200'
 DATE: JUNE 1, 1977

RONALD J. PRICE
 PLEASANTVILLE, N.J.
 N.J. LICENSE NO. 12901

REVISED BY CHURCHILL AUG 2007, FEB. 2008

See Adjoining Sheet 2

WPHA 7-7-87
 WPHA 12-17-84
 WPHS 5-13-85
 REVISIONS