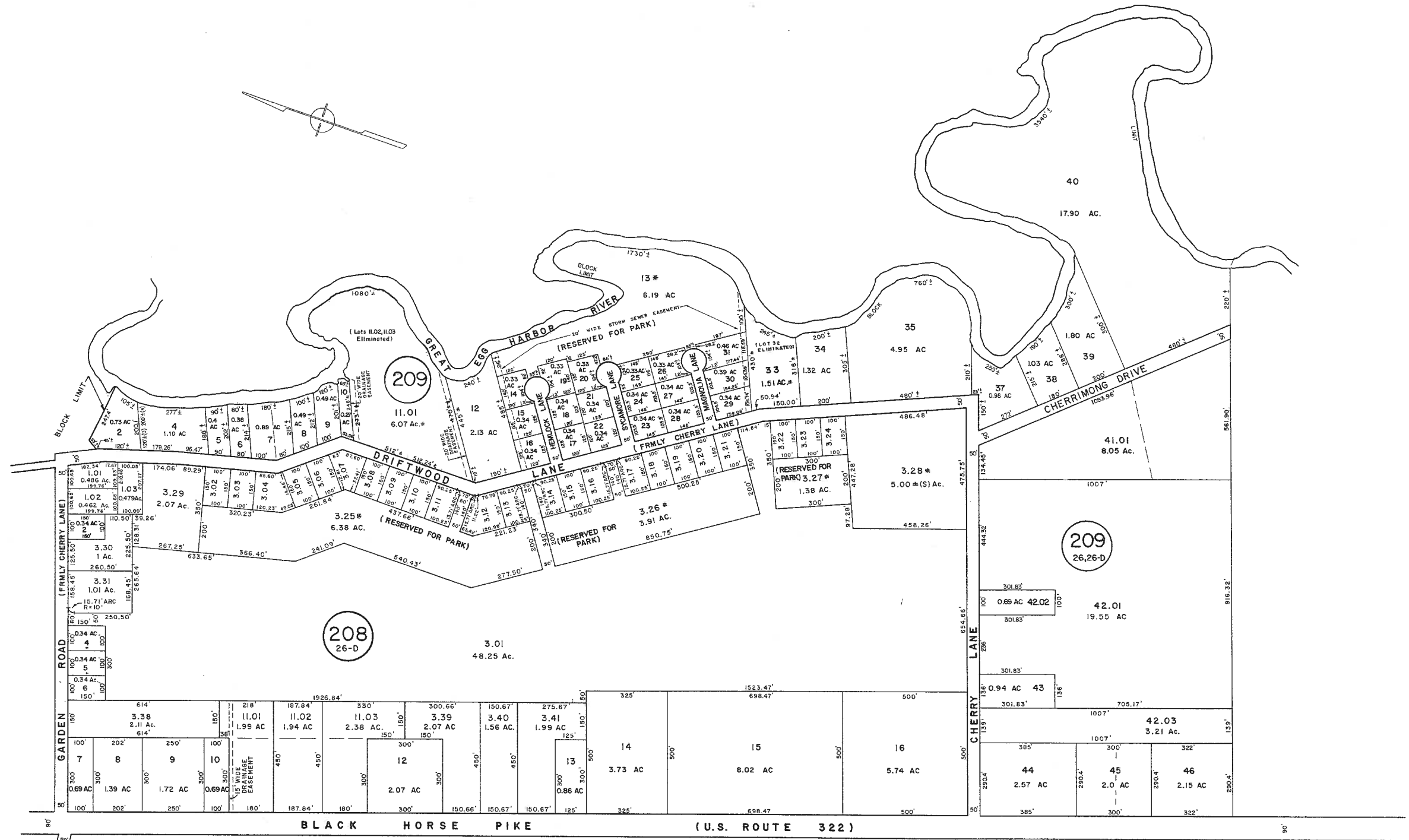


REVISIONS
WPHA 12-13-88

DATE	LS NAME	LIC. NO.
10-10-86	MARTIN F. TIRELLA	27477
12-3-2010	RAY ENGINEERS GRAC. F. SEMINGTON	23624
10-16-2011	RAY ENGINEERS GRAC. F. SEMINGTON	23624

See Adjoining Sheet 7

See Adjoining Sheet 7.01



See Adjoining Sheet 6

EXEMPT TOWNSHIP OF HAMILTON

NEW JERSEY DEPARTMENT OF THE TREASURY
DIVISION OF TAXATION
LOCAL PROPERTY AND PUBLIC UTILITY BRANCH
APPROVED AS A TAX MAP PURSUANT TO THE
PROVISIONS OF CHAPTER 173, LAWS OF 1983, ETC.
FOR THE DIRECTOR, DIVISION OF TAXATION

Susan J. Heston
BY: P.E. & L.S.
LIC. #15434 CHIEF, ENGINEERING SECTION
JAN 22 1988 SERIAL NO. 054

NEW JERSEY DEPARTMENT OF THE TREASURY
DIVISION OF TAXATION
LOCAL PROPERTY AND PUBLIC UTILITY BRANCH
APPROVED AS A TAX MAP PURSUANT TO THE
PROVISIONS OF CHAPTER 173, LAWS OF 1983, ETC.
FOR THE DIRECTOR, DIVISION OF TAXATION

J. P. Price
BY: P.E. & L.S.
DATE: MAR 16 1977 SERIAL NO. 578

TAX MAP
TOWNSHIP OF HAMILTON
ATLANTIC COUNTY, NEW JERSEY
SCALE: 1" = 200' DATE: JUNE 1, 1977

RONALD J. PRICE
PLEASANTVILLE, N.J.
N.J. LICENSE NO. 15901

REVISED BY CHURCHILL- SEPT. 2000, MAY 2002, JUNE 2007, FEB. 2008
REVISED BY ALEXANDER M. CHURCHILL ASSOC.- NOV. 1994, MAR. '95, AUG. '95

See Adjoining Sheet 6

WPHA 12-2-85
WPHA 5-7-84
WPTH 7-26-83
REVISIONS