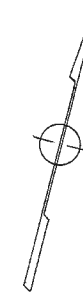


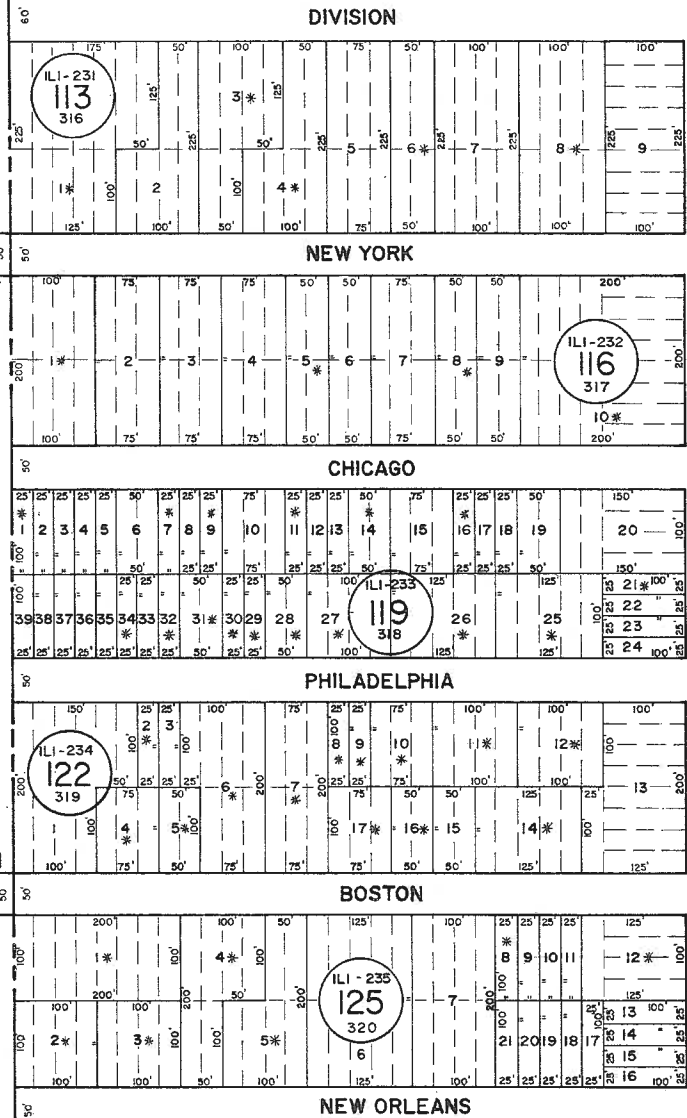
See Adjoining Sheet 5



ATLANTIC COUNTY
BUENA VISTA TOWNSHIP

WEYMOUTH
AVENUE

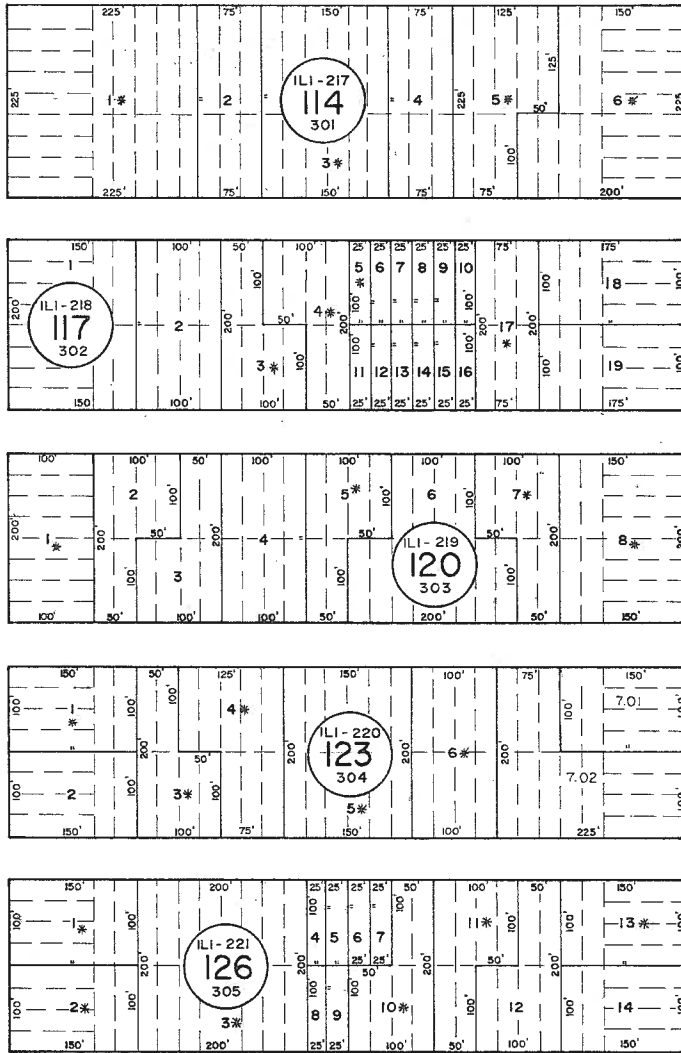
HIGH
STREET



FRONT STREET

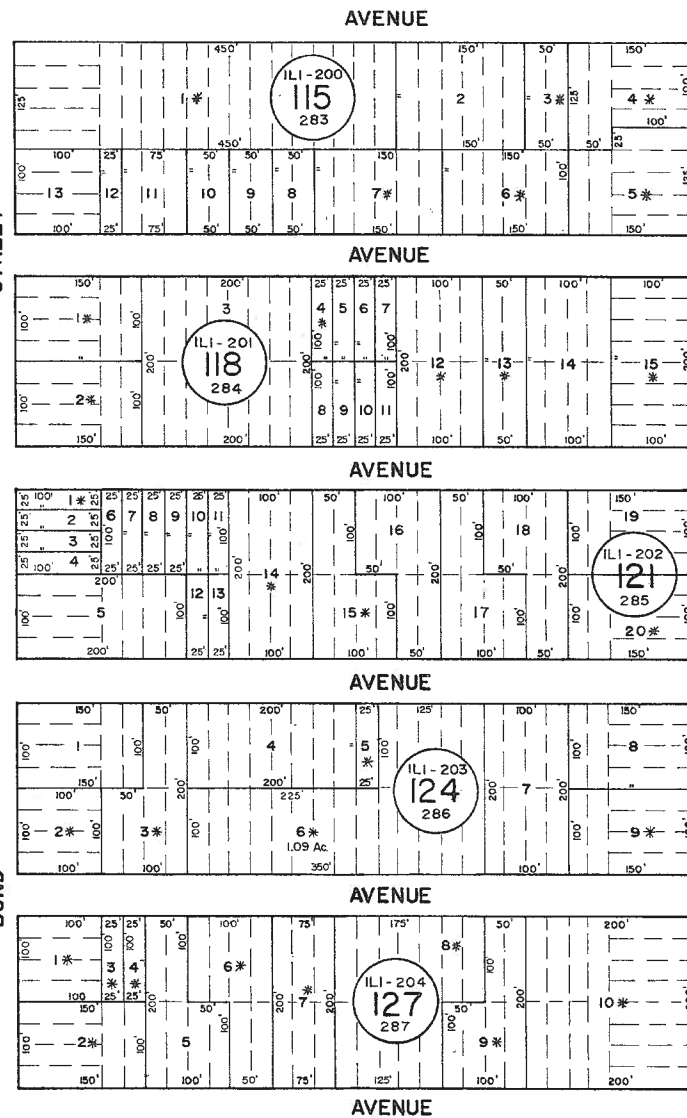
AVENUE

LEXINGTON



STREET

BOND



AVENUE

AVENUE

AVENUE

AVENUE

AVENUE

AVENUE

60'

60'

50'

50'

50'

50'

NOTE: LETTERS "ILI" INDICATES NUMBER ON MAP OF INDUSTRIAL LAND COMPANY

* EXEMPT TOWNSHIP OF HAMILTON

NEW JERSEY DEPARTMENT OF THE TREASURY
DIVISION OF TAXATION
LOCAL PROPERTY AND PUBLIC UTILITY BRANCH
APPROVED AS A TAX MAP PURSUANT TO THE
PROV. S. 15-15 OF CHAPTER 172, LAWS OF 1984, ETC.
FOR THE DIRECTOR, DIVISION OF TAXATION

John J. Harty
P.E. & L.S.
LIC. # 15434
DATE: JAN 22 1988 SERIAL NO. 54

NEW JERSEY DEPARTMENT OF THE TREASURY
DIVISION OF TAXATION
LOCAL PROPERTY AND PUBLIC UTILITY BRANCH
APPROVED AS A TAX MAP PURSUANT TO THE
PROVISIONS OF CHAPTER 172, LAWS OF 1984, ETC.
FOR THE DIRECTOR, DIVISION OF TAXATION

J. N. Deane
P.E. & L.S.
LIC. # 5006
DATE: MAR 10 1979 SERIAL NO. 573

TAX MAP
TOWNSHIP OF HAMILTON
ATLANTIC COUNTY, NEW JERSEY
SCALE: 1" = 100'
DATE: JUNE 1, 1977

RONALD J. PRICE
PLEASANTVILLE, N.J.
N.J. LICENSE NO. 13901

See Adjoining Sheet 5.02

See Adjoining Sheet 5.05

REV. BY R&V - 1-8-2013
REV. BY CHURCHILL - FEB. 2008