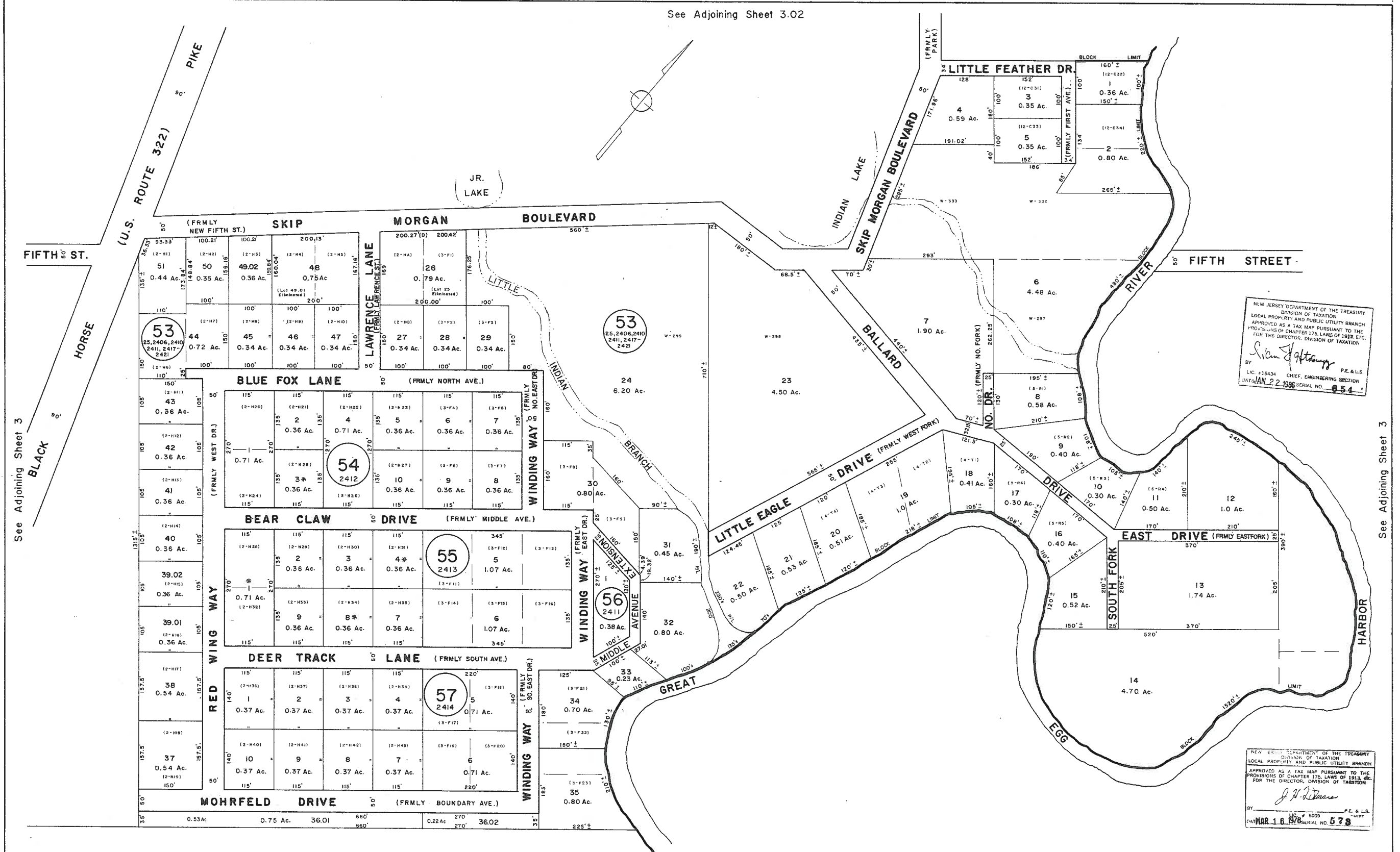


See Adjoining Sheet 3.02



NEW JERSEY DEPARTMENT OF THE TREASURY
 DIVISION OF TAXATION
 LOCAL PROPERTY AND PUBLIC UTILITY BRANCH
 APPROVED AS A TAX MAP PURSUANT TO THE
 PROVISIONS OF CHAPTER 175, LAWS OF 1952, ETC.
 FOR THE DIRECTOR, DIVISION OF TAXATION
 BY: *Steven J. Gattuso* P.E. & L.S.
 LIC. #15434 CHIEF ENGINEERING SECTION
 DATE: JAN 22 1996 SERIAL NO. 654

NEW JERSEY DEPARTMENT OF THE TREASURY
 DIVISION OF TAXATION
 LOCAL PROPERTY AND PUBLIC UTILITY BRANCH
 APPROVED AS A TAX MAP PURSUANT TO THE
 PROVISIONS OF CHAPTER 175, LAWS OF 1952, ETC.
 FOR THE DIRECTOR, DIVISION OF TAXATION
 BY: *J. H. Deane* P.E. & L.S.
 LIC. # 5009 CHIEF ENGINEERING SECTION
 DATE: MAR 16 1978 SERIAL NO. 578

See Adjoining Sheet 3

See Adjoining Sheet 3

NOTE: NUMBERS IN PARENTHESIS DENOTES LOTS ON MAP OF INDIAN BRANCH PARK
 LETTER "W" INDICATES NUMBER ON MAP OF WEYMOUTH FARM & AGRICULTURAL COMPANY
 * EXEMPT TOWNSHIP OF HAMILTON

TAX MAP
 TOWNSHIP OF HAMILTON
 ATLANTIC COUNTY, NEW JERSEY
 SCALE: 1" = 100' DATE: JUNE 1, 1977

RONALD J. PRICE
 PLEASANTVILLE, N.J.
 N.J. LICENSE NO. 15901

REV. BY ALEXANDER M. CHURCHILL ASSOC. - JAN. '95, MAR. '96

See Adjoining Sheet 3

REV. BY CHURCHILL - APRIL 2004, SEPT. 2006, FEB. 2008