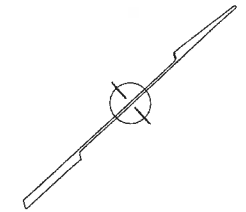
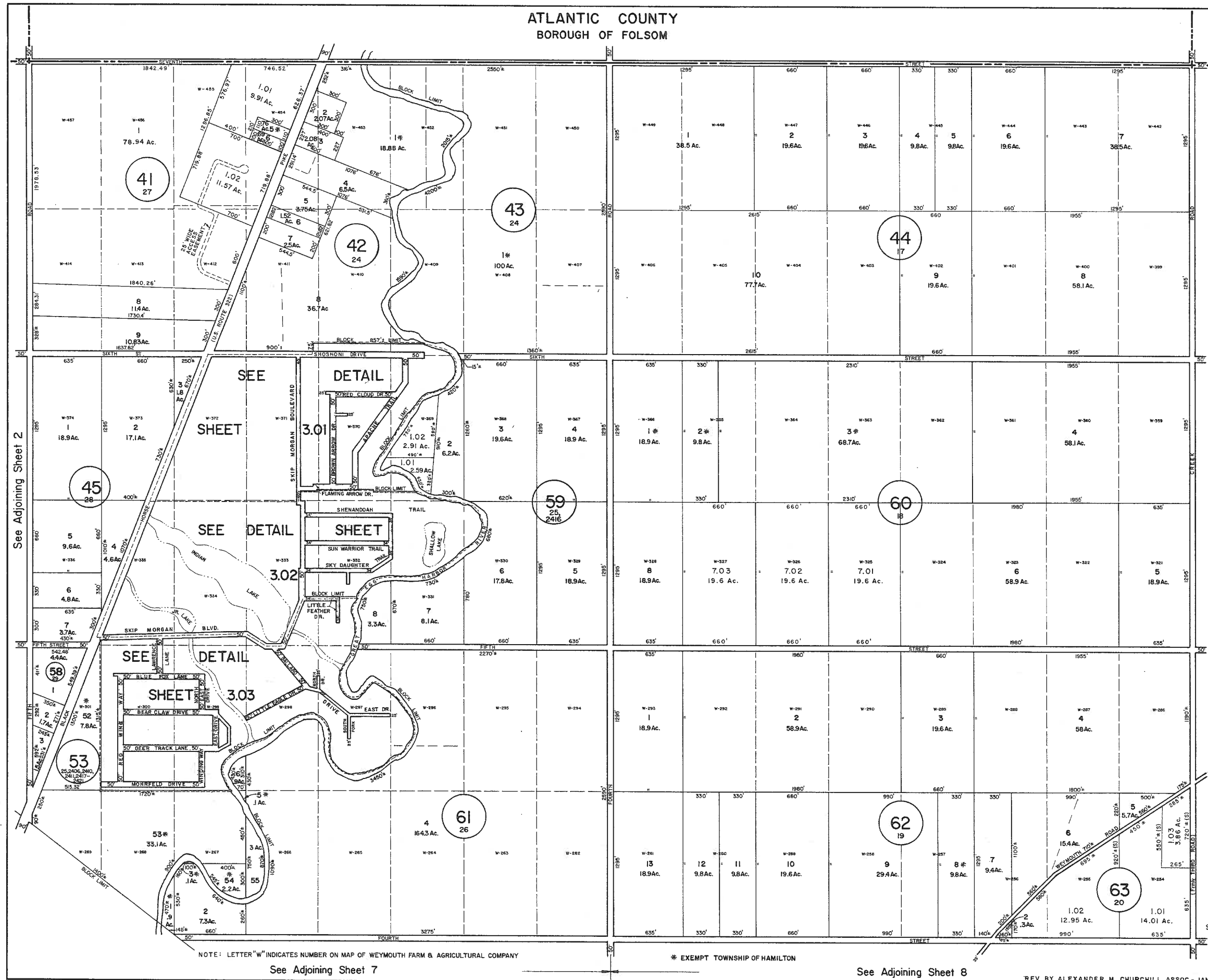


ATLANTIC COUNTY
BOROUGH OF FOLSOM

REVISIONS
WPHA 4-25-98
WPHA 11-4-98
R&V - 1-8-2013



See Adjoining Sheet 2

See Adjoining Sheet 4

* EXEMPT TOWNSHIP OF HAMILTON

NEW JERSEY DEPARTMENT OF THE TREASURY
DIVISION OF TAXATION
LOCAL PROPERTY AND PUBLIC UTILITY BRANCH
APPROVED AS A TAX MAP PURSUANT TO THE
PROVISIONS OF CHAPTER 172, LAWS OF 1983, ETC.
FOR THE DIRECTOR, DIVISION OF TAXATION

Susan J. Harty
BY P.E. & L.S.
LIC. #25434 CHIEF, ENGINEERING SECTION
JAN 22 1996 SERIAL NO. 654

WPHA 2-14-84
REVISIONS

NEW JERSEY DEPARTMENT OF THE TREASURY
DIVISION OF TAXATION
LOCAL PROPERTY AND PUBLIC UTILITY BRANCH
APPROVED AS A TAX MAP PURSUANT TO THE
PROVISIONS OF CHAPTER 172, LAWS OF 1983, ETC.
FOR THE DIRECTOR, DIVISION OF TAXATION

J. H. ...
BY P.E. & L.S.
LIC. #5096 CHIEF
DATE: MAR 18 1994 SERIAL NO. 579

TAX MAP
TOWNSHIP OF HAMILTON
ATLANTIC COUNTY, NEW JERSEY
SCALE: 1" = 400' DATE: JUNE 1, 1977

RONALD J. PRICE
PLEASANTVILLE, N.J.
N.J. LICENSE NO. 19801

NOTE: LETTER "W" INDICATES NUMBER ON MAP OF WEYMOUTH FARM & AGRICULTURAL COMPANY

See Adjoining Sheet 7

* EXEMPT TOWNSHIP OF HAMILTON

See Adjoining Sheet 8

REV. BY ALEXANDER M. CHURCHILL ASSOC. - JAN '95, FEB. 2008