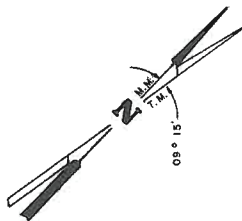
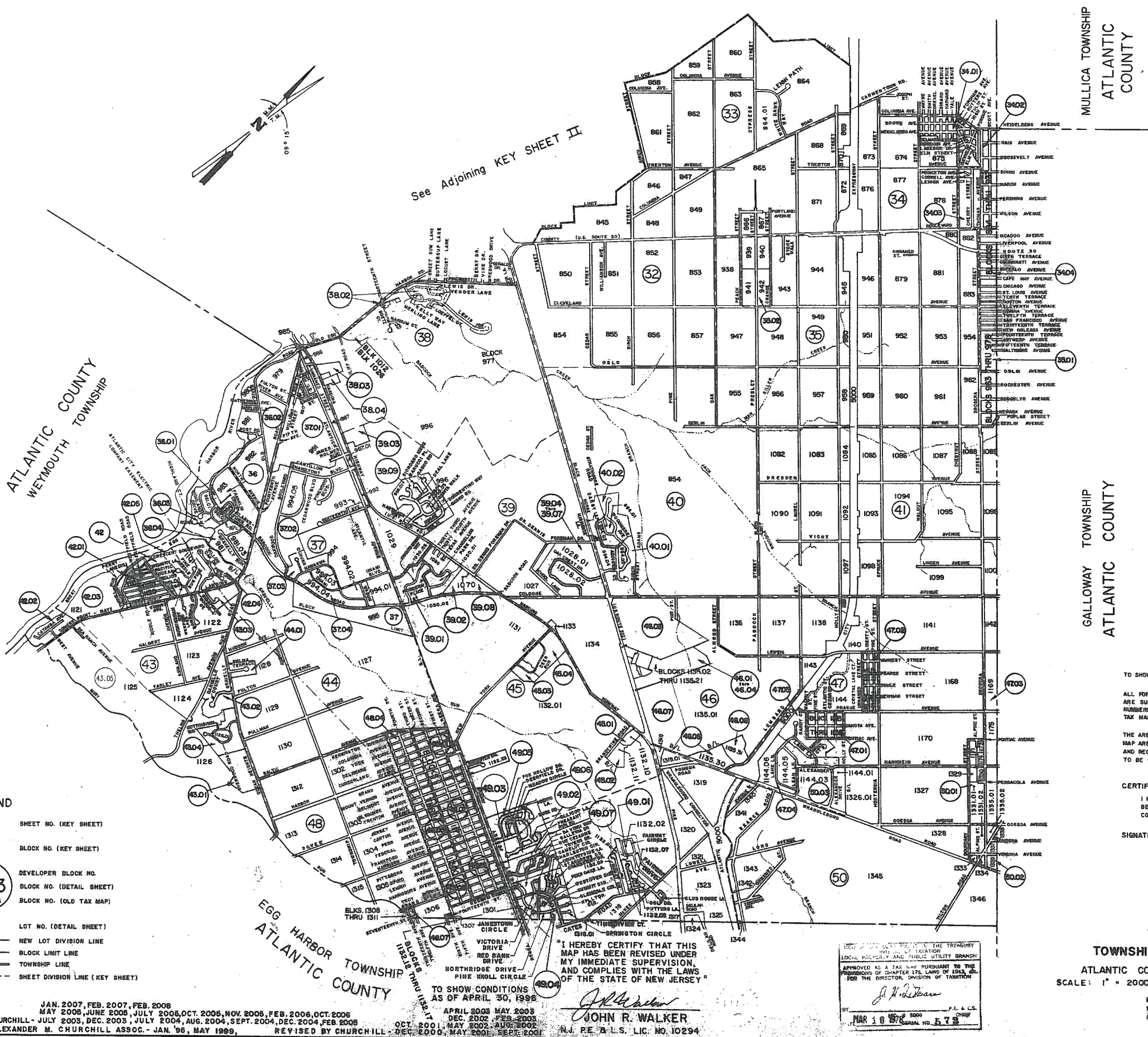


REVISIONS		
DATE	NAME	NO.
12-20-85	JOHN R. WALKER	10294
6-16-86	JOHN R. WALKER	10294
12-24-86	JOHN R. WALKER	10294
6-8-87	JOHN R. WALKER	10294
12-3-87	JOHN R. WALKER	10294
6-15-88	JOHN R. WALKER	10294
12-21-88	JOHN R. WALKER	10294
6-8-89	JOHN R. WALKER	10294
12-29-89	JOHN R. WALKER	10294
5-22-90	JOHN R. WALKER	10294
11-12-90	JOHN R. WALKER	10294
5-10-91	JOHN R. WALKER	10294
11-12-91	JOHN R. WALKER	10294
7-1-92	JOHN R. WALKER	10294
12-30-92	JOHN R. WALKER	10294
4-30-96	JOHN R. WALKER	10294
1-29-99	MARTIN F. TIRELLA	27477
11-3-08	CRAIG F. REMINGTON	23924
5-5-2011	CRAIG F. REMINGTON	23924
4-5-2012	CRAIG F. REMINGTON	23924
7-17-2014	CHARLES E. ADAMSON	42627



See Adjoining KEY SHEET II



NEW JERSEY DEPARTMENT OF THE TREASURY  
 DIVISION OF TAXATION  
 LOCAL PROPERTY AND PUBLIC UTILITY BRANCH  
 APPROVED AS A TAX MAP PURSUANT TO THE  
 PROVISIONS OF CHAPTER 175, LAWS OF 1982, ETC.  
 FOR THE DIRECTOR, DIVISION OF TAXATION  
*Richard J. Price*  
 BY: R.J.P. P.E. & L.S.  
 L.I.C. #15434 CHIEF, ENGINEERING SECTION  
 JAN 22 1996 SERIAL NO. 654

NOTES  
 TO SHOW CONDITIONS AS OF JUNE 1, 1977  
 ALL FORMER BLOCK AND LOT NUMBERS  
 ARE SUPERSEDED BY THIS MAP, FOR OLD  
 NUMBERS SEE REVISED HAMILTON TOWNSHIP  
 TAX MAP DATE JULY, 1991  
 THE AREAS, BOUNDARIES AND DIMENSIONS SHOWN ON THIS  
 MAP ARE DERIVED FROM GROUND SURVEYS, AERIAL SURVEYS  
 AND RECORDED PLANS, MAPS, DEEDS AND WILLS AND ARE  
 TO BE USED FOR ASSESSMENT PURPOSES ONLY.

CERTIFICATION  
 I HEREBY CERTIFY THAT THIS MAP AND THE SURVEY HAS  
 BEEN MADE UNDER MY IMMEDIATE SUPERVISION AND  
 COMPLIES WITH THE LAWS OF THE STATE OF NEW JERSEY.  
 SIGNATURE: *Ronald J. Price*  
 RONALD J. PRICE RE & L.S.  
 N.J. LICENSE NO. 13901

TAX MAP  
 TOWNSHIP OF HAMILTON  
 ATLANTIC COUNTY, NEW JERSEY  
 SCALE: 1" = 2000' DATE: JUNE 1, 1977

NEW JERSEY DEPARTMENT OF THE TREASURY  
 DIVISION OF TAXATION  
 LOCAL PROPERTY AND PUBLIC UTILITY BRANCH  
 APPROVED AS A TAX MAP PURSUANT TO THE  
 PROVISIONS OF CHAPTER 175, LAWS OF 1982, ETC.  
 FOR THE DIRECTOR, DIVISION OF TAXATION  
*Richard J. Price*  
 BY: R.J.P. P.E. & L.S.  
 L.I.C. #15434 CHIEF, ENGINEERING SECTION  
 MAR 16 1976 SERIAL NO. 573

"I HEREBY CERTIFY THAT THIS  
 MAP HAS BEEN REVISED UNDER  
 MY IMMEDIATE SUPERVISION,  
 AND COMPLIES WITH THE LAWS  
 OF THE STATE OF NEW JERSEY."  
*John R. Walker*  
 JOHN R. WALKER  
 N.J. P.E. & L.S. LIC. NO. 10294

- LEGEND
- (7) SHEET NO. (KEY SHEET)
  - 5000 BLOCK NO. (KEY SHEET)
  - (78) DEVELOPER BLOCK NO.
  - (203) BLOCK NO. (DETAIL SHEET)
  - (296A) BLOCK NO. (OLD TAX MAP)
  - 2 LOT NO. (DETAIL SHEET)
  - NEW LOT DIVISION LINE
  - BLOCK LIMIT LINE
  - TOWNSHIP LINE
  - SHEET DIVISION LINE (KEY SHEET)

REVISIONS
JUNE 1985
DECEMBER 1984
JUNE 1984
DECEMBER 1983
JUNE 1983
DECEMBER 1982
DECEMBER 1981
DECEMBER 1980
DECEMBER 1979
DECEMBER 1978
APRIL 1978

JAN. 2007, FEB. 2007, FEB. 2008  
 MAY 2008, JUNE 2008, JULY 2008, OCT. 2008, NOV. 2008, FEB. 2009, OCT. 2009  
 REV. BY CHURCHILL - JULY 2003, DEC. 2003, JULY 2004, AUG. 2004, SEPT. 2004, DEC. 2004, FEB. 2005  
 REV. BY ALEXANDER M. CHURCHILL ASSOC. - JAN. '96, MAY 1999, REVISED BY CHURCHILL - DEC. 2000, MAY 2001, SEPT. 2001  
 APRIL 2008, MAY 2008, DEC. 2002, FEB. 2003  
 OCT. 2001, MAY 2002, AUG. 2002

REV. BY RBV ENG. - AUGUST, 2008 - 01121019