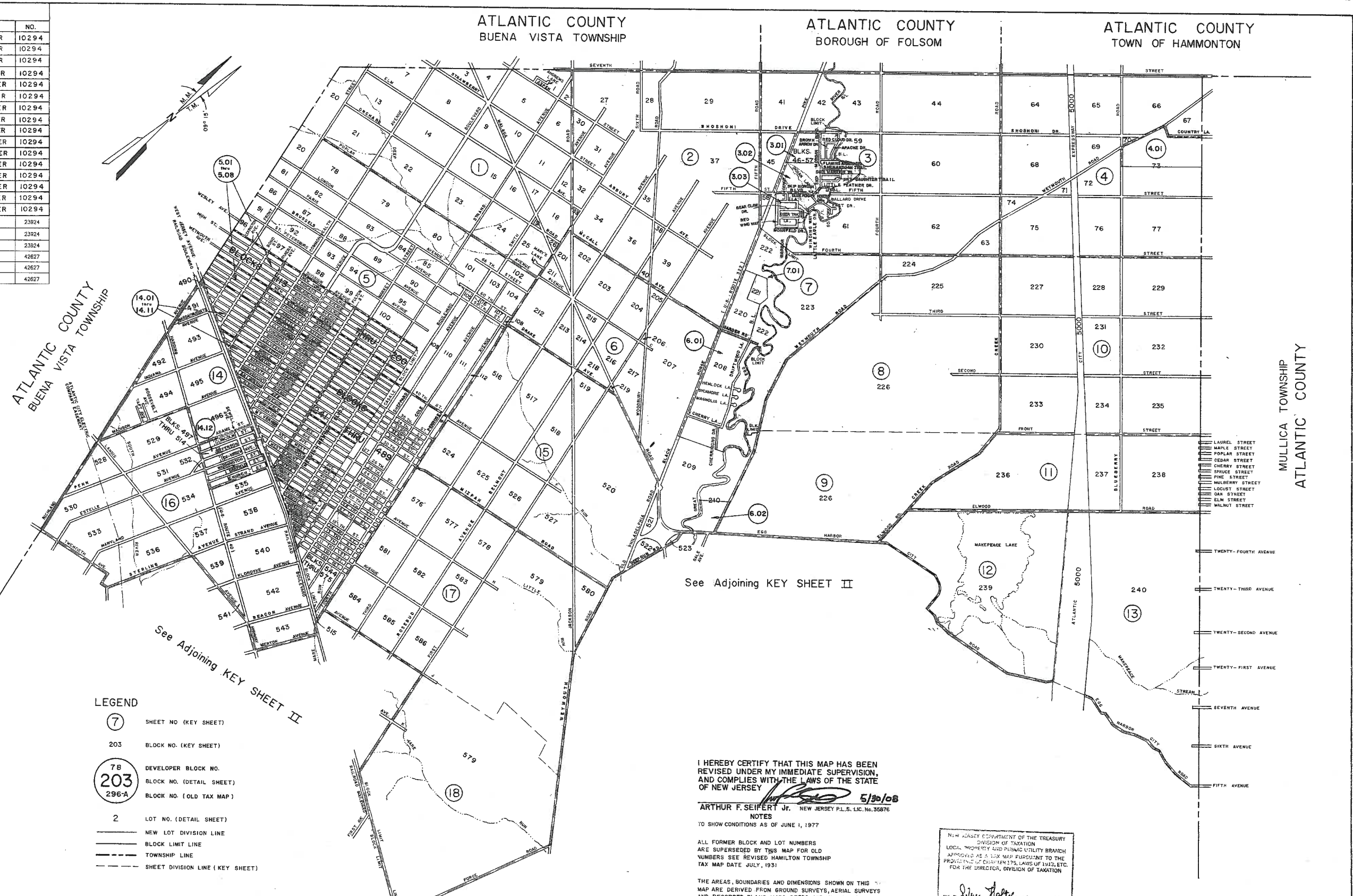


REVISIONS		
DATE	NAME	NO.
12-20-85	JOHN R. WALKER	10294
6-16-86	JOHN R. WALKER	10294
12-24-86	JOHN R. WALKER	10294
6-8-87	JOHN R. WALKER	10294
12-3-87	JOHN R. WALKER	10294
6-15-88	JOHN R. WALKER	10294
12-21-88	JOHN R. WALKER	10294
6-8-89	JOHN R. WALKER	10294
12-29-89	JOHN R. WALKER	10294
5-22-90	JOHN R. WALKER	10294
11-12-90	JOHN R. WALKER	10294
5-10-91	JOHN R. WALKER	10294
11-12-91	JOHN R. WALKER	10294
7-1-92	JOHN R. WALKER	10294
12-30-92	JOHN R. WALKER	10294
4-30-96	JOHN R. WALKER	10294
1-10-2010	CRAG F. REMINGTON	23924
1-10-2011	CRAG F. REMINGTON	23924
1-10-2012	CRAG F. REMINGTON	23924
1-8-2013	CHARLES E. ADAMSON	42627
1-2-2014	CHARLES E. ADAMSON	42627
1-13-2015	CHARLES E. ADAMSON	42627



REVISIONS		
DATE	NAME	NO.
JUNE 1985		
DECEMBER 1984		
JUNE 1984		
DECEMBER 1983		
JUNE 1983		
DECEMBER 1982		
DECEMBER 1981		
DECEMBER 1980		
DECEMBER 1979		
DECEMBER 1978		
APRIL 1978		

- LEGEND**
- ⑦ SHEET NO. (KEY SHEET)
  - 203 BLOCK NO. (KEY SHEET)
  - 78 DEVELOPER BLOCK NO.
  - 203 BLOCK NO. (DETAIL SHEET)
  - 296-A BLOCK NO. (OLD TAX MAP)
  - 2 LOT NO. (DETAIL SHEET)
  - NEW LOT DIVISION LINE
  - BLOCK LIMIT LINE
  - TOWNSHIP LINE
  - SHEET DIVISION LINE (KEY SHEET)

TO SHOW CONDITIONS AS OF APRIL 30, 1996

I HEREBY CERTIFY THAT THIS MAP HAS BEEN REVISED UNDER MY IMMEDIATE SUPERVISION, AND COMPLIES WITH THE LAWS OF THE STATE OF NEW JERSEY

*John R. Walker*  
**JOHN R. WALKER**  
 N.J. P.E. & L.S. LIC. NO. 10294

NEW JERSEY DEPARTMENT OF THE TREASURY  
 DIVISION OF TAXATION  
 LOCAL PROPERTY AND PUBLIC UTILITY BRANCH  
 APPROVED AS A TAX MAP PURSUANT TO THE PROVISIONS OF CHAPTER 175, LAWS OF 1913, ETC. FOR THE DIRECTOR, DIVISION OF TAXATION

*J. H. Starnes*  
 J. H. STARNES  
 N.J. P.E. & L.S. LIC. NO. 578

I HEREBY CERTIFY THAT THIS MAP HAS BEEN REVISED UNDER MY IMMEDIATE SUPERVISION, AND COMPLIES WITH THE LAWS OF THE STATE OF NEW JERSEY

*Arthur F. Seifert Jr.*  
**ARTHUR F. SEIFERT JR.**  
 NEW JERSEY P.L.S. LIC. NO. 35876

NOTES  
 TO SHOW CONDITIONS AS OF JUNE 1, 1977

ALL FORMER BLOCK AND LOT NUMBERS ARE SUPERSEDED BY THIS MAP FOR OLD NUMBERS SEE REVISED HAMILTON TOWNSHIP TAX MAP DATE JULY, 1931

THE AREAS, BOUNDARIES AND DIMENSIONS SHOWN ON THIS MAP ARE DERIVED FROM GROUND SURVEYS, AERIAL SURVEYS AND RECORDED PLANS, MAPS, DEEDS AND WILLS AND ARE TO BE USED FOR ASSESSMENT PURPOSES ONLY.

**CERTIFICATION**

I HEREBY CERTIFY THAT THIS MAP AND THE SURVEY HAS BEEN MADE UNDER MY IMMEDIATE SUPERVISION AND COMPLIES WITH THE LAWS OF THE STATE OF NEW JERSEY.

*Ronald J. Price*  
**RONALD J. PRICE**  
 N.J. LICENSE NO. 13901

NEW JERSEY DEPARTMENT OF THE TREASURY  
 DIVISION OF TAXATION  
 LOCAL PROPERTY AND PUBLIC UTILITY BRANCH  
 APPROVED AS A TAX MAP PURSUANT TO THE PROVISIONS OF CHAPTER 175, LAWS OF 1913, ETC. FOR THE DIRECTOR, DIVISION OF TAXATION

*Walter Hallock*  
 WALTER HALLOCK  
 N.J. P.E. & L.S. LIC. NO. 854

**TAX MAP**  
**TOWNSHIP OF HAMILTON**  
 ATLANTIC COUNTY, NEW JERSEY  
 SCALE: 1" = 2000' DATE: JUNE 1, 1977

RONALD J. PRICE  
 PLEASANTVILLE, N.J.  
 N.J. LICENSE NO. 13901

TO SHOW CONDITIONS AS OF JANUARY 13, 2015

REV. BY REV. ENG. - AUGUST 2008 - 01121019

REV. BY ALEXANDER M. CHURCHILL ASSOC. - JAN. '96, MAR. '95

REV. BY CHURCHILL, DEC. 2000, DEC. 2001, JULY 2003, APRIL 2004, JULY 2004, DEC 2004, MAR. 2005, JUNE 2005, NOV. 2006