

See Adjoining Sheet 8

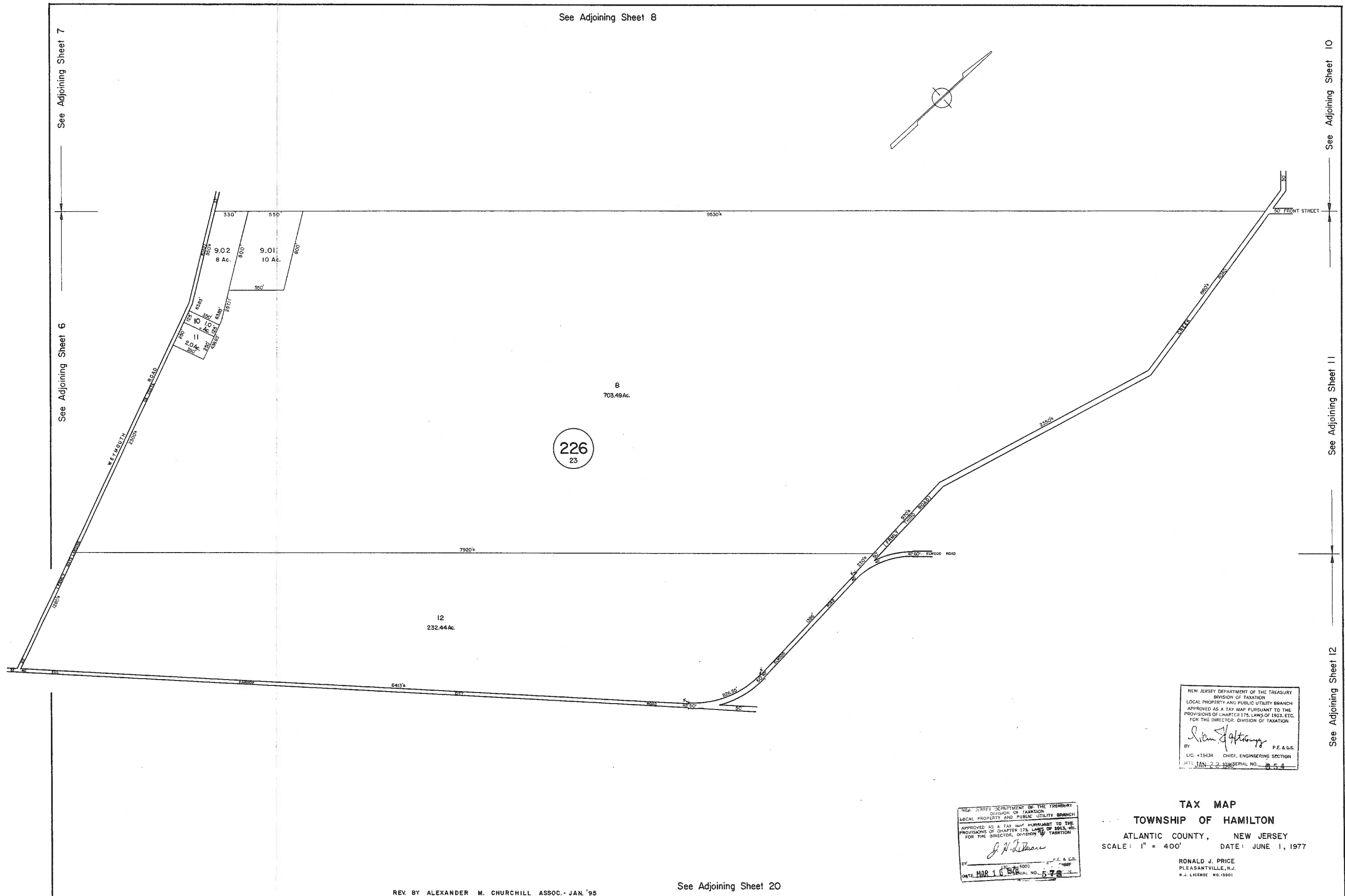
See Adjoining Sheet 7

See Adjoining Sheet 6

See Adjoining Sheet 10

See Adjoining Sheet 11

See Adjoining Sheet 12



226
23

8
703.49 Ac.

12
232.44 Ac.

NEW JERSEY DEPARTMENT OF THE TREASURY
 DIVISION OF TAXATION
 LOCAL PROPERTY AND PUBLIC UTILITY BRANCH
 APPROVED AS A TAX MAP PURSUANT TO THE
 PROVISIONS OF CHAPTER 175, LAWS OF 1913, ETC.
 FOR THE DIRECTOR, DIVISION OF TAXATION

John H. Johnson
 BY LIC. #15434 P.E. & L.S.
 CHIEF, ENGINEERING SECTION
 DATE JAN 22 1977 SERIAL NO. 854

NEW JERSEY DEPARTMENT OF THE TREASURY
 DIVISION OF TAXATION
 LOCAL PROPERTY AND PUBLIC UTILITY BRANCH
 APPROVED AS A TAX MAP PURSUANT TO THE
 PROVISIONS OF CHAPTER 175, LAWS OF 1913, ETC.
 FOR THE DIRECTOR, DIVISION OF TAXATION

J. H. Johnson
 BY LIC. #15434 P.E. & L.S.
 CHIEF, ENGINEERING SECTION
 DATE MAR 16 1977 SERIAL NO. 578

TAX MAP
TOWNSHIP OF HAMILTON
 ATLANTIC COUNTY, NEW JERSEY
 SCALE: 1" = 400' DATE: JUNE 1, 1977

RONALD J. PRICE
 PLEASANTVILLE, N.J.
 N.J. LICENSE NO. 15901