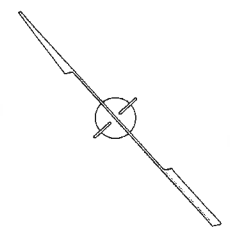
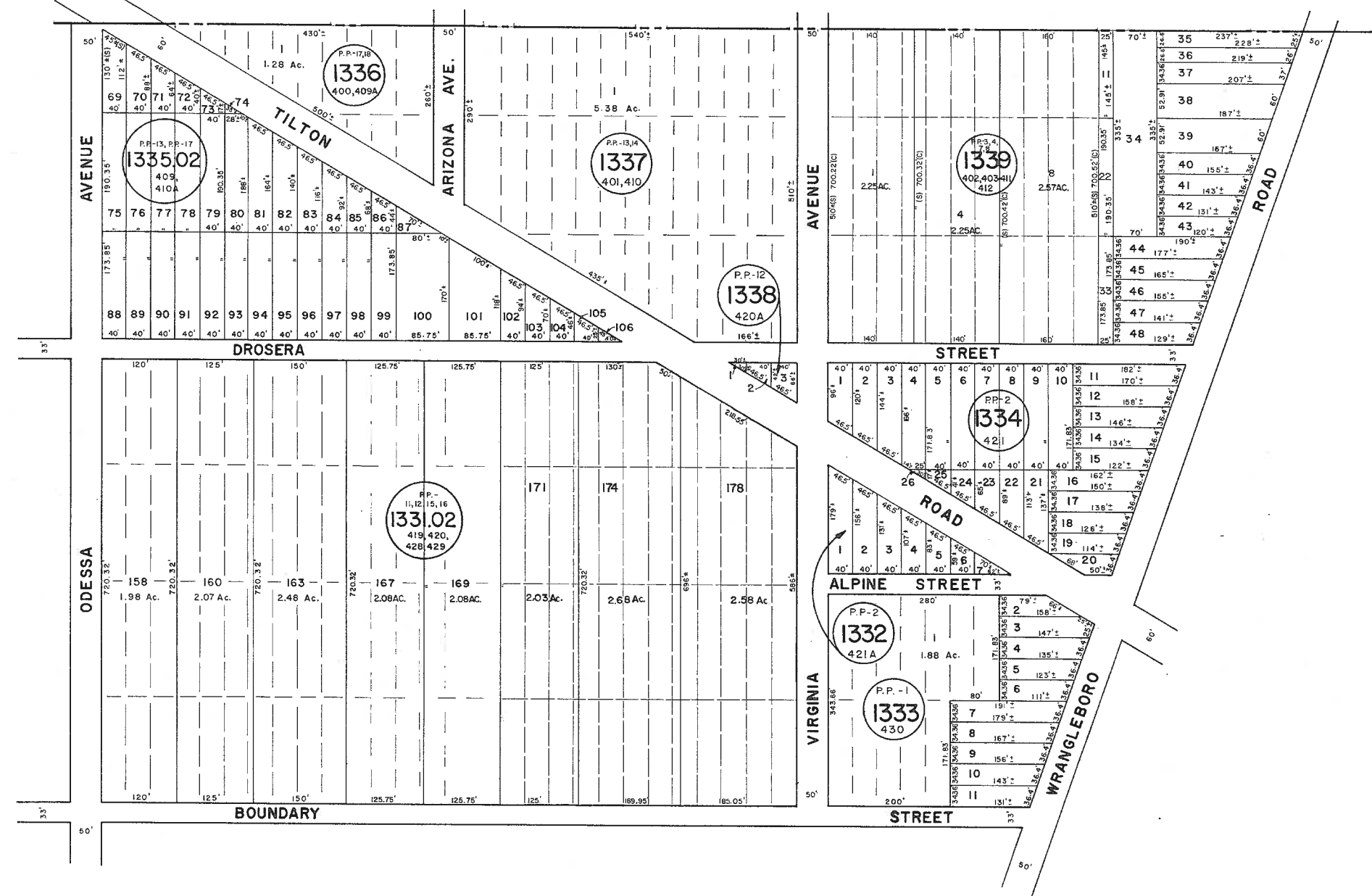


ATLANTIC COUNTY
GALLOWAY TOWNSHIP



See Adjoining Sheet 50.01



See Adjoining Sheet 50

NOTE: LETTERS "P.P." INDICATE BLOCKS ON MAP OF POMONA BY POMONA LAND CO.

NEW JERSEY DEPARTMENT OF THE TREASURY
DIVISION OF TAXATION
LOCAL PROPERTY AND PUBLIC UTILITY BRANCH
APPROVED AS A TAX MAP PURSUANT TO THE
PROVISIONS OF CHAPTER 175, LAWS OF 1913, ETC.
FOR THE DIRECTOR, DIVISION OF TAXATION
John J. Hartung
BY: P.E. & L.S.
LIC. #15434 CHIEF, ENGINEERING SECTION
DATE: JAN 22 1986 SERIAL NO. 854

NEW JERSEY DEPARTMENT OF THE TREASURY
DIVISION OF TAXATION
LOCAL PROPERTY AND PUBLIC UTILITY BRANCH
APPROVED AS A TAX MAP PURSUANT TO THE
PROVISIONS OF CHAPTER 175, LAWS OF 1913, ETC.
FOR THE CHIEF, DIVISION OF TAXATION
Ronald J. Price
BY: P.E. & L.S.
DATE: MAR 16 1977 SERIAL NO. 578

TAX MAP
TOWNSHIP OF HAMILTON
ATLANTIC COUNTY, NEW JERSEY
SCALE: 1" = 100' DATE: JUNE 1, 1977
RONALD J. PRICE
PLEASANTVILLE, N.J.
N.J. LICENSE NO. 15901

See Adjoining Sheet 50

REVISED BY CHURCHILL: FEB. 2008