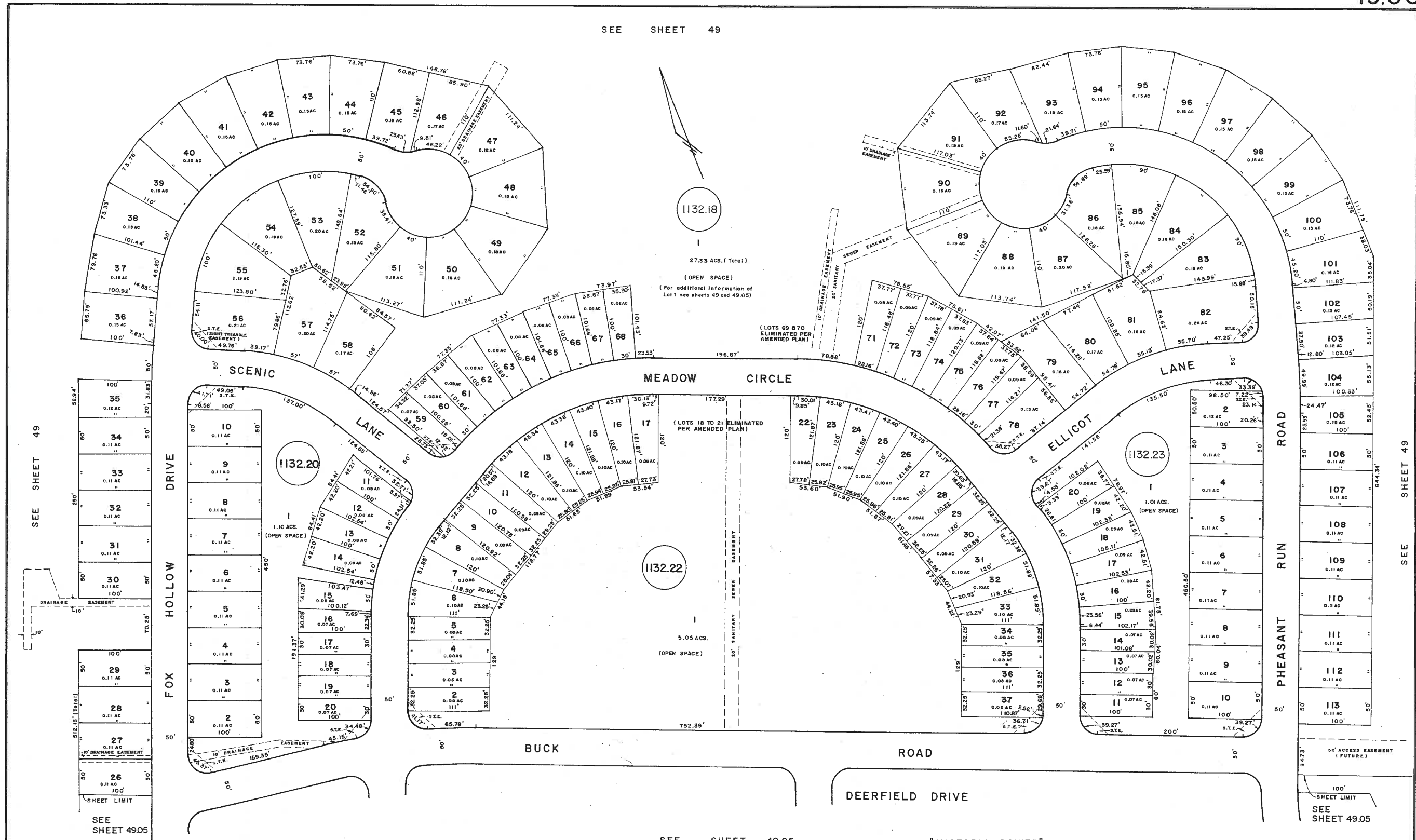


SEE SHEET 49



SEE SHEET 49

SEE SHEET 49.05

SEE SHEET 49.05

"VICTORIA POINTE"
(formerly 'DEERFIELD')

TAX MAP
 TOWNSHIP OF HAMILTON
 ATLANTIC COUNTY NEW JERSEY
 SCALE: 1" = 60' AUG. 2004
 ANDREW E. COURSEN, L.S.
 NO. 37183
CHURCHILL CONSULTING ENGINEERS
 344 N. ROUTE 73, BERLIN, N.J. 08009

REVISED BY REMINGTON & VERNICK ENGINEERS - 4-2012
REVISED BY CHURCHILL - MAY 2005

SEE SHEET 49

SEE SHEET 49.05