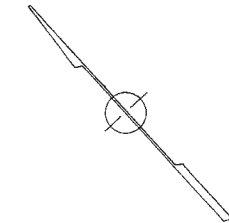
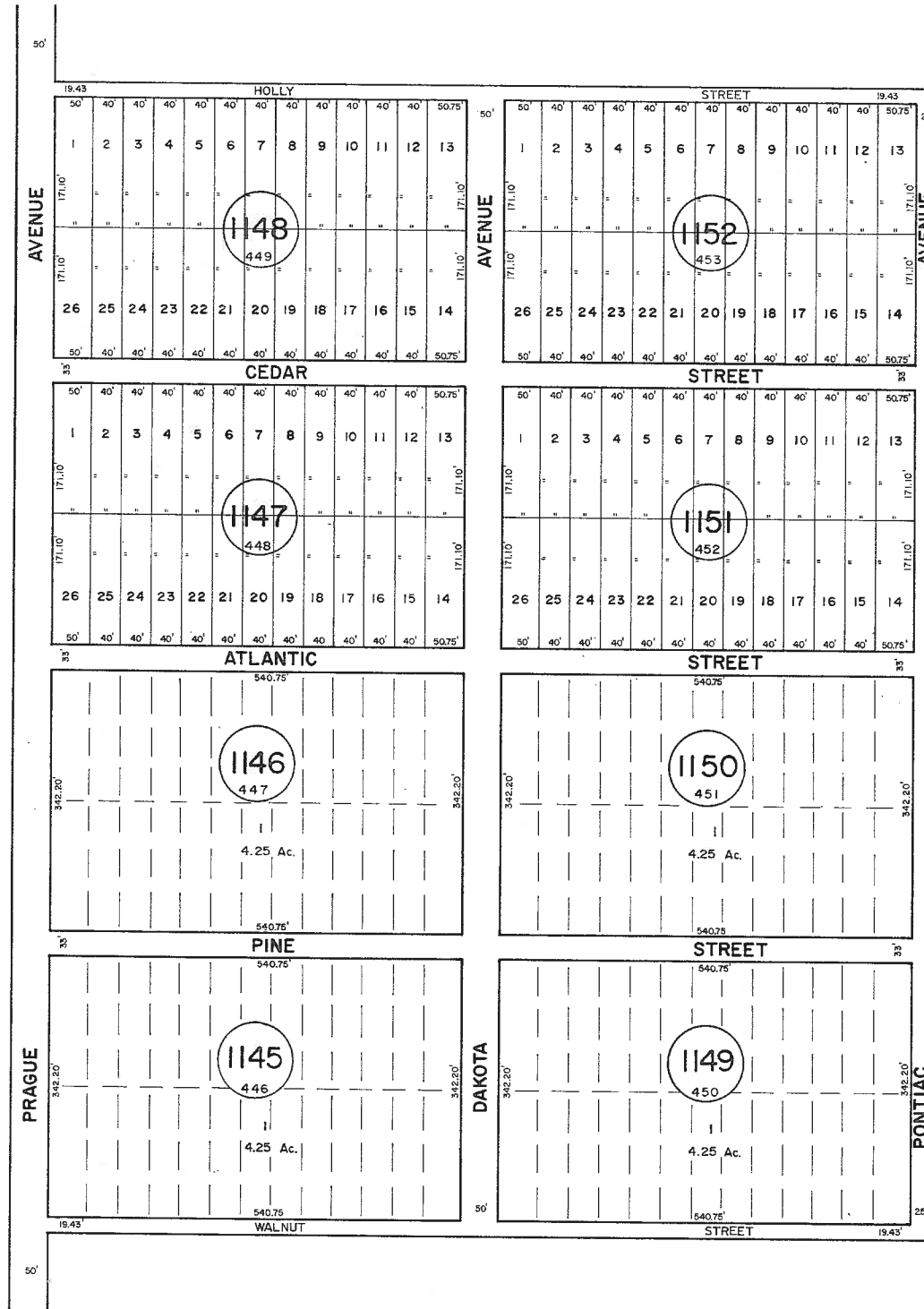


See Adjoining Sheet 47

See Adjoining Sheet 47

See Adjoining Sheet 47



NEW JERSEY DEPARTMENT OF THE TREASURY  
 DIVISION OF TAXATION  
 LOCAL PROPERTY AND PUBLIC UTILITY BRANCH  
 APPROVED AS A TAX MAP PURSUANT TO THE  
 PROVISIONS OF CHAPTER 175, LAWS OF 1913, ETC.  
 FOR THE DIRECTOR, DIVISION OF TAXATION

*J. H. Johnson*  
 BY LIC. #15434 CHIEF, ENGINEERING SECTION  
 JAN 22 1986 SERIAL NO. 054

NEW JERSEY DEPARTMENT OF THE TREASURY  
 DIVISION OF TAXATION  
 LOCAL PROPERTY AND PUBLIC UTILITY BRANCH  
 APPROVED AS A TAX MAP PURSUANT TO THE  
 PROVISIONS OF CHAPTER 175, LAWS OF 1913, ETC.  
 FOR THE DIRECTOR, DIVISION OF TAXATION

*J. H. Johnson*  
 BY LIC. # 5009 P.E. & L.S.  
 MAR 16 1986 SERIAL NO. 5784

**TAX MAP**  
**TOWNSHIP OF HAMILTON**  
 ATLANTIC COUNTY, NEW JERSEY  
 SCALE: 1" = 100' DATE: JUNE 1, 1977

RONALD J. PRICE  
 PLEASANTVILLE, N.J.  
 N.J. LICENSE NO. 13901

See Adjoining Sheet 47