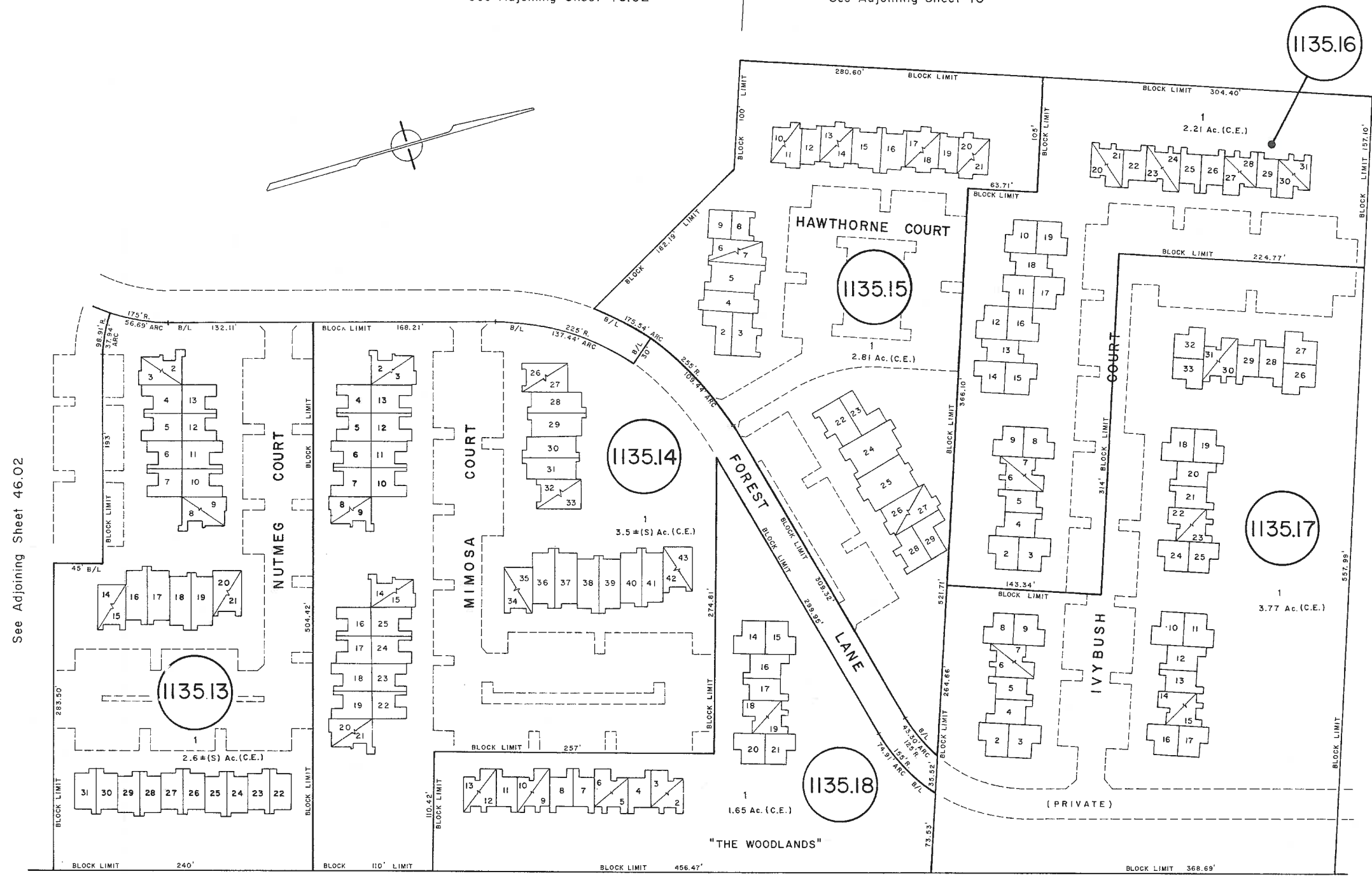


See Adjoining Sheet 46.02

See Adjoining Sheet 46



See Adjoining Sheet 46.02

See Adjoining Sheet 46.04

PRIVATE ROAD (UN-NAMED)

See Adjoining Sheet 46

NOTE:  
 HIGHER NUMBER = UPPER FLOOR  
 LOWER NUMBER = LOWER FLOOR

SEE CONDO INDEX I FOR AREA DATA

NEW JERSEY DEPARTMENT OF THE TREASURY  
 DIVISION OF TAXATION  
 LOCAL PROPERTY AND PUBLIC UTILITY BRANCH  
 APPROVED AS A TAX MAP PURSUANT TO THE  
 PROVISIONS OF CHAPTER 175, LAWS OF 1913, ETC.  
 FOR THE DIRECTOR, DIVISION OF TAXATION

*John R. Walker*  
 BY: P.E. & L.S.  
 L.I.C. #15434 CHIEF, ENGINEERING SECTION  
 DATE: JAN 22 1988 SERIAL NO. 654

TAX MAP  
 TOWNSHIP OF HAMILTON  
 ATLANTIC COUNTY, NEW JERSEY  
 SCALE: 1" = 50'  
 OCTOBER 1, 1984

JOHN R. WALKER  
 OCEAN CITY, N.J.  
 N.J. LICENSE NO. 10294