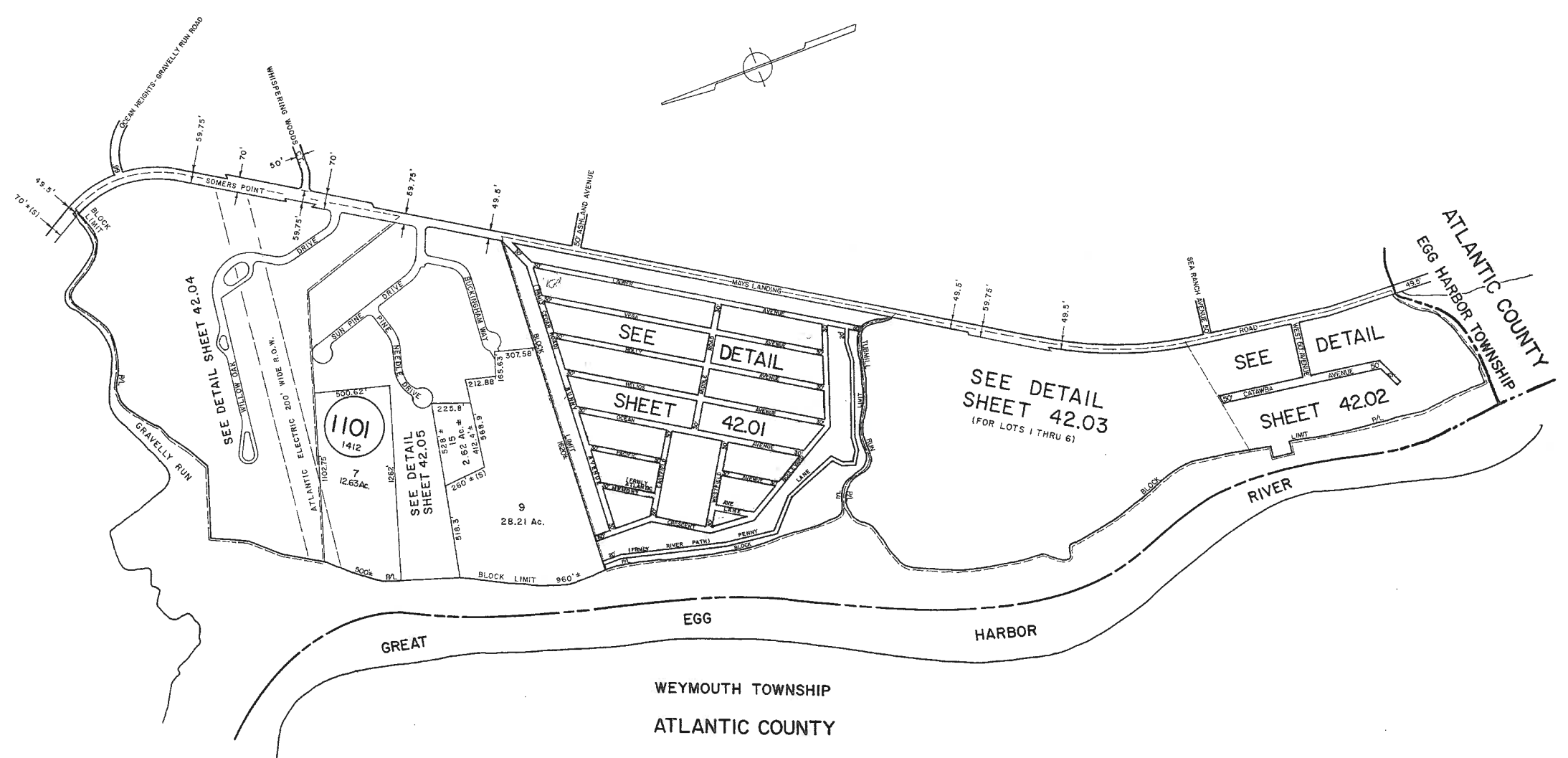


REVISIONS  
 WPHA 7-14-89  
 WPHA 1-15-92  
 WPHA 1-9-97

See Adjoining Sheet 43

See Adjoining Sheet 44

See Adjoining Sheet 36.04



NEW JERSEY DEPARTMENT OF THE TREASURY  
 DIVISION OF TAXATION  
 LOCAL PROPERTY AND PUBLIC UTILITY BRANCH  
 APPROVED AS A TAX MAP PURSUANT TO THE  
 PROVISIONS OF CHAPTER 175, LAWS OF 1963, ETC.  
 FOR THE DIRECTOR, DIVISION OF TAXATION

BY *Alexander M. Churchill* P.E. & L.S.  
 LIC. #15434 CHIEF, ENGINEERING SECTION  
 DATE: JAN 22 1986 SERIAL NO. 654

NEW JERSEY DEPARTMENT OF THE TREASURY  
 DIVISION OF TAXATION  
 LOCAL PROPERTY AND PUBLIC UTILITY BRANCH  
 APPROVED AS A TAX MAP PURSUANT TO THE  
 PROVISIONS OF CHAPTER 175, LAWS OF 1963, ETC.  
 FOR THE DIRECTOR, DIVISION OF TAXATION

BY *Ronald J. Price* P.E. & L.S.  
 LIC. # 5009 CHIEF  
 DATE: MAR 18 1977 SERIAL NO. 523

TAX MAP  
 TOWNSHIP OF HAMILTON  
 ATLANTIC COUNTY, NEW JERSEY  
 SCALE 1" = 400' DATE: JUNE 1, 1977

RONALD J. PRICE  
 PLEASANTVILLE, N.J.  
 N.J. LICENSE NO. 13901

REV BY ALEXANDER M. CHURCHILL ASSOC. - JAN '95, FEB. 2008

WPHA 9-23-85  
 WPTH 8-10-83  
 WPTH-DEC-1981  
 REVISIONS