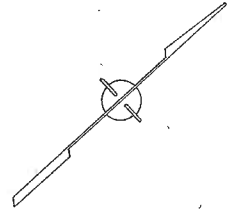
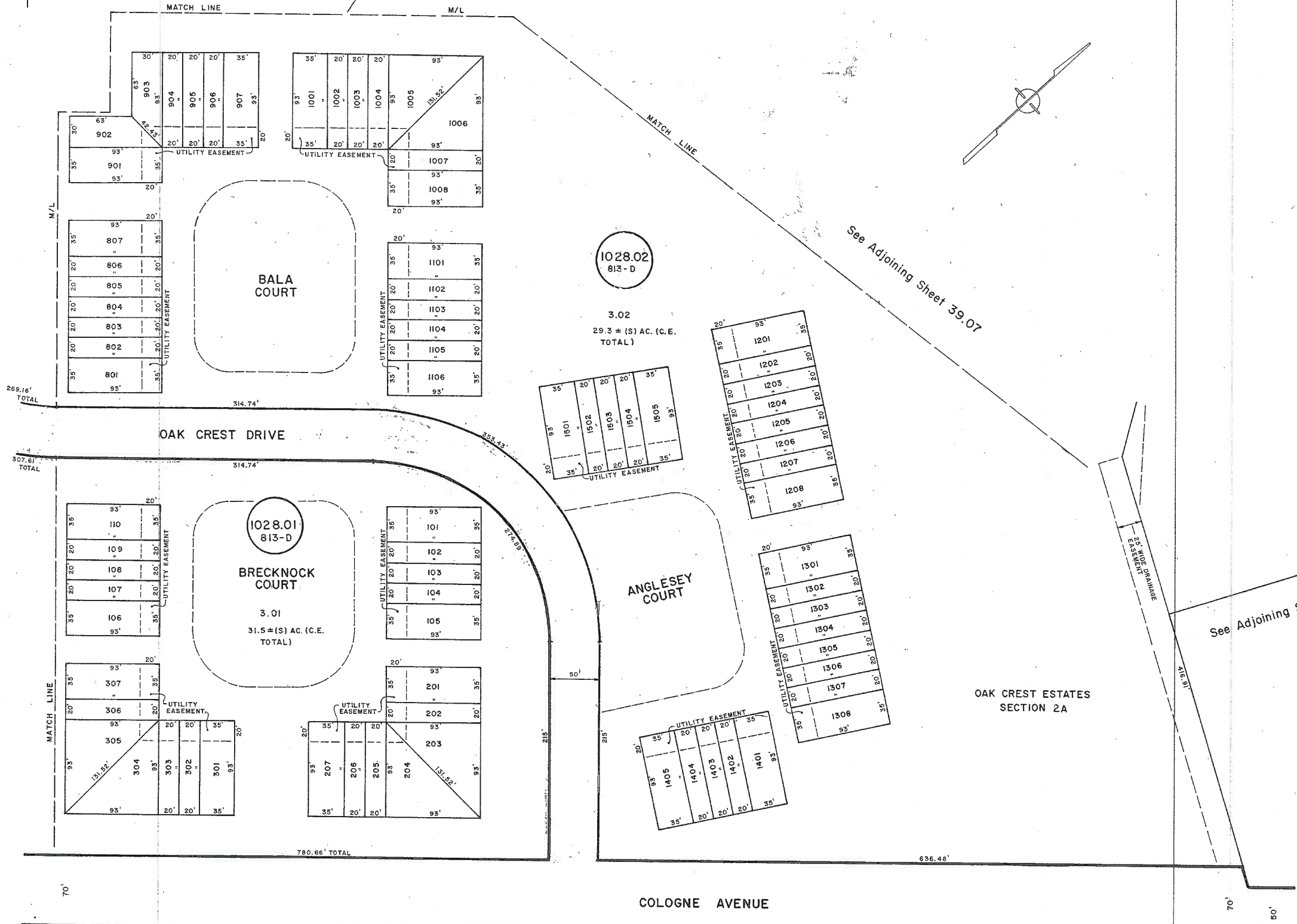


REVISIONS
WPHA 12-5-96

See Adjoining Sheet 39.06 See Adjoining Sheet 39.07

See Adjoining Sheet 39.04



NEW JERSEY DEPARTMENT OF THE TREASURY
DIVISION OF TAXATION
LOCAL PROPERTY AND PUBLIC UTILITY BRANCH
APPROVED AS A TAX MAP PURSUANT TO THE
PROVISIONS OF CHAPTER 175, LAWS OF 1923, ETC.
FOR THE DIRECTOR, DIVISION OF TAXATION

BY: *John R. Walker* P.E. & L.S.
LIC. 12519 CHIEF, ENGINEERING SECTION
DATE: JAN 22 1986 SERIAL NO. 854

TAX MAP
TOWNSHIP OF HAMILTON
ATLANTIC COUNTY, NEW JERSEY
SCALE: 1" = 50'
MARCH 8, 1984

JOHN R. WALKER
OCEAN CITY, N. J.
N.J. LICENSE NO. 10294

(BLOCK 1028.02 LOT 3.10 Eliminated)
See Adjoining Sheet 46

REV. BY CHURCHILL - JAN. 2007

WPHA 12-5-85
REVISIONS