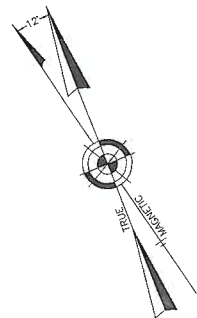
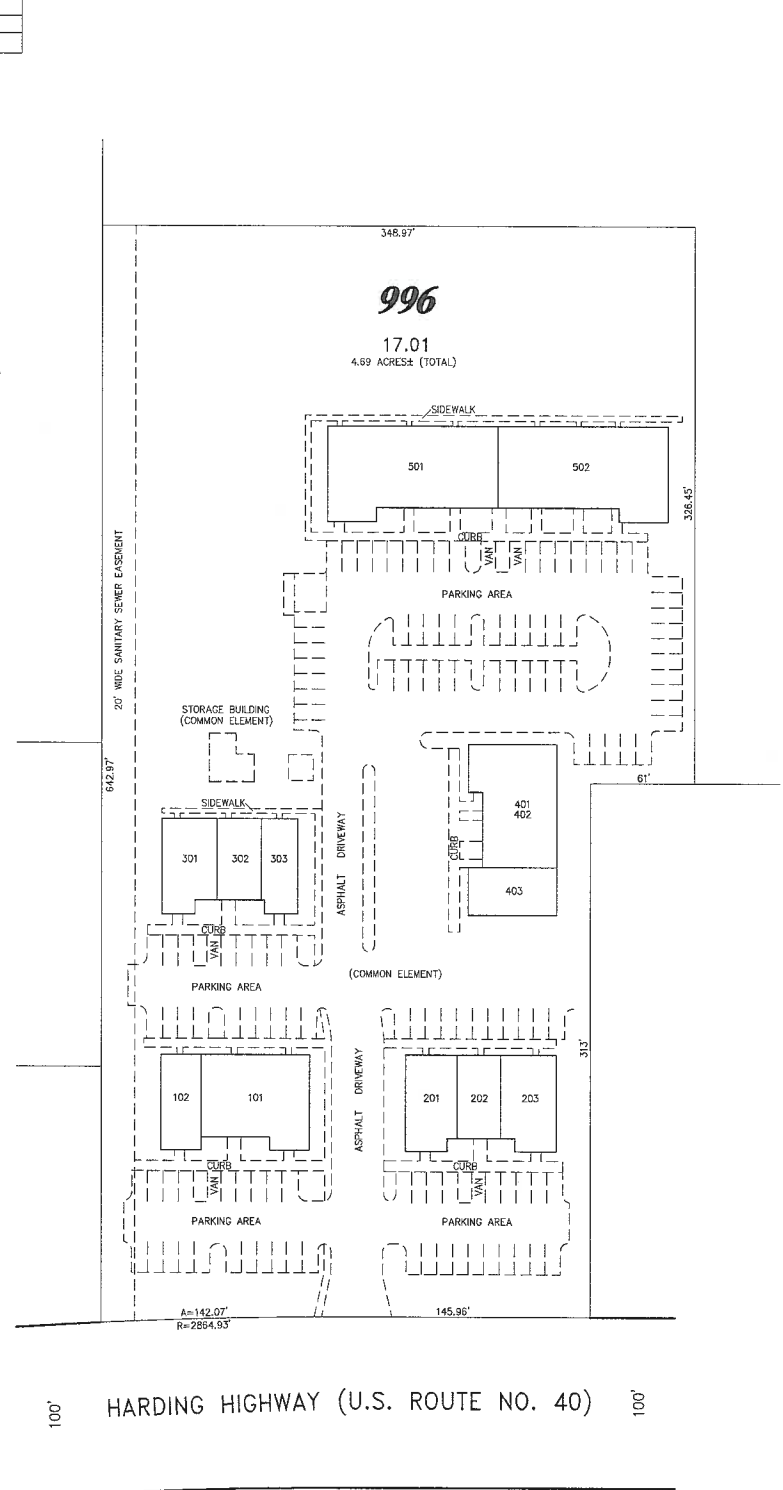


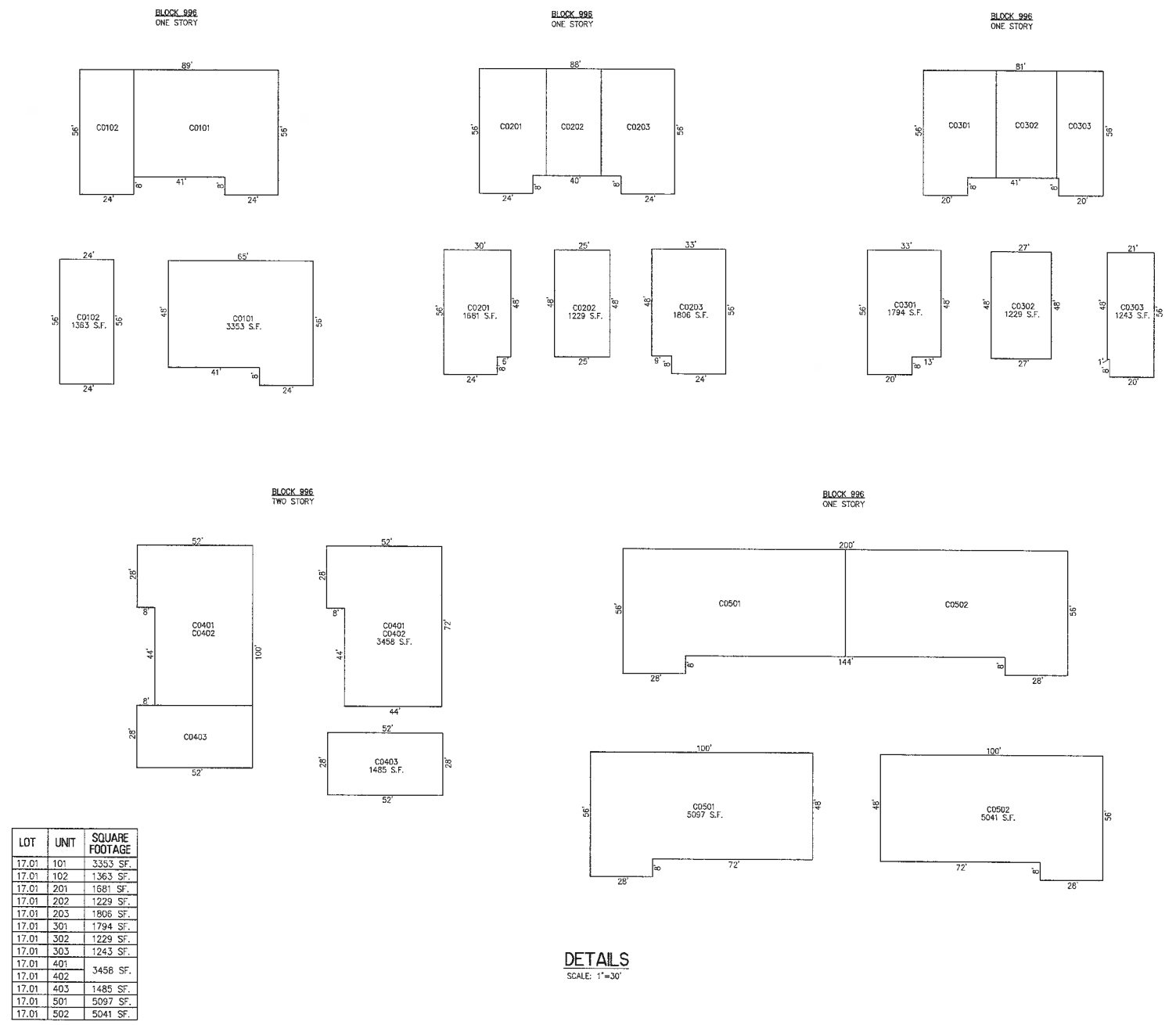
REVISIONS		
10-10-2008	CRAIG F. REMINGTON	23924



**NOTE:**  
 1. THIS SHEET HAS BEEN DRAWN USING COMPUTER AIDED DRAFTING/DESIGN (CAD/D) AND COORDINATE GEOMETRY (GOCO).  
 2. DIMENSIONS AND SQUARE FOOTAGE ARE TYPICAL FOR ALL SIMILAR UNITS.  
 3. ALL CONDOMINIUM UNIT SQUARE FOOTAGE AREAS AND DIMENSIONS REFLECT FIELD MEASUREMENTS.

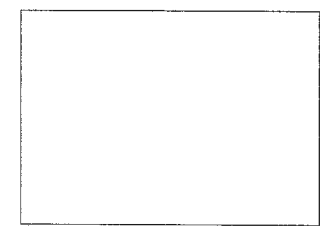



**PLAN**  
SCALE: 1"=50'



**DETAILS**  
SCALE: 1"=30'

**BLOCK 996, LOT 17.01**  
**INSET "A"**  
 CONDOMINIUM DETAILS AND DIMENSIONS  
 BLOCK 996, LOT 17.01  
 SEE PLATE 38



**TAX MAP**  
**TOWNSHIP OF HAMILTON**  
 ATLANTIC COUNTY NEW JERSEY  
 SCALE: 1" = 50' DATE: 10-10-2008  
**CRAIG F. REMINGTON LAND SURVEYOR LIC. NO. 23924**  
 **REMINGTON, VERNICK & WALBERG ENGINEERS**  
24 GA 28048700  
 645 N. MAIN STREET, PLEASANTVILLE, NJ 08232  
 (609) 645-7100 FAX (609) 645-7076  
 WEB SITE ADDRESS: WWW.RVW.COM