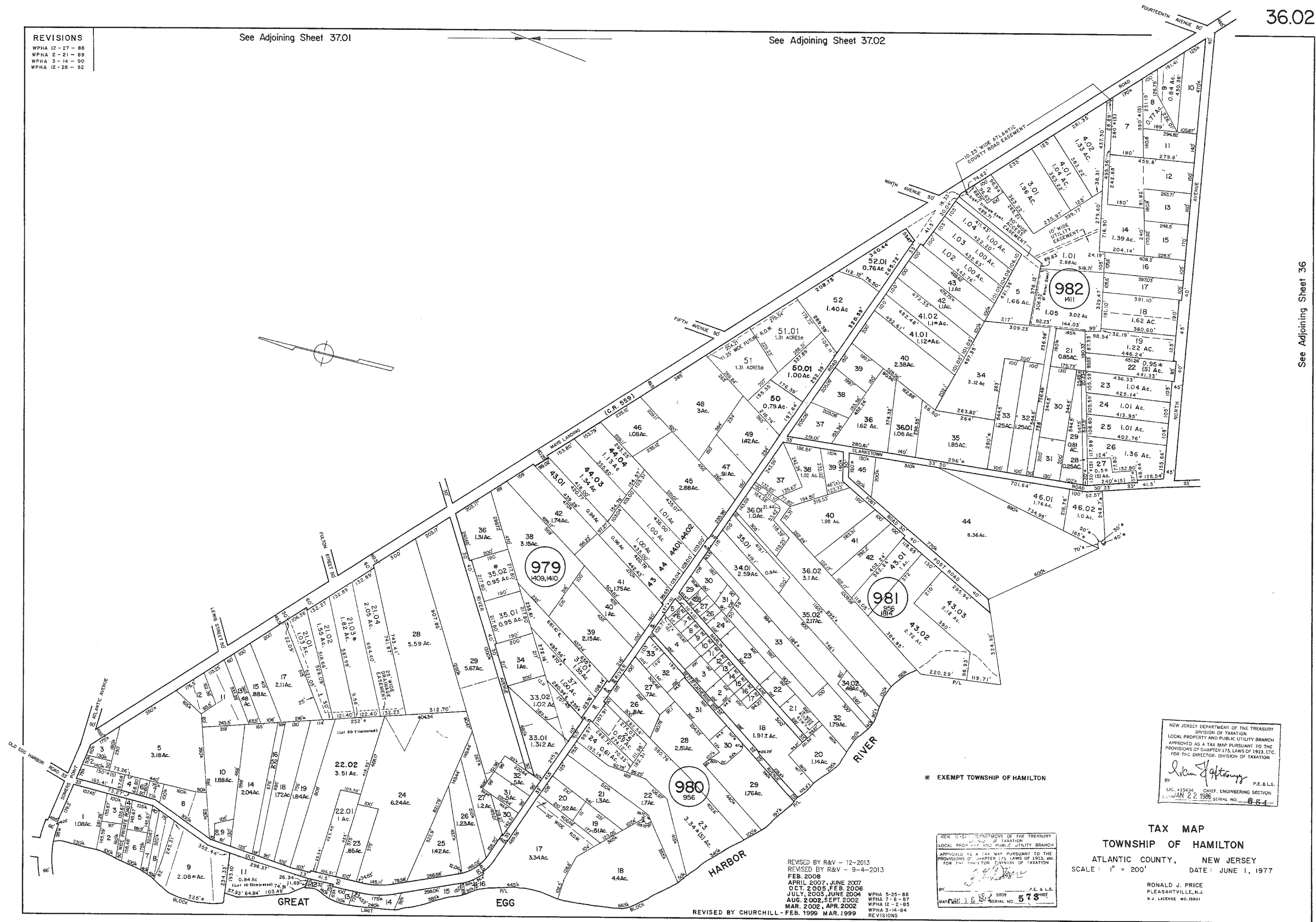


REVISIONS  
WPHA 12-27-88  
WPHA 2-21-89  
WPHA 3-14-90  
WPHA 12-28-92

See Adjoining Sheet 37.01

See Adjoining Sheet 37.02

See Adjoining Sheet 36



NEW JERSEY DEPARTMENT OF THE TREASURY  
DIVISION OF TAXATION  
LOCAL PROPERTY AND PUBLIC UTILITY BRANCH  
APPROVED AS A TAX MAP PURSUANT TO THE  
PROVISIONS OF CHAPTER 175, LAWS OF 1913, ETC.  
FOR THE DIRECTOR, DIVISION OF TAXATION

*Ronald J. Price*  
P.E. & L.S.  
LIC. #15434  
CHIEF, ENGINEERING SECTION  
JAN 22 1982 SERIAL NO. 654

**TAX MAP**  
**TOWNSHIP OF HAMILTON**  
ATLANTIC COUNTY, NEW JERSEY  
SCALE: 1" = 200'  
DATE: JUNE 1, 1977

\* EXEMPT TOWNSHIP OF HAMILTON

NEW JERSEY DEPARTMENT OF THE TREASURY  
DIVISION OF TAXATION  
LOCAL PROPERTY AND PUBLIC UTILITY BRANCH  
APPROVED AS A TAX MAP PURSUANT TO THE  
PROVISIONS OF CHAPTER 175, LAWS OF 1913, ETC.  
FOR THE DIRECTOR, DIVISION OF TAXATION

*Ronald J. Price*  
P.E. & L.S.  
LIC. #15434  
CHIEF, ENGINEERING SECTION  
JAN 22 1982 SERIAL NO. 578

REVISED BY R&V - 12-2013  
REVISED BY R&V - 9-4-2013  
FEB. 2008  
APRIL 2007, JUNE 2007  
OCT. 2005, FEB. 2006  
JULY, 2003, JUNE 2004  
AUG. 2002, SEPT. 2002  
MAR. 2002, APR. 2002  
REVISED BY CHURCHILL - FEB. 1999 MAR. 1999

RONALD J. PRICE  
PLEASANTVILLE, N.J.  
N.J. LICENSE NO. 15901