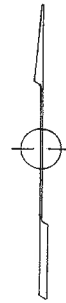
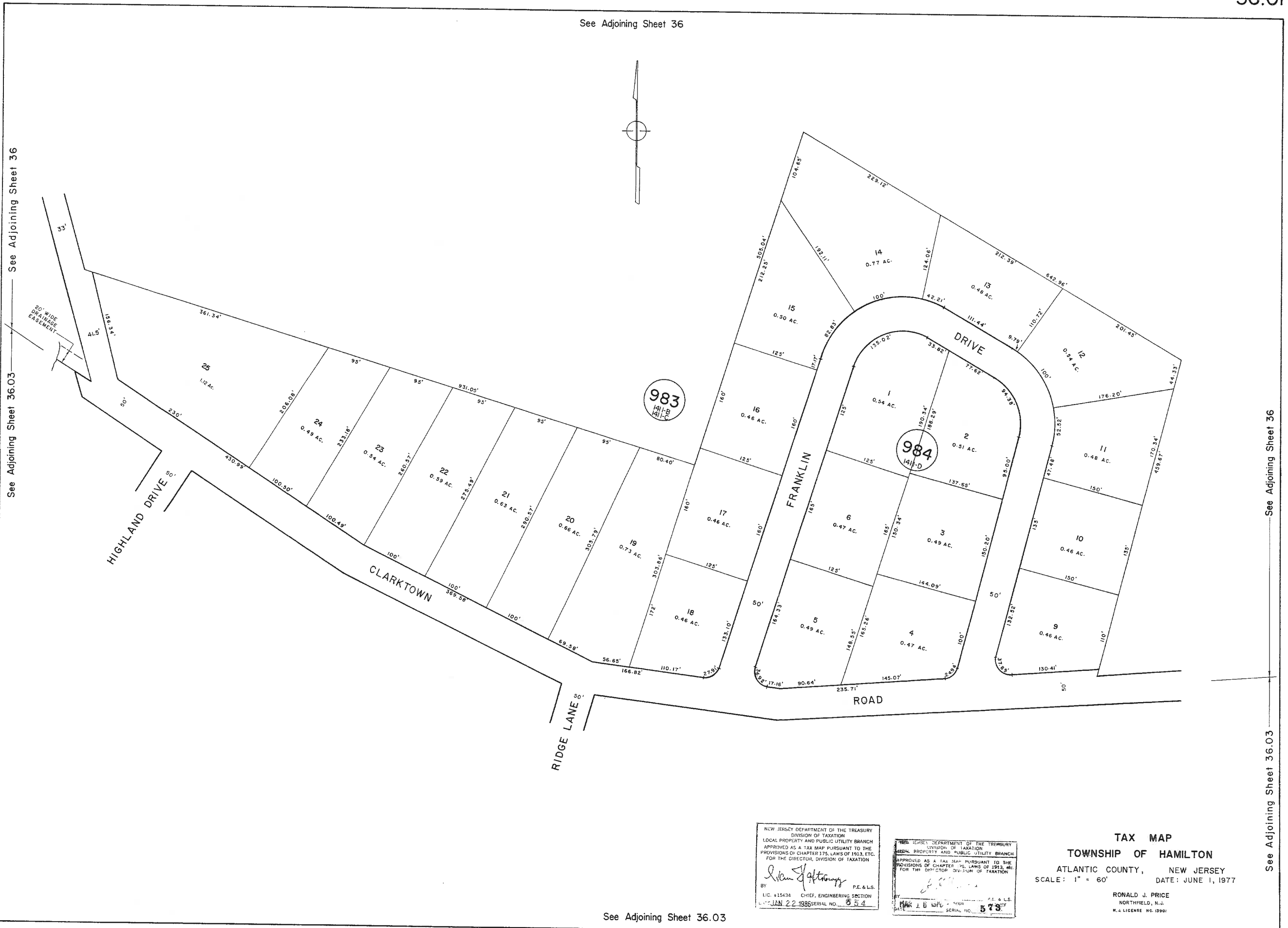


See Adjoining Sheet 36



See Adjoining Sheet 36.03



See Adjoining Sheet 36.03

NEW JERSEY DEPARTMENT OF THE TREASURY
 DIVISION OF TAXATION
 LOCAL PROPERTY AND PUBLIC UTILITY BRANCH
 APPROVED AS A TAX MAP PURSUANT TO THE
 PROVISIONS OF CHAPTER 175, LAWS OF 1913, ETC.
 FOR THE DIRECTOR, DIVISION OF TAXATION

William J. Anthony P.E. & L.S.
 LIC. #15438 CHIEF, ENGINEERING SECTION
 JAN 22 1986 SERIAL NO. 654

NEW JERSEY DEPARTMENT OF THE TREASURY
 DIVISION OF TAXATION
 LOCAL PROPERTY AND PUBLIC UTILITY BRANCH
 APPROVED AS A TAX MAP PURSUANT TO THE
 PROVISIONS OF CHAPTER 175, LAWS OF 1913, ETC.
 FOR THE DIRECTOR, DIVISION OF TAXATION

573
 JAN 22 1986 SERIAL NO. 573

TAX MAP
 TOWNSHIP OF HAMILTON
 ATLANTIC COUNTY, NEW JERSEY
 SCALE: 1" = 60' DATE: JUNE 1, 1977

RONALD J. PRICE
 NORTHFIELD, N.J.
 N.J. LICENSE NO. 10901

See Adjoining Sheet 36.03