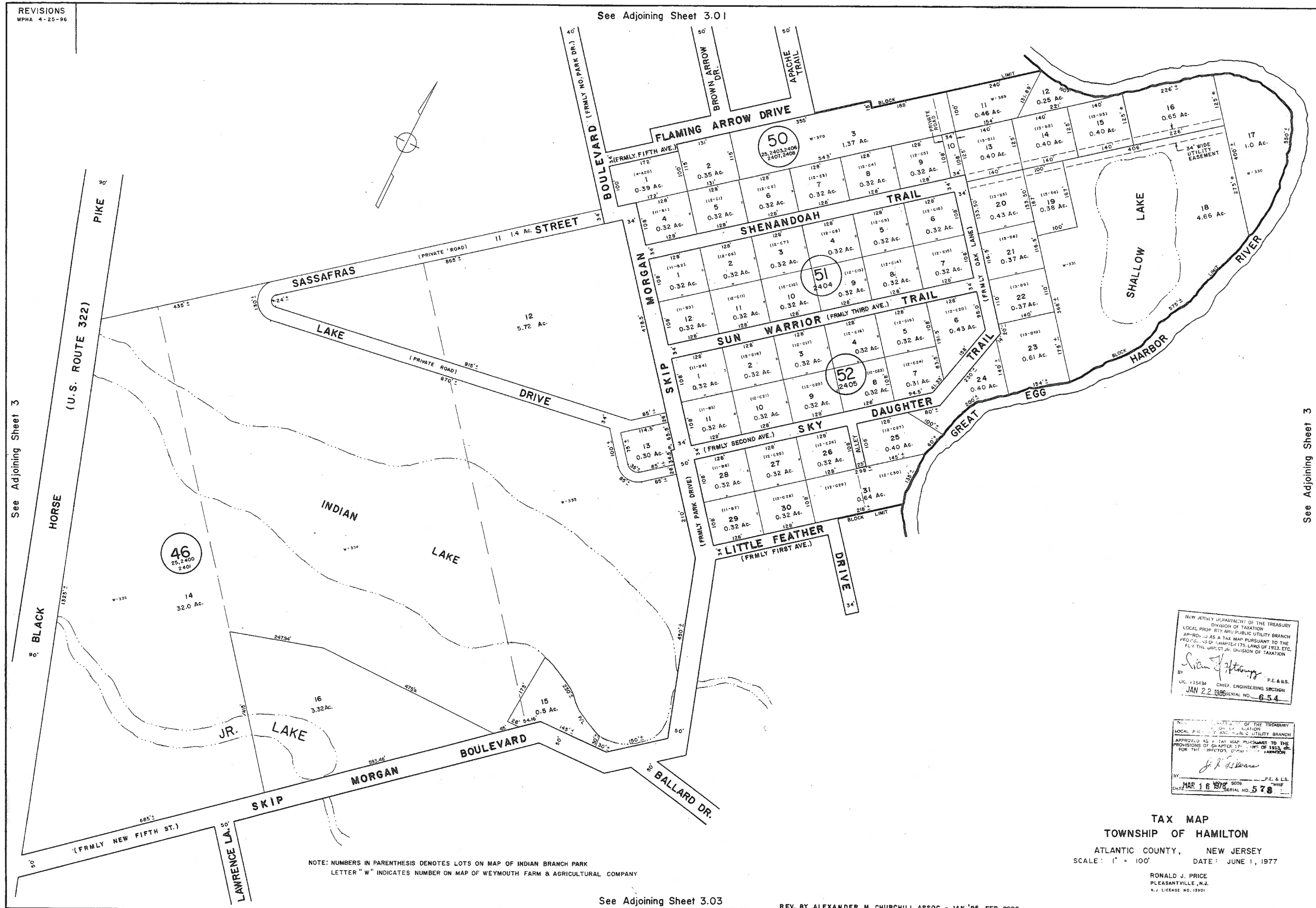


REVISIONS
WPHA 4-25-96

See Adjoining Sheet 3.01



NOTE: NUMBERS IN PARENTHESIS DENOTES LOTS ON MAP OF INDIAN BRANCH PARK
LETTER "W" INDICATES NUMBER ON MAP OF WEYMOUTH FARM & AGRICULTURAL COMPANY

See Adjoining Sheet 3.03

REV. BY ALEXANDER M. CHURCHILL ASSOC. - JAN.'95, FEB. 2008

NEW JERSEY DEPARTMENT OF THE TREASURY
DIVISION OF TAXATION
LOCAL PROP. RTY. AND PUBLIC UTILITY BRANCH
APPROVED AS A TAX MAP PURSUANT TO THE
PROVISIONS OF CHAPTER 175, LAW OF 1975, ETC.
FOR THE MUNICIPAL DIVISION OF TAXATION

Susan J. Johnson
BY: _____ P.E. & L.S.
LIC. #35434 CHIEF ENGINEERING SECTION
JAN 22 1978 SERIAL NO. 654

NEW JERSEY DEPARTMENT OF THE TREASURY
DIVISION OF TAXATION
LOCAL PROP. RTY. AND PUBLIC UTILITY BRANCH
APPROVED AS A TAX MAP PURSUANT TO THE
PROVISIONS OF CHAPTER 175, LAW OF 1975, ETC.
FOR THE MUNICIPAL DIVISION OF TAXATION

John F. Johnson
BY: _____ P.E. & L.S.
DATE: MAR 18 1978 SERIAL NO. 578

TAX MAP
TOWNSHIP OF HAMILTON
ATLANTIC COUNTY, NEW JERSEY
SCALE: 1" = 100' DATE: JUNE 1, 1977

RONALD J. PRICE
PLEASANTVILLE, N.J.
N.J. LICENSE NO. 12901