

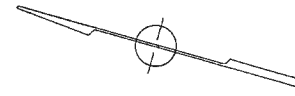
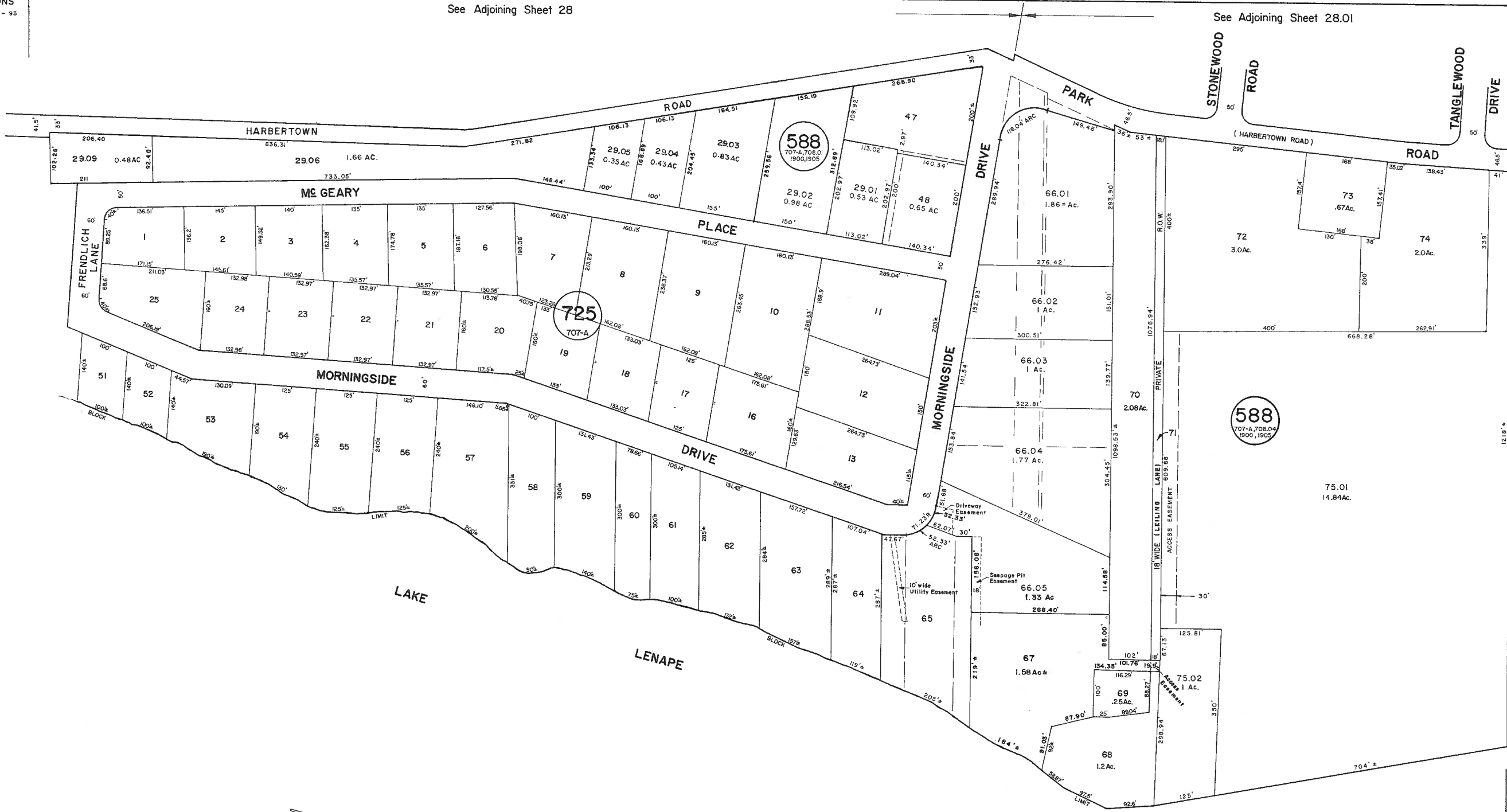
REVISIONS
WPHA 12-1-93

See Adjoining Sheet 28

See Adjoining Sheet 28.01

See Adjoining Sheet 28.06

See Adjoining Sheet 28.04



NEW JERSEY DEPARTMENT OF THE TREASURY
DIVISION OF TAXATION
LOCAL PROPERTY AND PUBLIC UTILITY BRANCH
APPROVED AS A TAX MAP PURSUANT TO THE
PROVISIONS OF CHAPTER 175, LAWS OF 1913, ETC.
FOR THE DIRECTOR, DIVISION OF TAXATION

John J. Hoffmeyer
BY P.E. & L.S.
LIC. #15434 CHIEF, ENGINEERING SECTION
JAN 22 1986 SERIAL NO. 654

NEW JERSEY DEPARTMENT OF THE TREASURY
DIVISION OF TAXATION
LOCAL PROPERTY AND PUBLIC UTILITY BRANCH
APPROVED AS A TAX MAP PURSUANT TO THE
PROVISIONS OF CHAPTER 175, LAWS OF 1913, ETC.
FOR THE DIRECTOR, DIVISION OF TAXATION

John J. Hoffmeyer
BY P.E. & L.S.
LIC. #15434 CHIEF, ENGINEERING SECTION
JAN 22 1986 SERIAL NO. 654

TAX MAP
TOWNSHIP OF HAMILTON
ATLANTIC COUNTY, NEW JERSEY
SCALE: 1" = 100'
DATE: JUNE 1, 1977

RONALD J. PRICE
PLEASANTVILLE, N.J.
N.J. LICENSE NO. 13901

REV. BY CHURCHILL - JAN. 2000, OCT. 2003
REV. BY ALEXANDER M. CHURCHILL ASSOCIATES - DEC. 1994

See Adjoining Sheet 28

WPHA 6-26-86
WPHA 8-20-85
WPHA 6-14-84
REVISIONS