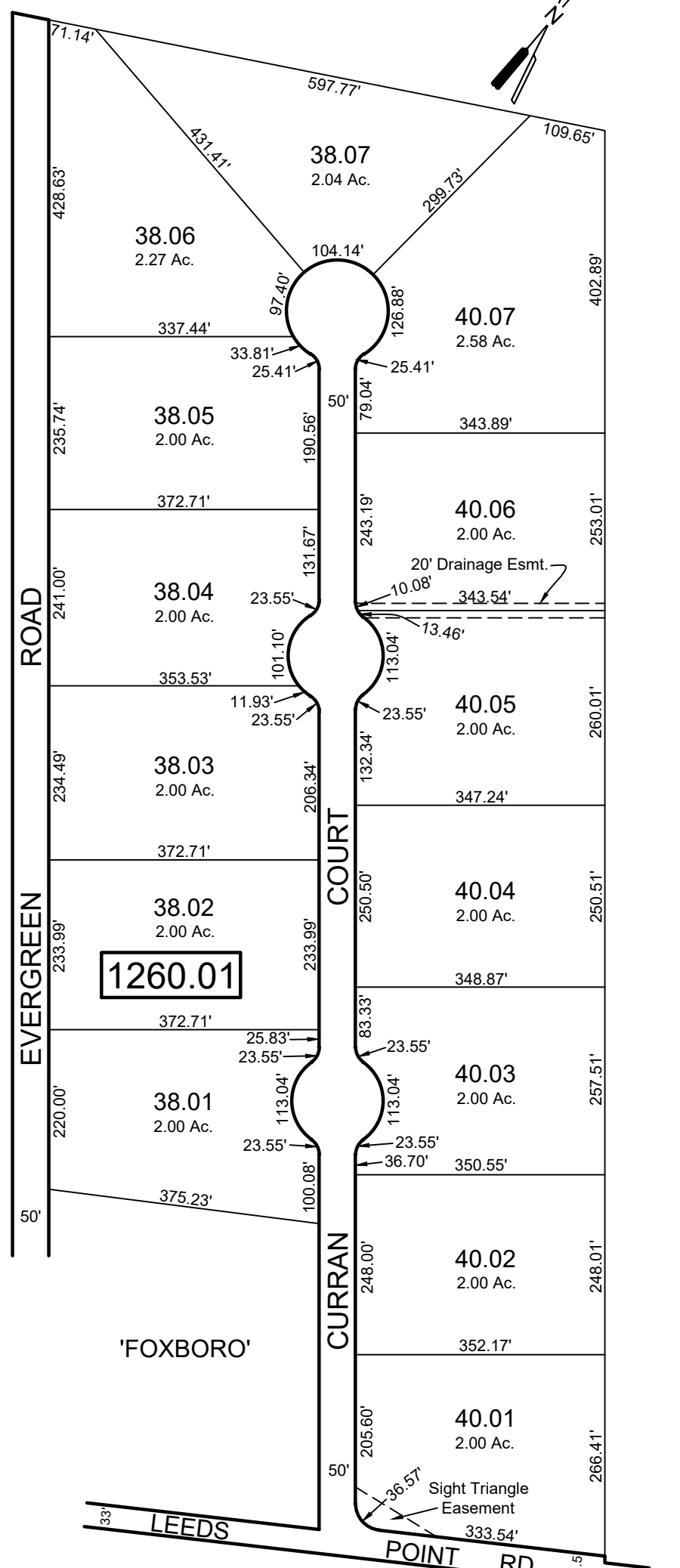
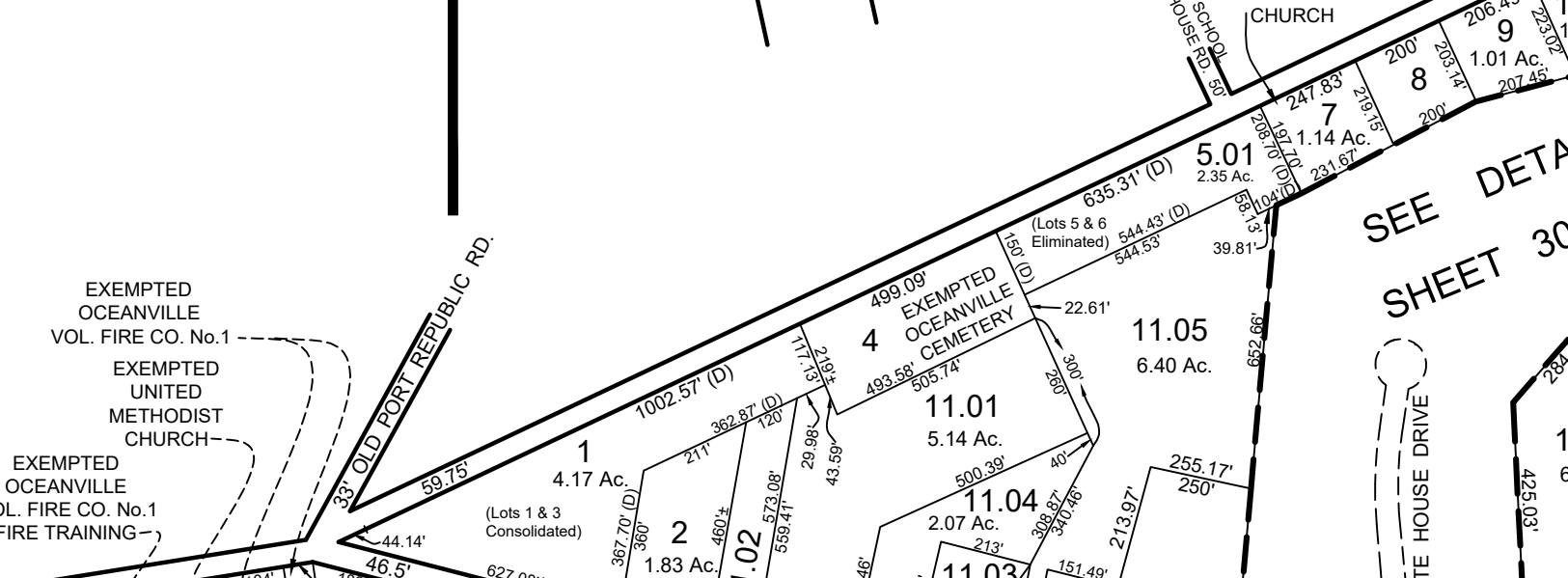
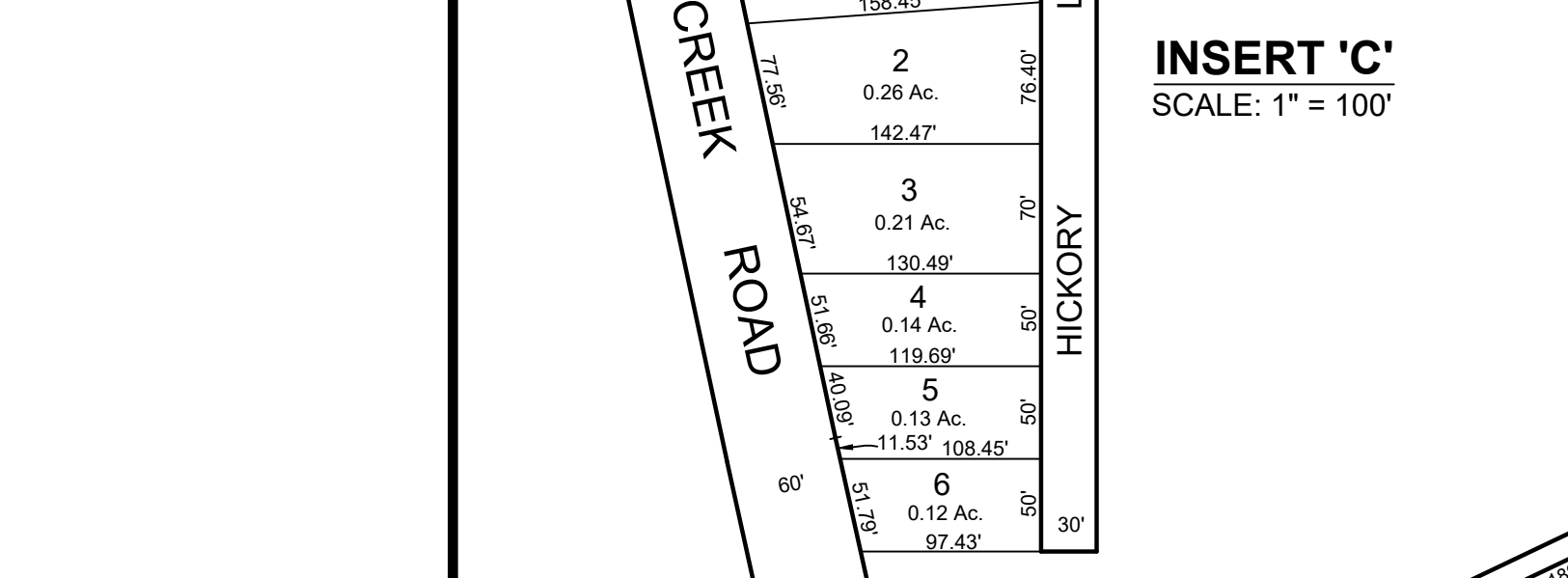
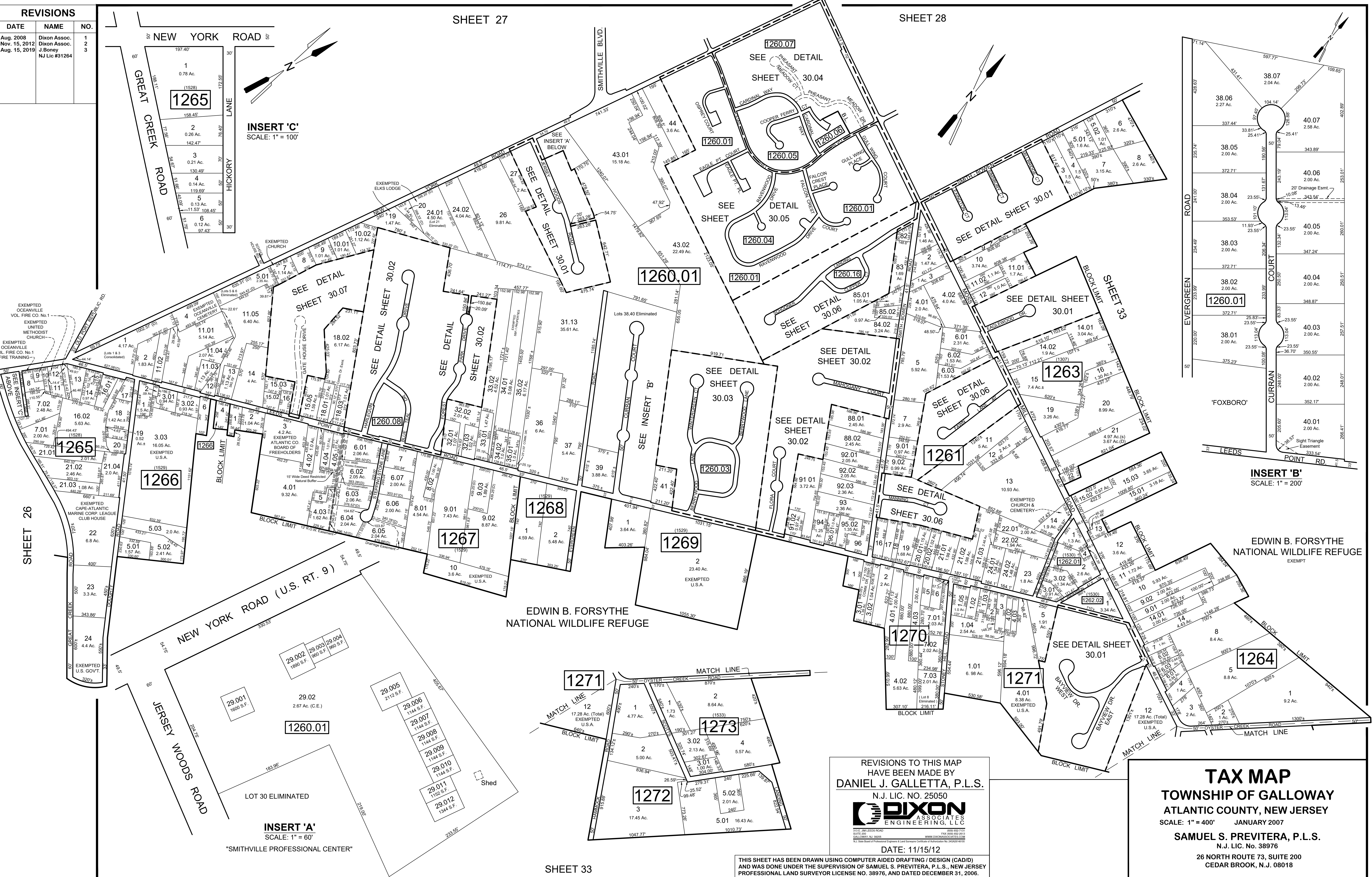


REVISIONS		
DATE	NAME	NO.
Aug. 2008	Dixon Assoc.	1
Nov. 15, 2012	Dixon Assoc.	2
Aug. 15, 2019	J.Boney NJ Lic #31264	3



REVISIONS TO THIS MAP
HAVE BEEN MADE BY
DANIEL J. GALLETTA, P.L.S.
N.J. LIC. NO. 25050

DIXON ASSOCIATES ENGINEERING, LLC

DATE: 11/15/12

TAX MAP
TOWNSHIP OF GALLOWAY
ATLANTIC COUNTY, NEW JERSEY
SCALE: 1" = 400' JANUARY 2007

SAMUEL S. PREVITERA, P.L.S.
N.J. LIC. No. 38976

26 NORTH ROUTE 73, SUITE 200
CEDAR BROOK, N.J. 08018

THIS SHEET HAS BEEN DRAWN USING COMPUTER AIDED DRAFTING / DESIGN (CAD/D) AND WAS DONE UNDER THE SUPERVISION OF SAMUEL S. PREVITERA, P.L.S., NEW JERSEY PROFESSIONAL LAND SURVEYOR LICENSE NO. 38976, AND DATED DECEMBER 31, 2006.