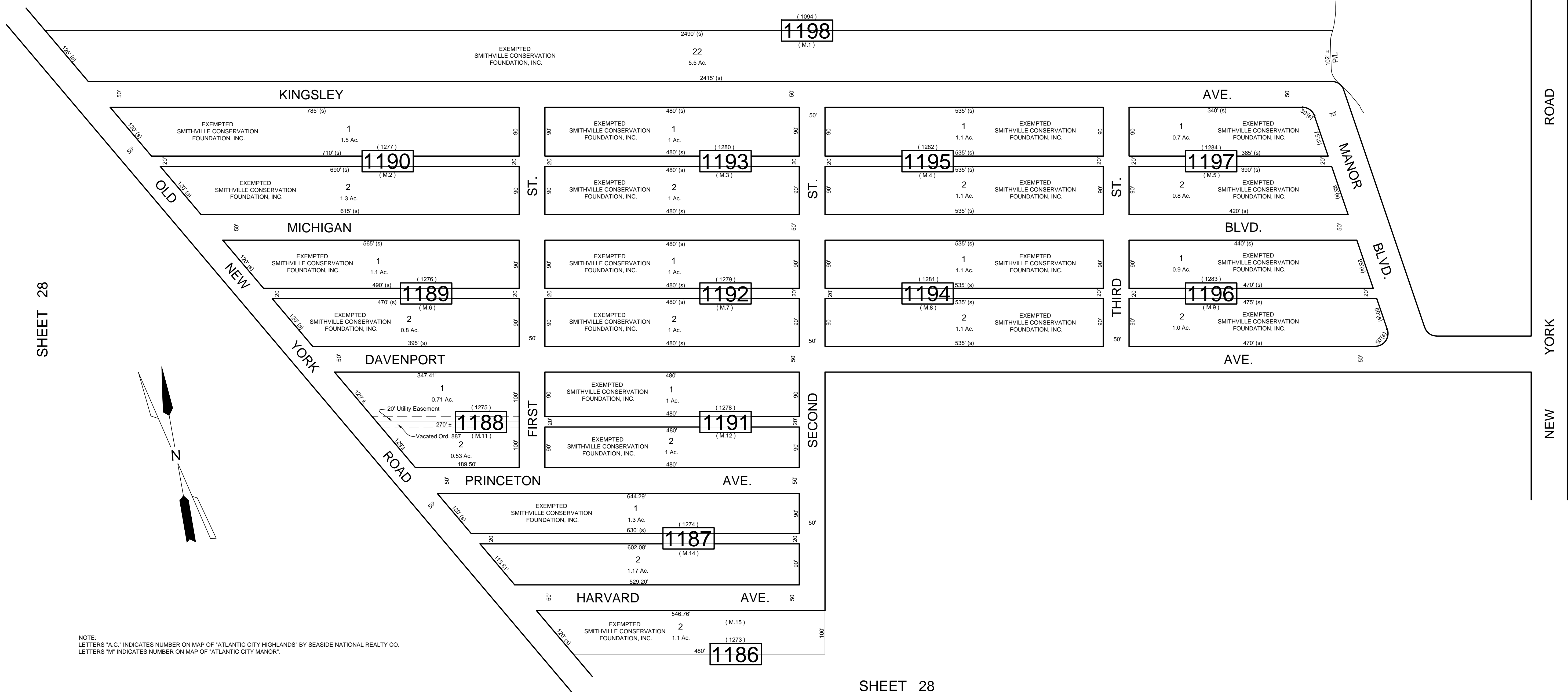


REVISIONS		
DATE	NAME	NO.

SHEET 28



NOTE:  
 LETTERS "A.C." INDICATES NUMBER ON MAP OF "ATLANTIC CITY HIGHLANDS" BY SEASIDE NATIONAL REALTY CO.  
 LETTERS "M" INDICATES NUMBER ON MAP OF "ATLANTIC CITY MANOR".

SHEET 28

TAX MAP  
 TOWNSHIP OF GALLOWAY  
 ATLANTIC COUNTY, NEW JERSEY  
 SCALE: 1" = 100' JANUARY 2007  
 SAMUEL S. PREVITERA, P.L.S.  
 N.J. LIC. No. 38976  
 26 NORTH ROUTE 73, SUITE 200  
 CEDAR BROOK, N.J. 08018

THIS SHEET HAS BEEN DRAWN USING COMPUTER AIDED DRAFTING / DESIGN (CAD/D) AND WAS DONE UNDER THE SUPERVISION OF SAMUEL S. PREVITERA, P.L.S., NEW JERSEY PROFESSIONAL LAND SURVEYOR LICENSE NO. 38976, AND DATED DECEMBER 31, 2006.