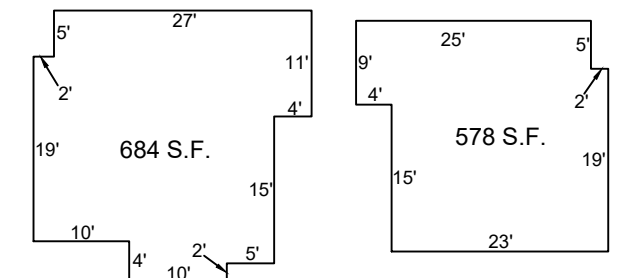
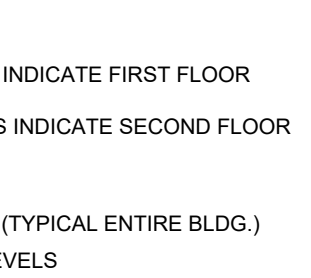
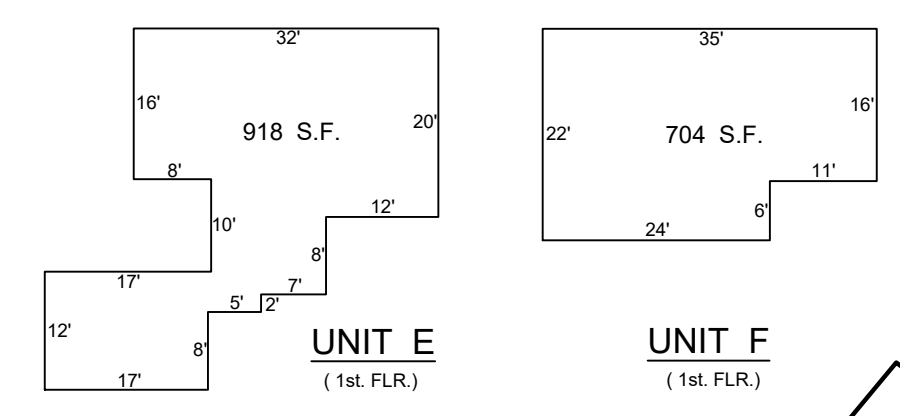
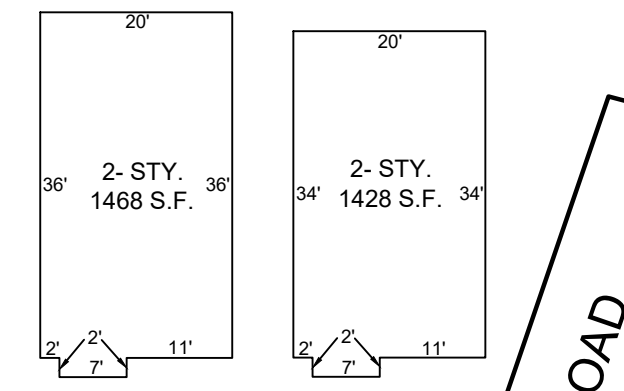


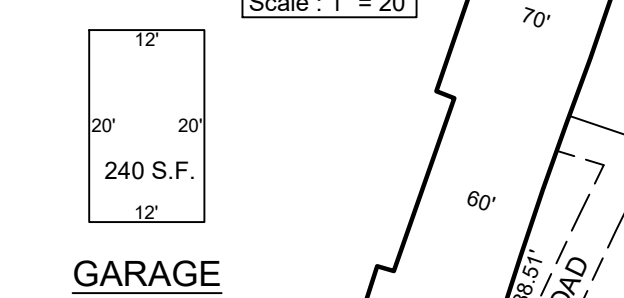
REVISIONS		
DATE	NAME	NO.
Aug. 2008	Dixon Assoc.	1
8-15-19	J.Boney NJ Lic #31264	2



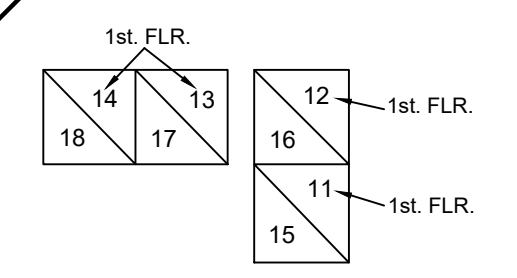
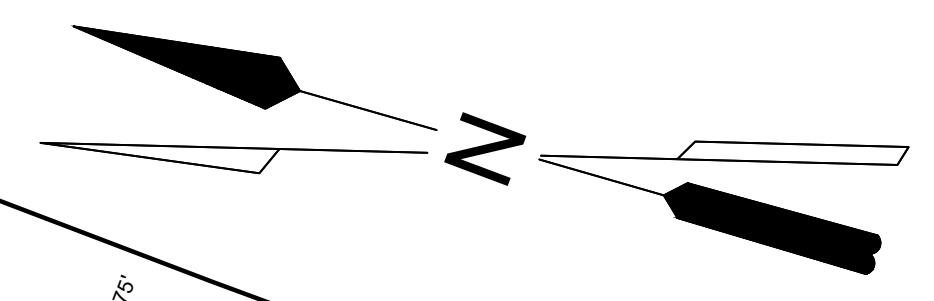
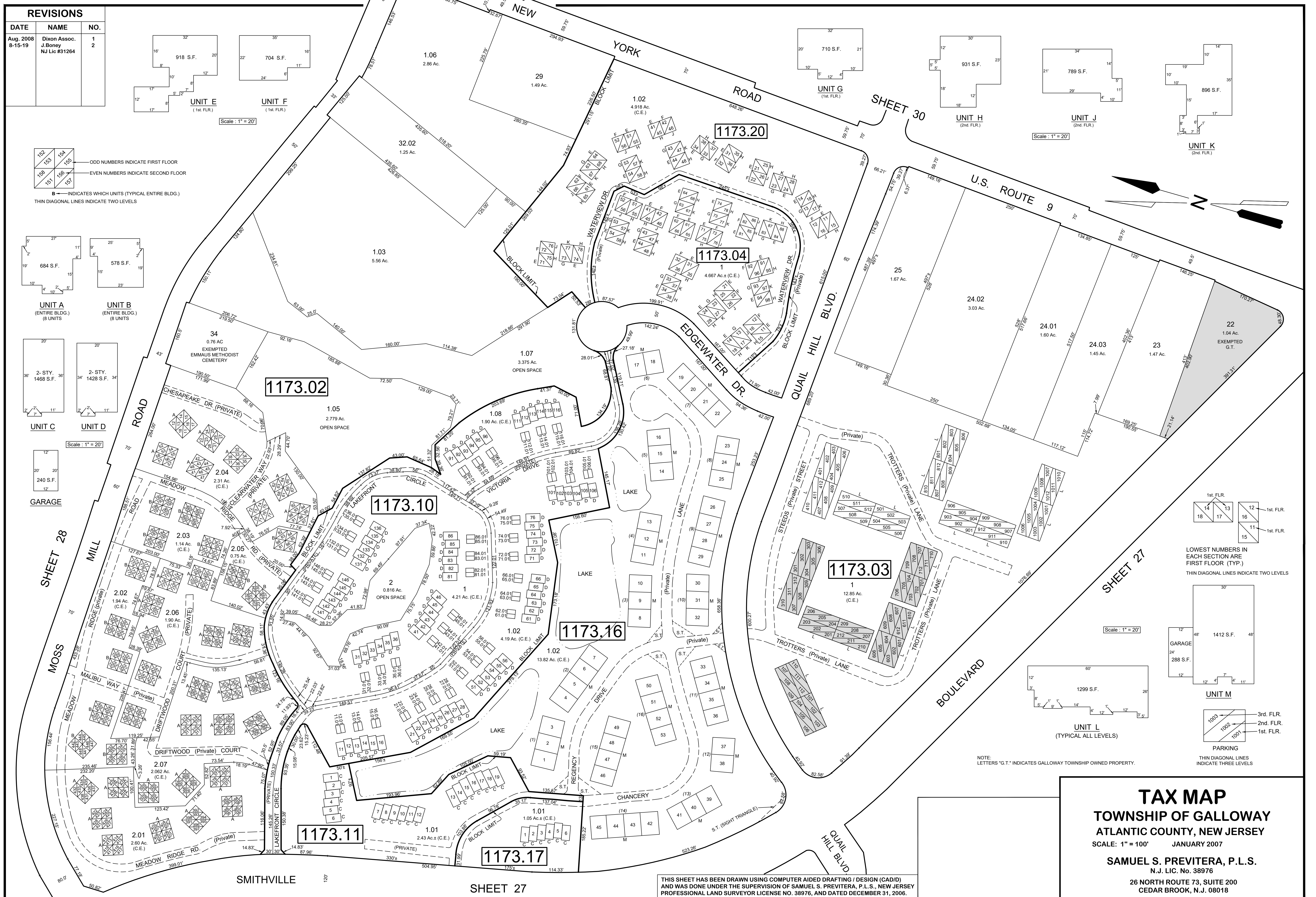
UNIT A (ENTIRE BLDG.) (8 UNITS)  
UNIT B (ENTIRE BLDG.) (8 UNITS)



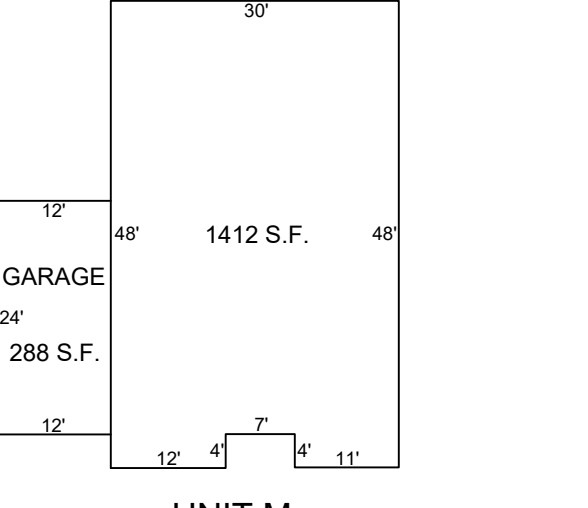
UNIT C  
UNIT D



GARAGE



LOWEST NUMBERS IN EACH SECTION ARE FIRST FLOOR (TYP.)  
THIN DIAGONAL LINES INDICATE TWO LEVELS



UNIT L (TYPICAL ALL LEVELS)  
PARKING  
THIN DIAGONAL LINES INDICATE THREE LEVELS

NOTE: LETTERS "G.T." INDICATES GALLOWAY TOWNSHIP OWNED PROPERTY.

**TAX MAP**  
TOWNSHIP OF GALLOWAY  
ATLANTIC COUNTY, NEW JERSEY  
SCALE: 1" = 100' JANUARY 2007  
SAMUEL S. PREVITERA, P.L.S.  
N.J. LIC. No. 38976  
26 NORTH ROUTE 73, SUITE 200  
CEDAR BROOK, N.J. 08018

THIS SHEET HAS BEEN DRAWN USING COMPUTER AIDED DRAFTING / DESIGN (CAD/D) AND WAS DONE UNDER THE SUPERVISION OF SAMUEL S. PREVITERA, P.L.S., NEW JERSEY PROFESSIONAL LAND SURVEYOR LICENSE NO. 38976, AND DATED DECEMBER 31, 2006.