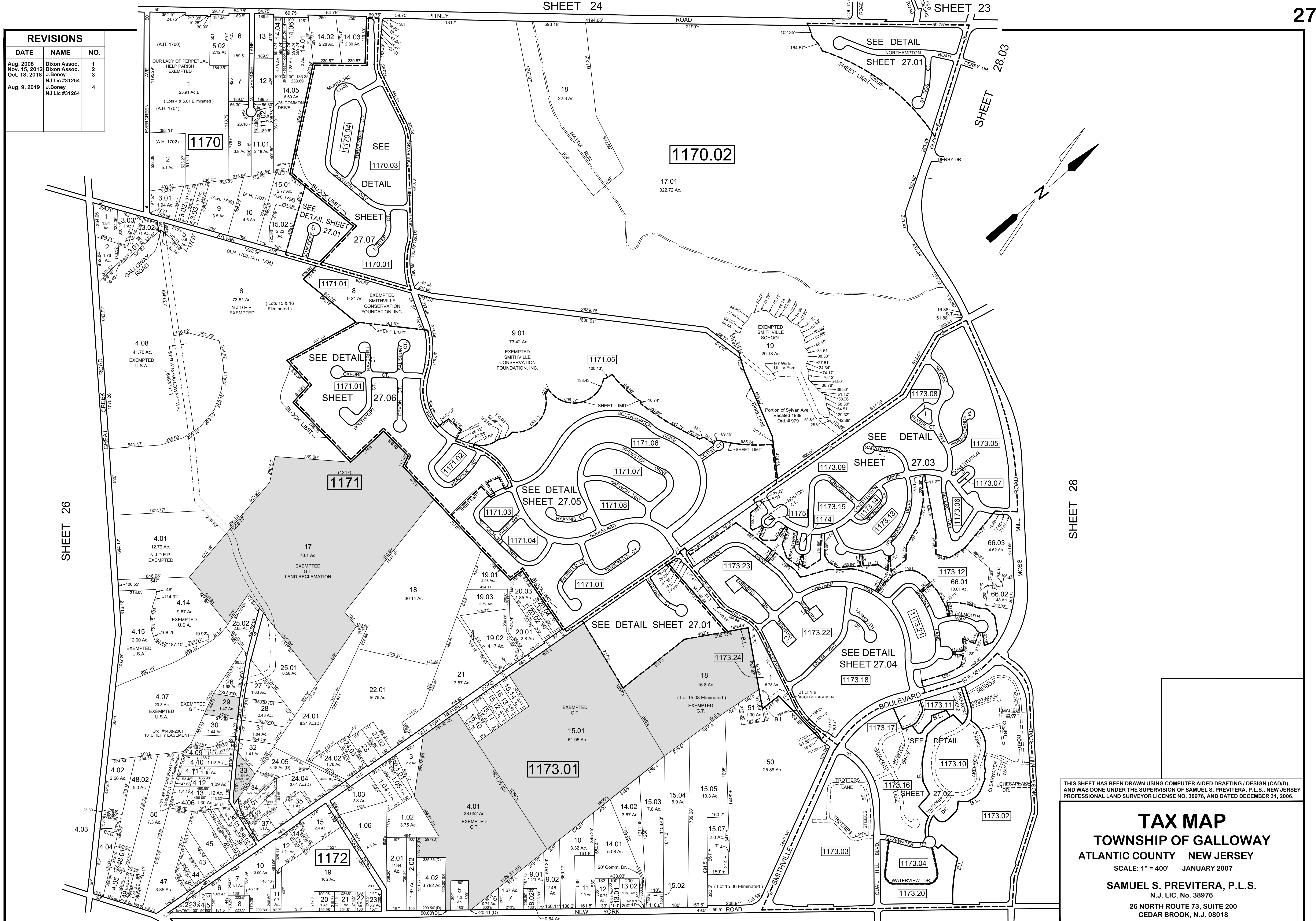


REVISIONS		
DATE	NAME	NO.
Aug. 2008	Dixon Assoc.	1
Nov. 15, 2012	Dixon Assoc.	2
Oct. 18, 2018	J. Boney	3
Aug. 9, 2019	N.J. Lic #31264 J. Boney N.J. Lic #31264	4



THIS SHEET HAS BEEN DRAWN USING COMPUTER AIDED DRAFTING / DESIGN (CAD/D) AND WAS DONE UNDER THE SUPERVISION OF SAMUEL S. PREVITERA, P.L.S., NEW JERSEY PROFESSIONAL LAND SURVEYOR LICENSE NO. 38976, AND DATED DECEMBER 31, 2006.

**TAX MAP**  
**TOWNSHIP OF GALLOWAY**  
 ATLANTIC COUNTY NEW JERSEY  
 SCALE: 1" = 400' JANUARY 2007  
**SAMUEL S. PREVITERA, P.L.S.**  
 N.J. Lic. No. 38976  
 26 NORTH ROUTE 73, SUITE 200  
 CEDAR BROOK, N.J. 08018

NOTE:  
 LETTERS "A.H." INDICATES NUMBER ON MAP OF ABSECON HIGHLAND BY GILBERT & O'CALLAGHAN  
 LETTERS "U.S.A." INDICATES UNITED STATES OF AMERICA OWNED PROPERTY.  
 LETTERS "G.T." INDICATES GALLOWAY TOWNSHIP OWNED PROPERTY.