

EDWIN B. FORSYTHE NATIONAL WILDLIFE REFUGE

REVISIONS		
DATE	NAME	NO.
Aug. 2008	Dixon Assoc.	1
8-15-19	J.Boney NJ Lic #31264	2

SHEET 27

SHEET 27

SHEET 24

SHEET 26.01

SHEET 26.03

SHEET 26.01

SHEET 26.01

SHEET 26.01

SHEET 26.01

SHEET 26.01

SHEET 26.01

SHEET 26.01

SHEET 26.01

SHEET 26.01

SHEET 26.01

SHEET 26.01

SHEET 26.01

SHEET 26.01

SHEET 26.01

SHEET 26.01

SHEET 26.01

SHEET 26.01

SHEET 26.01

SHEET 26.01

SHEET 26.01

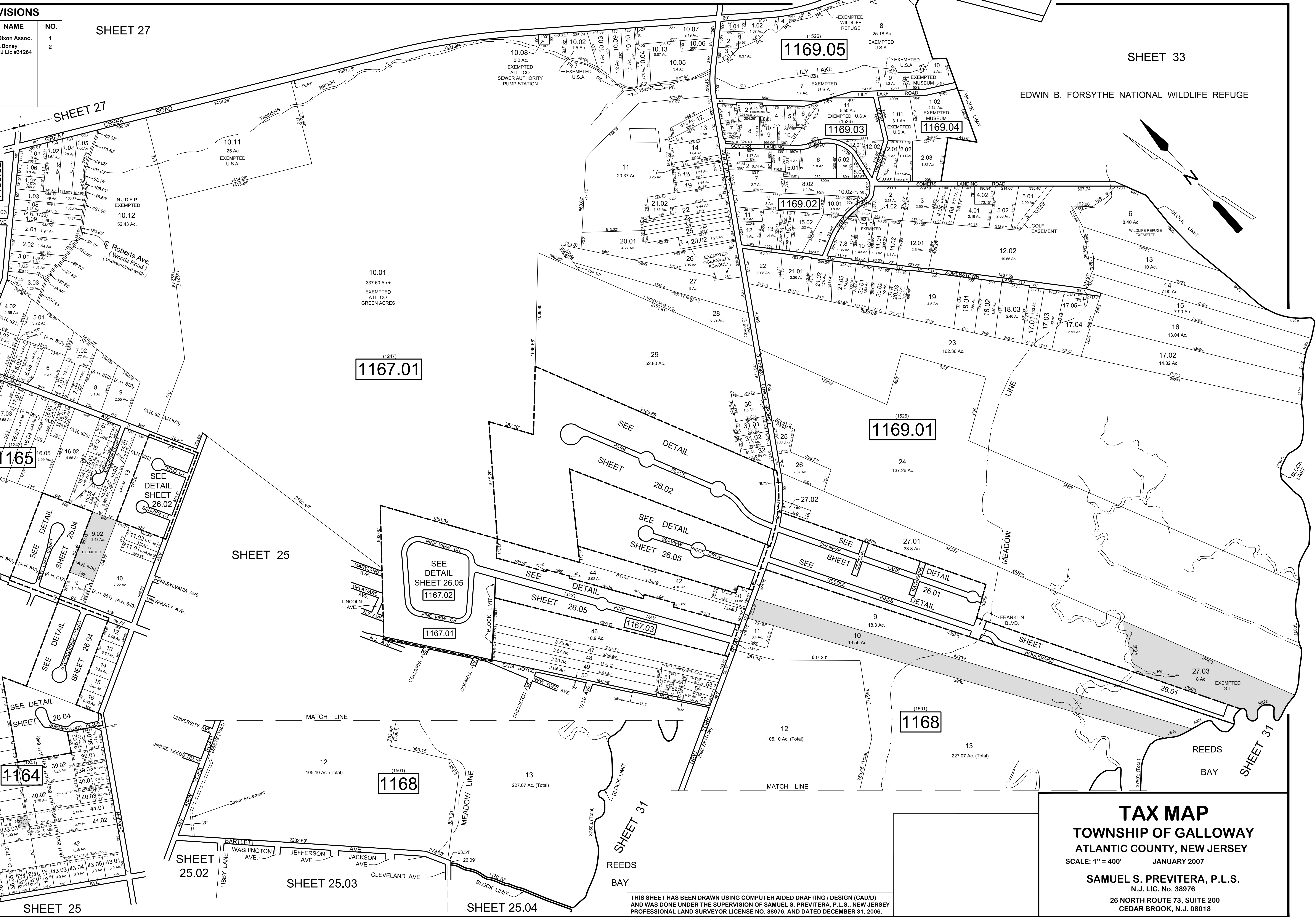
SHEET 26.01

SHEET 26.01

SHEET 26.01

SHEET 26.01

SHEET 26.01



SHEET 24

SHEET 24

SHEET 24

SHEET 24

SHEET 24

SHEET 24

1165

1167.01

1169.01

1167.01

1167.03

1168

1168

1164

SHEET 25

SHEET 25

SHEET 25.02

SHEET 25.03

SHEET 25.04

SHEET 31

SHEET 37

NOTE:
 LETTERS "A.H." INDICATES NUMBER ON MAP OF ABSECON HIGHLAND BY GILBERT & O'CALLAGHAN
 LETTERS "G.T." INDICATES GALLOWAY TOWNSHIP OWNED PROPERTY.
 LETTERS "D.V." INDICATES DISABLED VETERAN.
 LETTERS "U.S.A." INDICATES UNITED STATES OF AMERICA OWNED PROPERTY.

THIS SHEET HAS BEEN DRAWN USING COMPUTER AIDED DRAFTING / DESIGN (CAD/D) AND WAS DONE UNDER THE SUPERVISION OF SAMUEL S. PREVITERA, P.L.S., NEW JERSEY PROFESSIONAL LAND SURVEYOR LICENSE NO. 38976, AND DATED DECEMBER 31, 2006.

TAX MAP
TOWNSHIP OF GALLOWAY
 ATLANTIC COUNTY, NEW JERSEY
 SCALE: 1" = 400' JANUARY 2007
SAMUEL S. PREVITERA, P.L.S.
 N.J. LIC. NO. 38976
 26 NORTH ROUTE 73, SUITE 200
 CEDAR BROOK, N.J. 08018