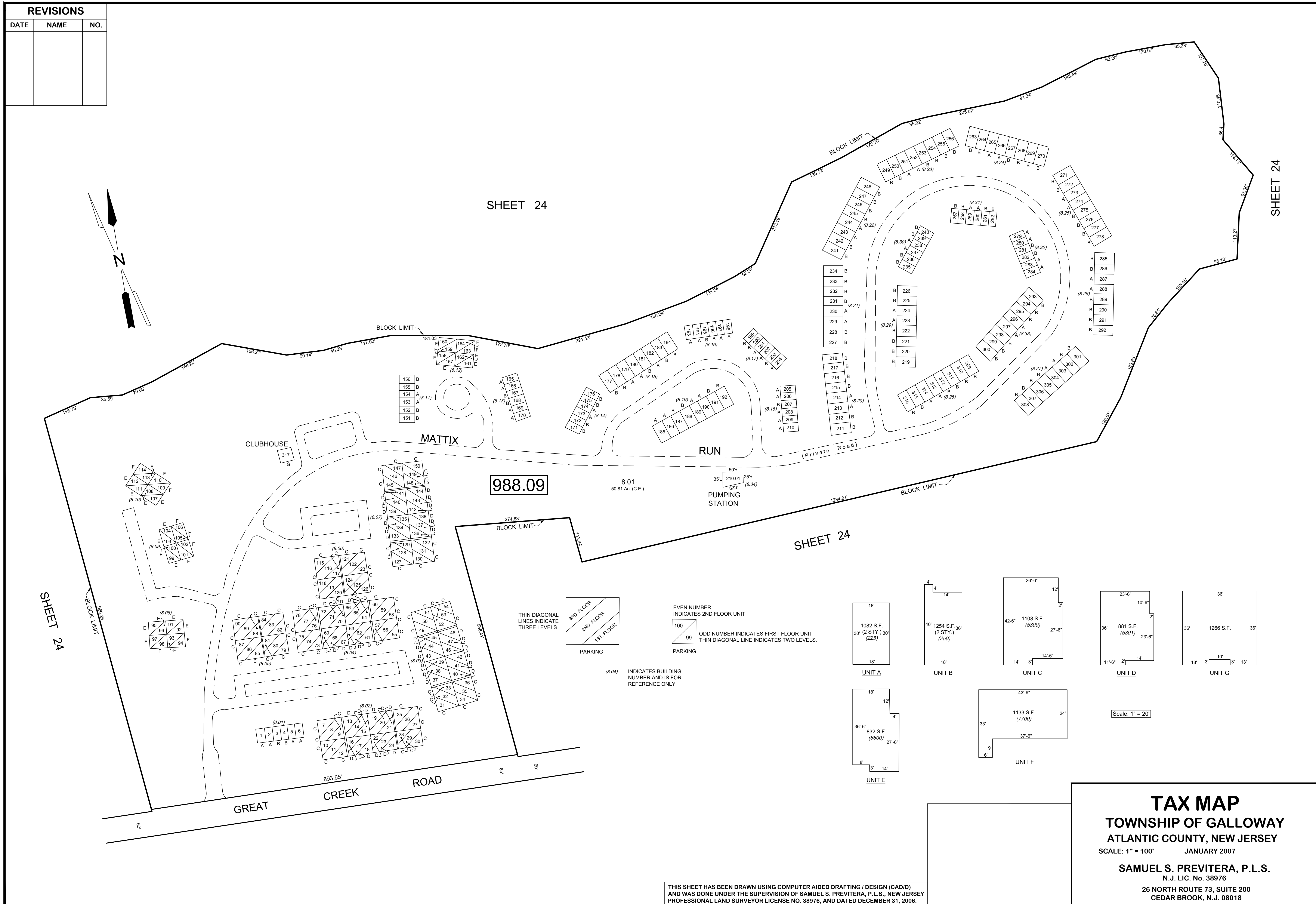
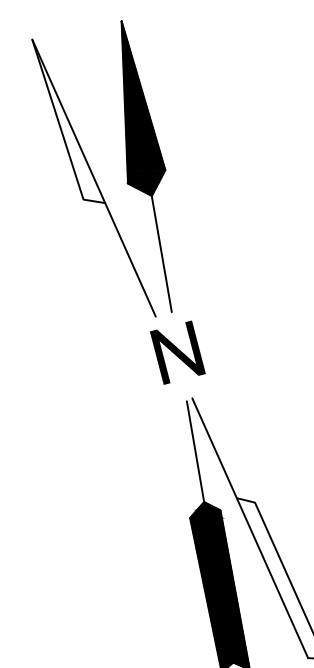


REVISIONS		
DATE	NAME	NO.



SHEET 24

SHEET 24

SHEET 24

988.09

8.01

PUMPING STATION

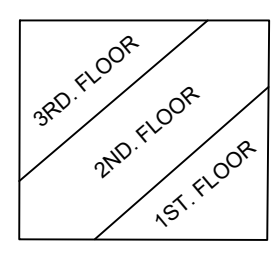
CLUBHOUSE

MATTIX

RUN

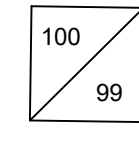
(Private Road)

THIN DIAGONAL LINES INDICATE THREE LEVELS



PARKING

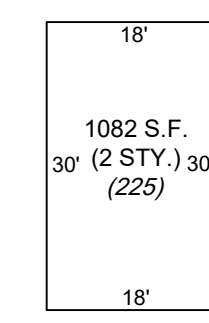
EVEN NUMBER INDICATES 2ND FLOOR UNIT



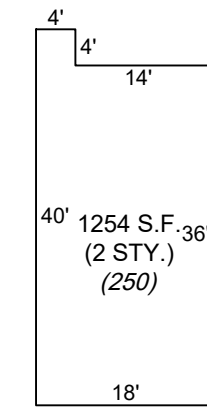
PARKING

ODD NUMBER INDICATES FIRST FLOOR UNIT  
THIN DIAGONAL LINE INDICATES TWO LEVELS.

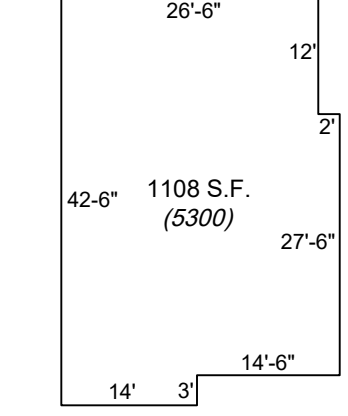
(8.04) INDICATES BUILDING NUMBER AND IS FOR REFERENCE ONLY



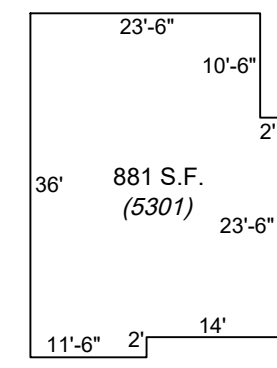
UNIT A



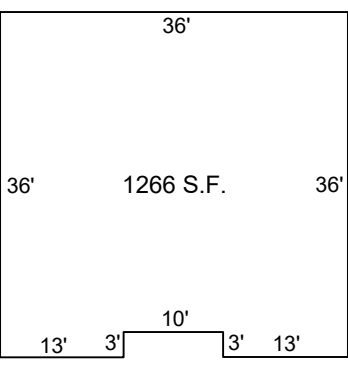
UNIT B



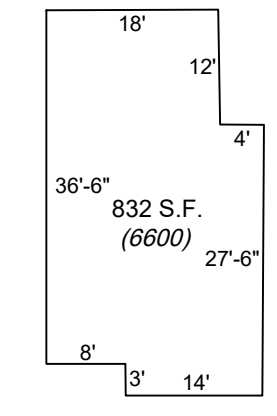
UNIT C



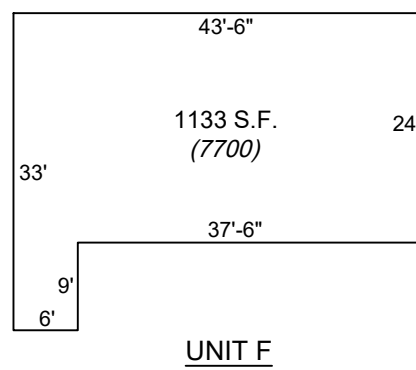
UNIT D



UNIT E



UNIT F



UNIT G

Scale: 1" = 20'

**TAX MAP**  
**TOWNSHIP OF GALLOWAY**  
 ATLANTIC COUNTY, NEW JERSEY  
 SCALE: 1" = 100' JANUARY 2007  
**SAMUEL S. PREVITERA, P.L.S.**  
 N.J. LIC. No. 38976  
 26 NORTH ROUTE 73, SUITE 200  
 CEDAR BROOK, N.J. 08018

THIS SHEET HAS BEEN DRAWN USING COMPUTER AIDED DRAFTING / DESIGN (CAD/D) AND WAS DONE UNDER THE SUPERVISION OF SAMUEL S. PREVITERA, P.L.S., NEW JERSEY PROFESSIONAL LAND SURVEYOR LICENSE NO. 38976, AND DATED DECEMBER 31, 2006.