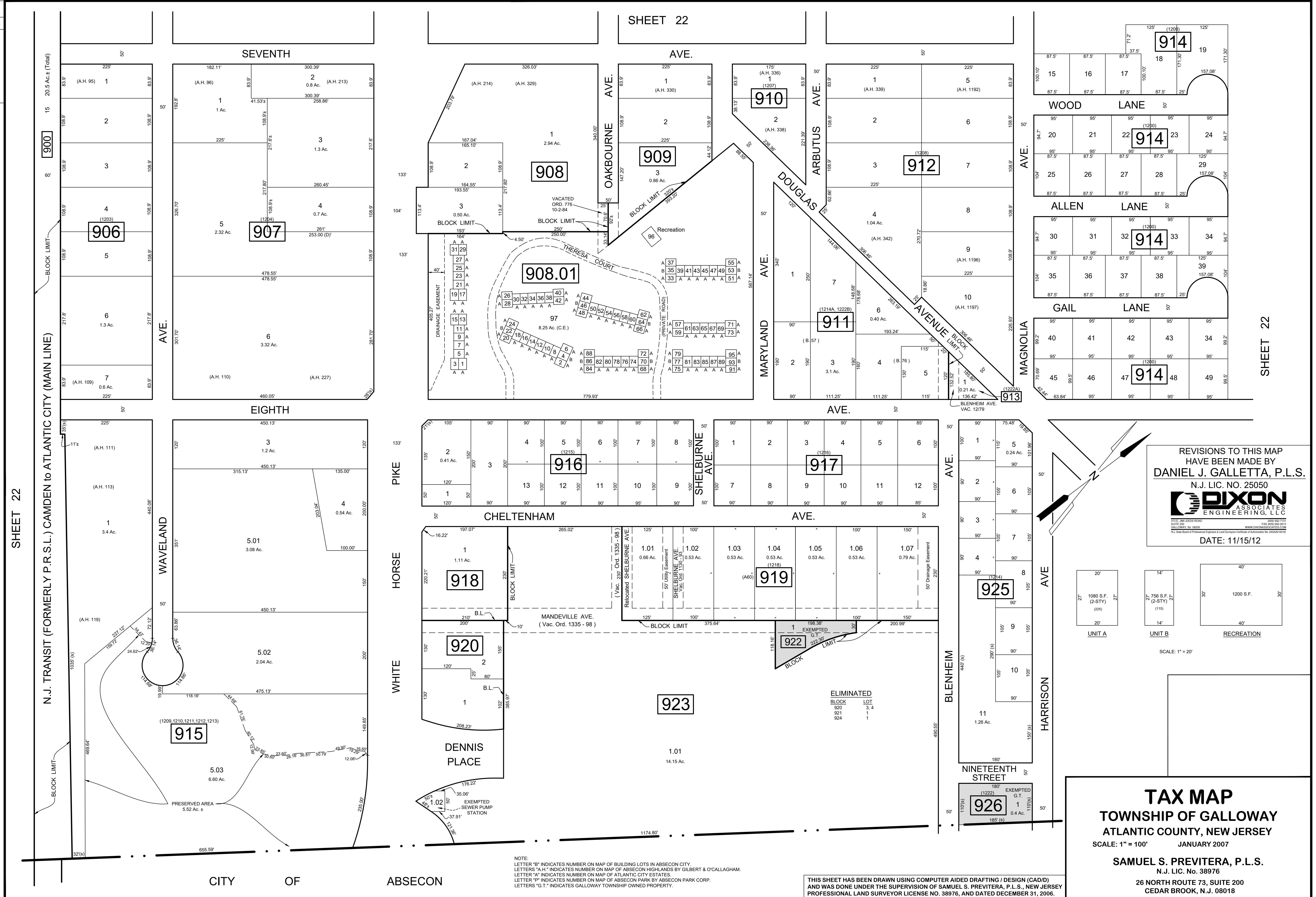
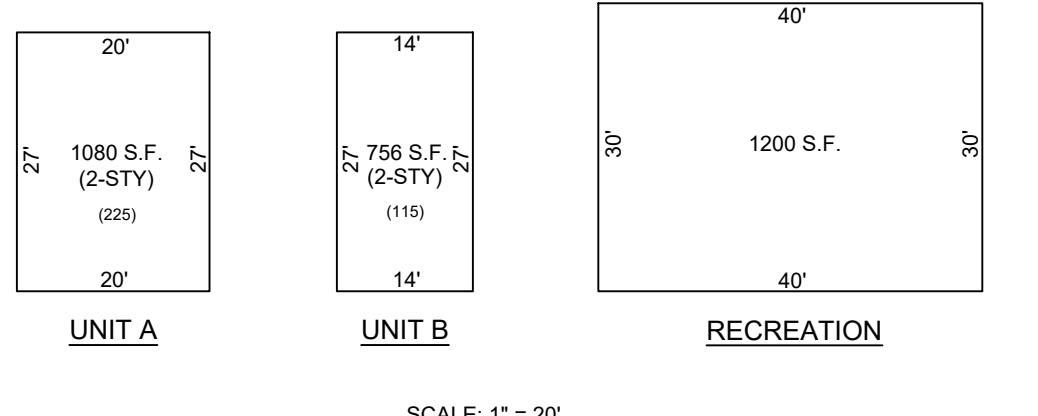


REVISIONS		
DATE	NAME	NO.
Nov. 15, 2012	Dixon Assoc.	1
Aug. 15, 2019	J. Boney NJ Lic #31264	2



REVISIONS TO THIS MAP
HAVE BEEN MADE BY
DANIEL J. GALLETTA, P.L.S.
N.J. LIC. NO. 25050
DIXON ASSOCIATES
ENGINEERING, LLC
DATE: 11/15/12



TAX MAP
TOWNSHIP OF GALLOWAY
ATLANTIC COUNTY, NEW JERSEY
SCALE: 1" = 100' JANUARY 2007
SAMUEL S. PREVITERA, P.L.S.
N.J. LIC. NO. 38976
26 NORTH ROUTE 73, SUITE 200
CEDAR BROOK, N.J. 08018

NOTE:
LETTER "B" INDICATES NUMBER ON MAP OF BUILDING LOTS IN ABSECON CITY.
LETTERS "A.H." INDICATES NUMBER ON MAP OF ABSECON HIGHLANDS BY GILBERT & O'CALLAGHAN.
LETTER "A" INDICATES NUMBER ON MAP OF ATLANTIC CITY ESTATES.
LETTER "P" INDICATES NUMBER ON MAP OF ABSECON PARK BY ABSECON PARK CORP.
LETTERS "G.T." INDICATES GALLOWAY TOWNSHIP OWNED PROPERTY.

THIS SHEET HAS BEEN DRAWN USING COMPUTER AIDED DRAFTING / DESIGN (CAD/D) AND WAS DONE UNDER THE SUPERVISION OF SAMUEL S. PREVITERA, P.L.S., NEW JERSEY PROFESSIONAL LAND SURVEYOR LICENSE NO. 38976, AND DATED DECEMBER 31, 2006.

SHEET 22

SHEET 22