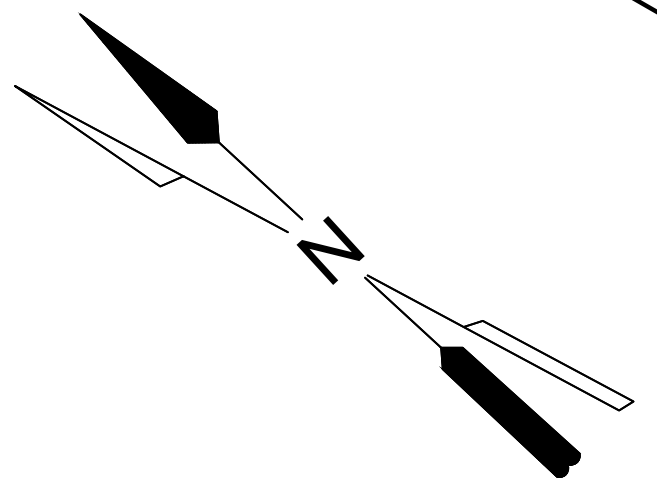
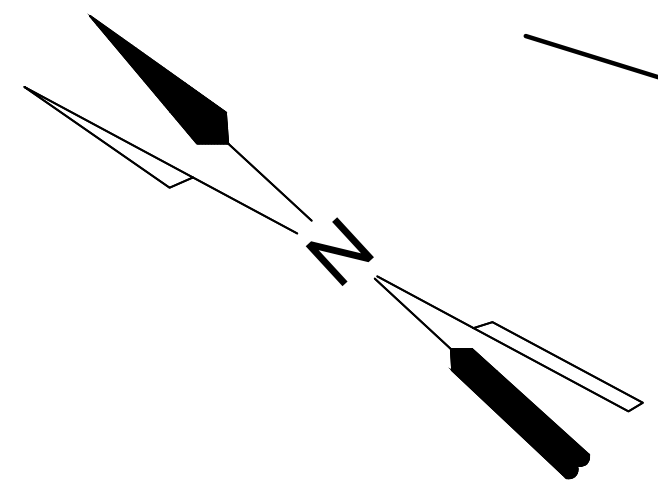
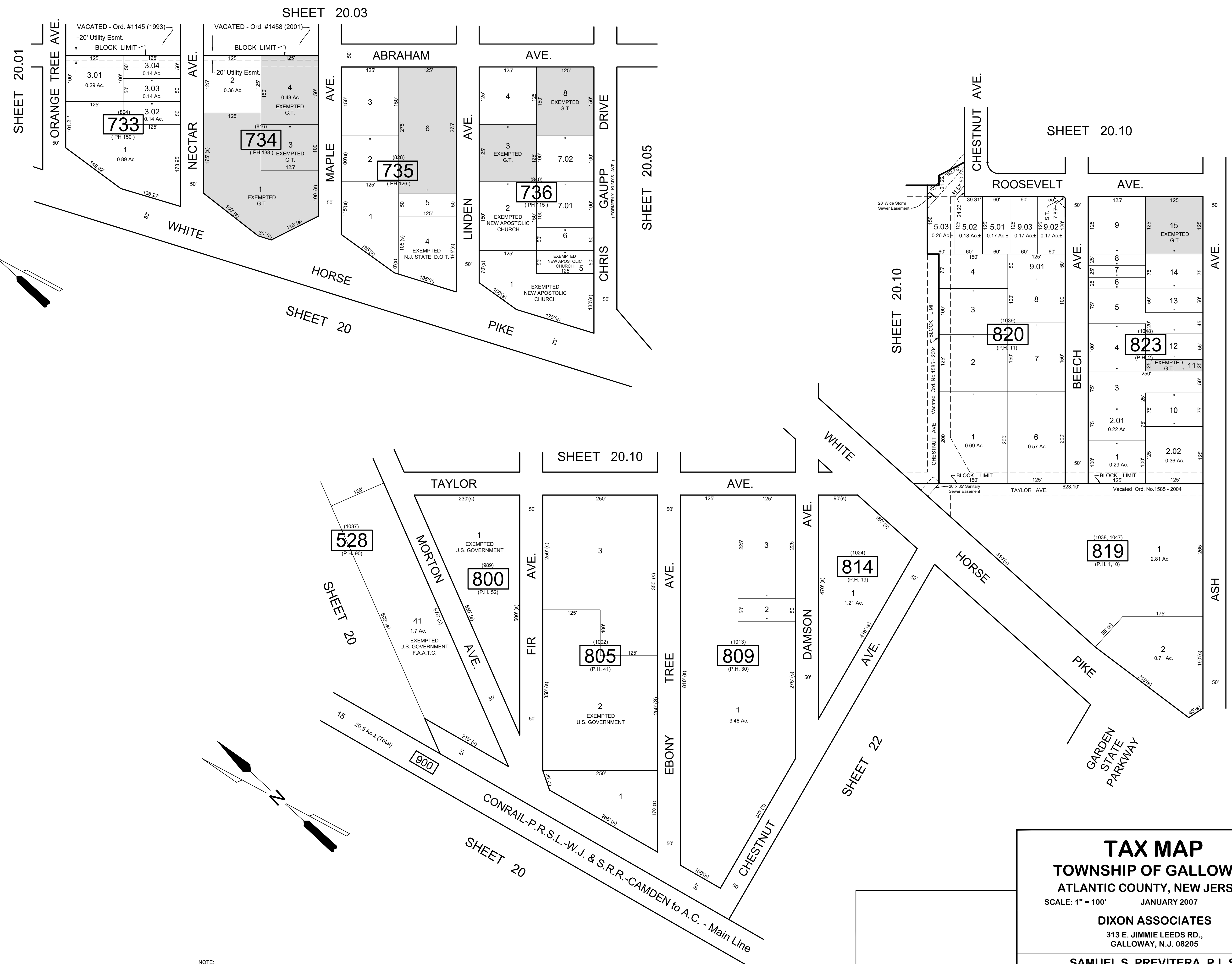


REVISIONS		
DATE	NAME	NO.
Aug. 2008	Dixon Assoc.	1
Nov. 15, 2012	Dixon Assoc.	2
Aug. 15, 2019	J.Boney NJ Lic #31264	3



NOTE:
 LETTERS "P.H." INDICATES NUMBER ON MAP OF "PINEHURST" BY PINEHURST DEV. CO.
 LETTERS "G.T." INDICATES GALLOWAY TOWNSHIP OWNED PROPERTY.
 LETTERS "F.A.A.T.C." INDICATES FEDERAL AVIATION ADMINISTRATION TECHNICAL CENTER.

THIS SHEET HAS BEEN DRAWN USING COMPUTER AIDED DRAFTING / DESIGN (CAD/D) AND WAS DONE UNDER THE SUPERVISION OF SAMUEL S. PREVITERA, P.L.S., NEW JERSEY PROFESSIONAL LAND SURVEYOR LICENSE NO. 38976, AND DATED DECEMBER 31, 2006.

TAX MAP
TOWNSHIP OF GALLOWAY
 ATLANTIC COUNTY, NEW JERSEY
 SCALE: 1" = 100' JANUARY 2007

DIXON ASSOCIATES
 313 E. JIMMIE LEEDS RD.,
 GALLOWAY, N.J. 08205

SAMUEL S. PREVITERA, P.L.S.
 N.J. LIC. No. 38976
 26 NORTH ROUTE 73, SUITE 200
 CEDAR BROOK, N.J. 08018