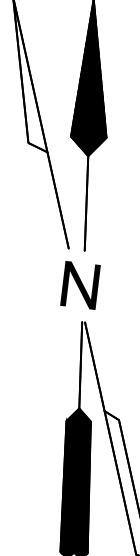
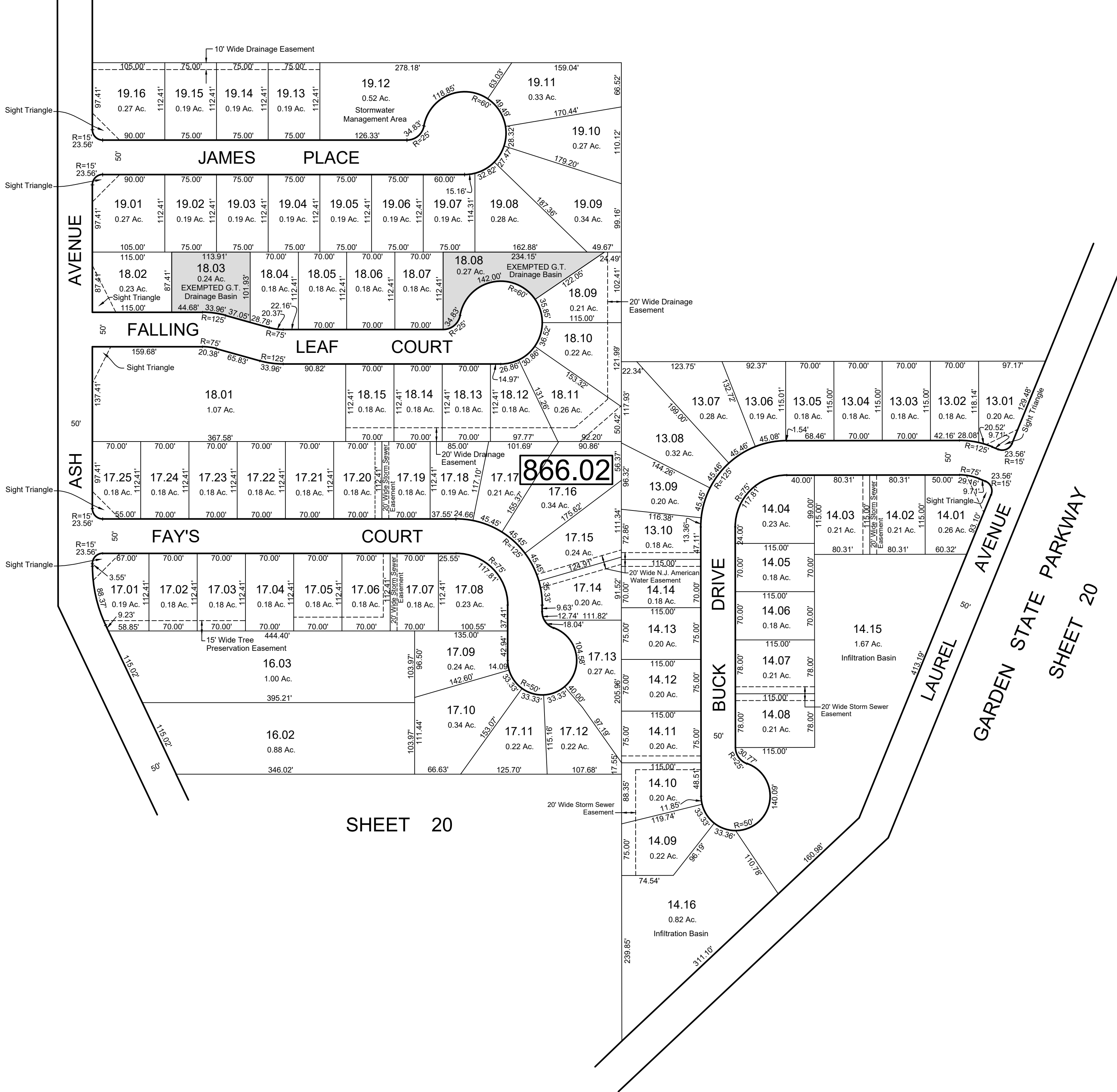


REVISIONS		
DATE	NAME	NO.
Nov. 15, 2012	Dixon Assoc.	1
Aug. 15, 2019	J.Boney NJ Lic #31264	2

SHEET 20.07



SHEET 20



SHEET 20

REVISIONS TO THIS MAP
HAVE BEEN MADE BY
DANIEL J. GALLETTA, P.L.S.
N.J. LIC. NO. 25050



DATE: 11/15/12

TAX MAP
TOWNSHIP OF GALLOWAY
ATLANTIC COUNTY, NEW JERSEY
SCALE: 1" = 100' MARCH 2005

DIXON ASSOCIATES
335 E. JIMMIE LEEDS RD.,
GALLOWAY, N.J. 08205

SAMUEL S. PREVITERA, P.L.S.
N.J. LIC. No. 38976
26 NORTH ROUTE 73, SUITE 200
CEDAR BROOK, N.J. 08018

THIS SHEET HAS BEEN DRAWN USING COMPUTER AIDED DRAFTING / DESIGN (CAD/D) AND WAS DONE UNDER THE SUPERVISION OF SAMUEL S. PREVITERA, P.L.S., NEW JERSEY PROFESSIONAL LAND SURVEYOR LICENSE NO. 38976, AND DATED DECEMBER 31, 2006.