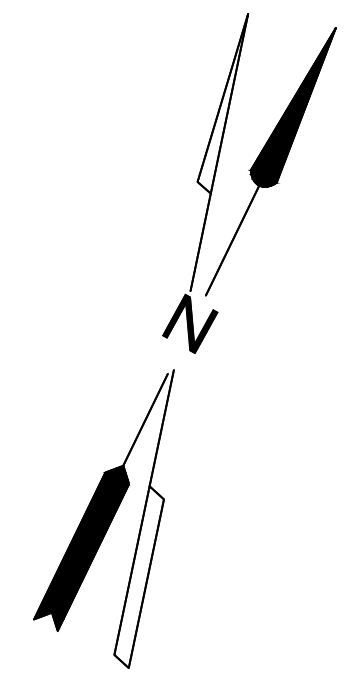
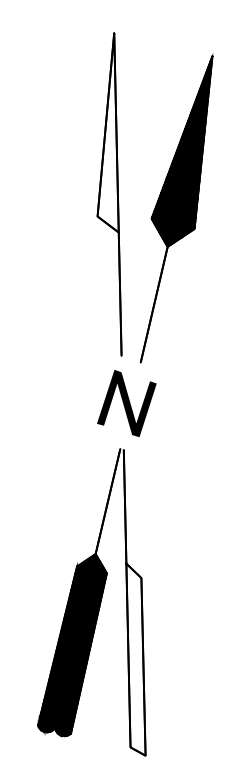
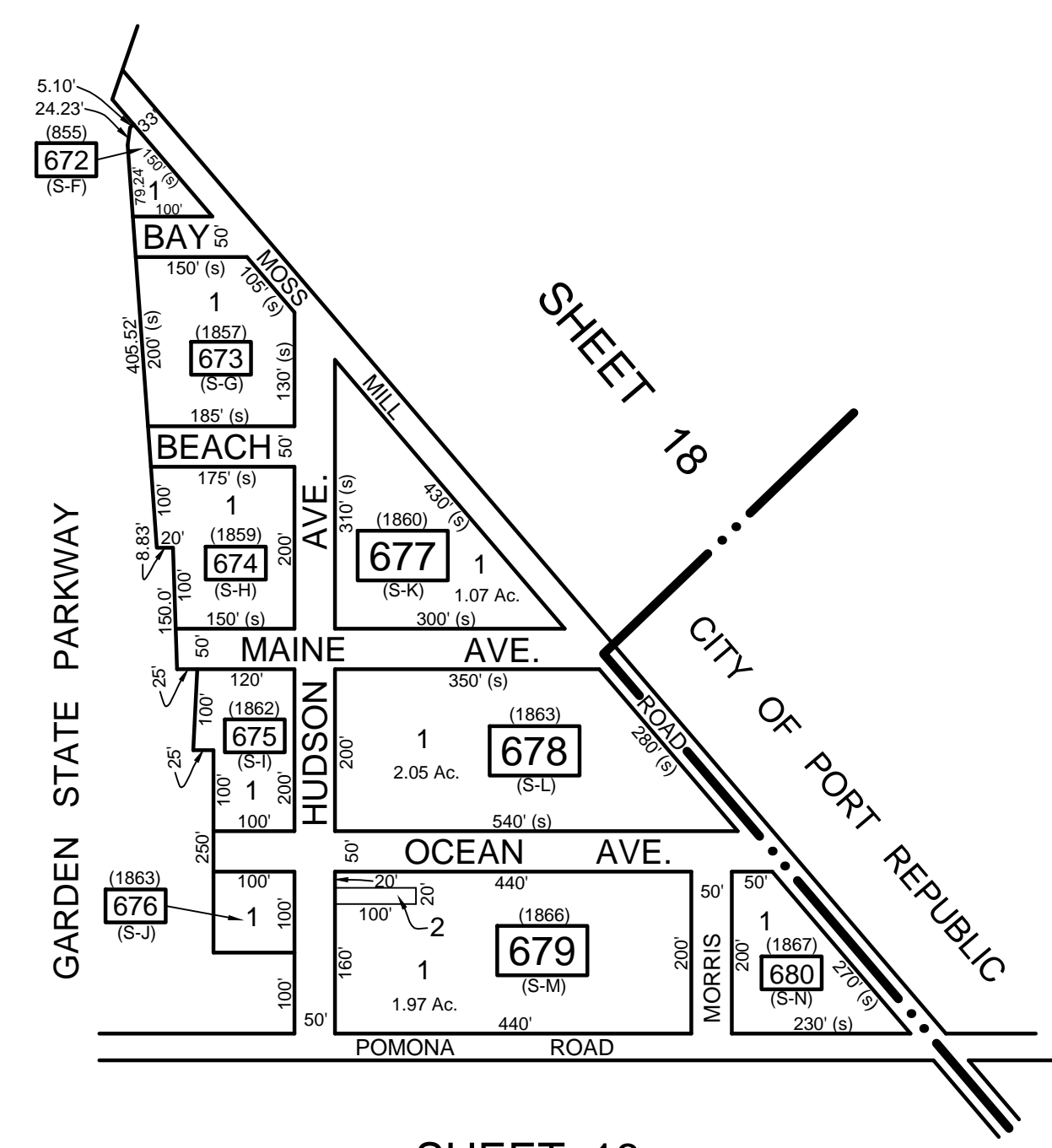
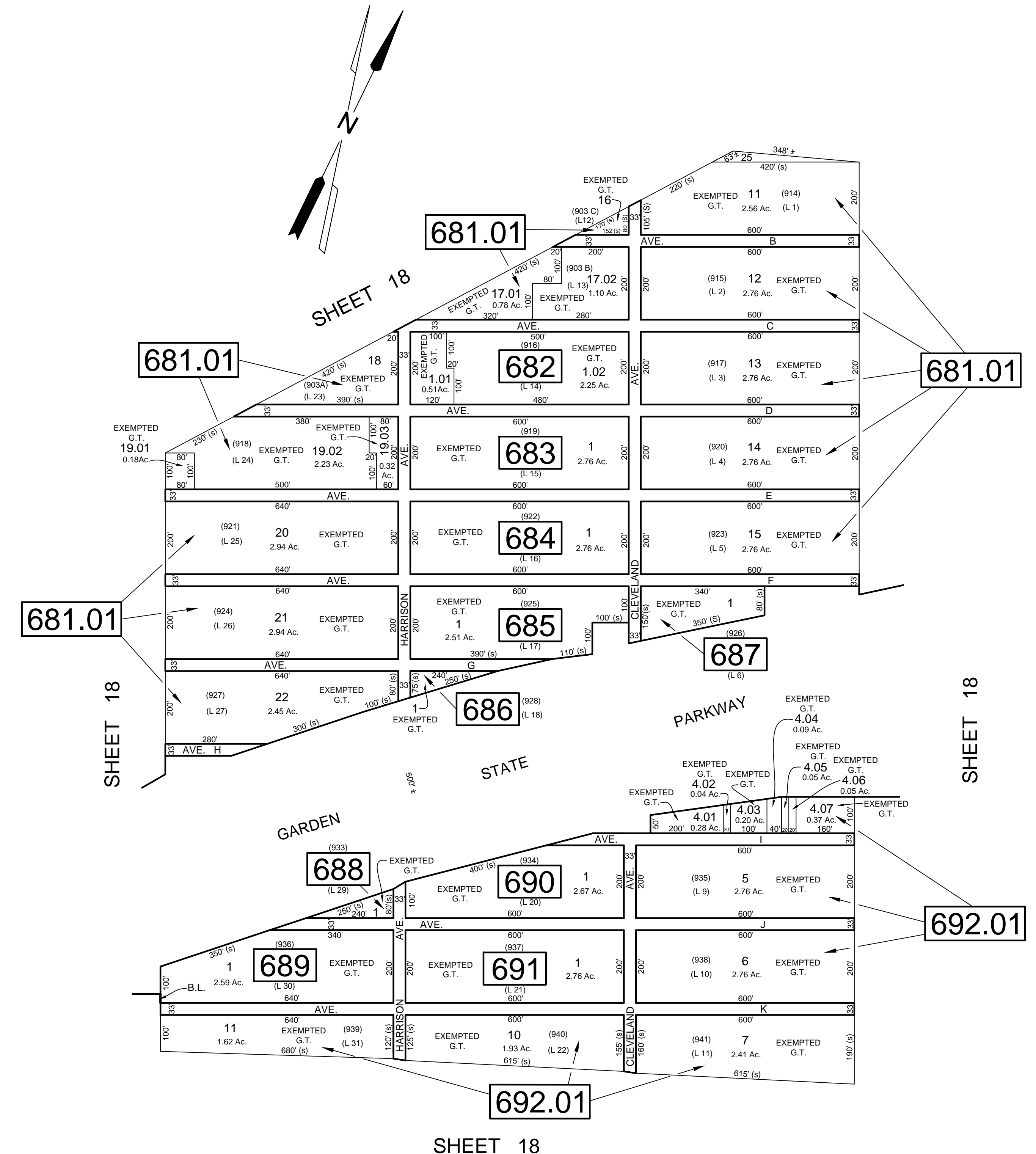


REVISIONS		
DATE	NAME	NO.
Nov. 15, 2012	Dixon Assoc	1



NOTE:
 LETTER "S" INDICATES NUMBERS ON MAP OF SEASHORE IMPROVEMENT CO. BY J. HECKLER
 LETTER "L" " " " " " " LAKEWOOD PARK BY MAYS LANDING IMP. CO.
 LETTERS "SP" " " " " " " SHORE PINES BY AMBASSADOR REALTY CO.
 LETTERS "G.T." INDICATES GALLOWAY TOWNSHIP OWNED PROPERTY.

REVISIONS TO THIS MAP
 HAVE BEEN MADE BY
DANIEL J. GALLETTA, P.L.S.
 N.J. LIC. NO. 25050

 DATE: 11/15/12

TAX MAP
 TOWNSHIP OF GALLOWAY
 ATLANTIC COUNTY, NEW JERSEY
 SCALE: 1" = 200'
 JANUARY 2007
SAMUEL S. PREVITERA, P.L.S.
 N.J. LIC. No. 38976
 26 NORTH ROUTE 73, SUITE 200
 CEDAR BROOK, N.J. 08018

THIS SHEET HAS BEEN DRAWN USING COMPUTER AIDED DRAFTING / DESIGN (CAD/D) AND WAS DONE UNDER THE SUPERVISION OF SAMUEL S. PREVITERA, P.L.S., NEW JERSEY PROFESSIONAL LAND SURVEYOR LICENSE NO. 38976, AND DATED DECEMBER 31, 2006.