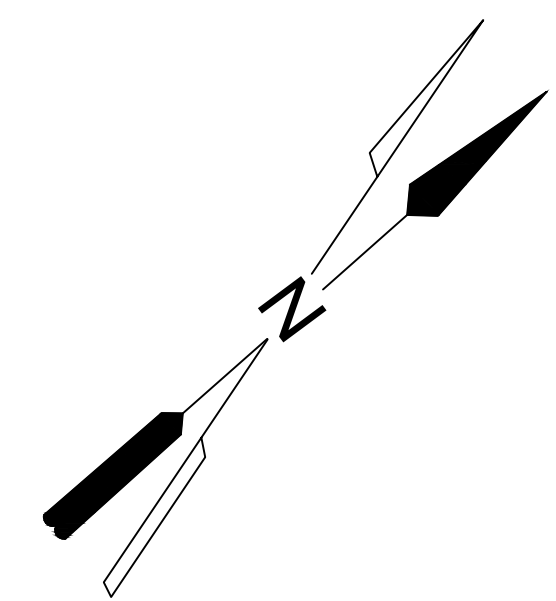
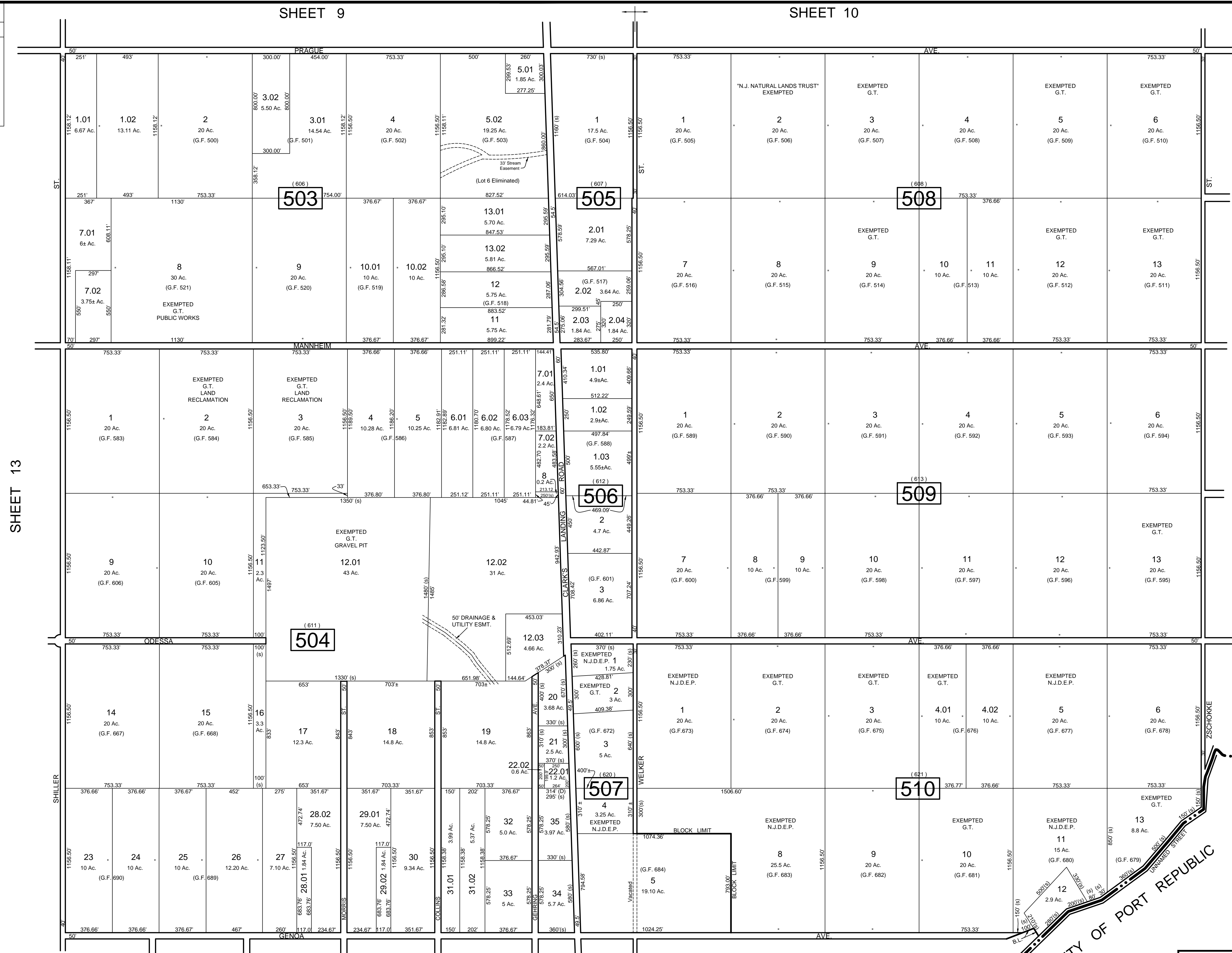


REVISIONS		
DATE	NAME	NO.
Aug. 2008	Dixon Assoc.	1



SHEET 13

SHEET 15

SHEET 19

NOTE:  
 LETTERS "G.F." INDICATES NUMBER ON MAP OF GLOUCESTER FARM & TOWN ASSOCIATION  
 LETTERS "G.T." INDICATES GALLOWAY TOWNSHIP OWNED PROPERTY.

THIS SHEET HAS BEEN DRAWN USING COMPUTER AIDED DRAFTING / DESIGN (CAD/D) AND WAS DONE UNDER THE SUPERVISION OF SAMUEL S. PREVITERA, P.L.S., NEW JERSEY PROFESSIONAL LAND SURVEYOR LICENSE NO. 38976, AND DATED DECEMBER 31, 2006.

**TAX MAP**  
 TOWNSHIP OF GALLOWAY  
 ATLANTIC COUNTY, NEW JERSEY  
 SCALE: 1" = 400'  
 JANUARY 2007  
 SAMUEL S. PREVITERA, P.L.S.  
 N.J. LIC. No. 38976  
 26 NORTH ROUTE 73, SUITE 200  
 CEDAR BROOK, N.J. 08018