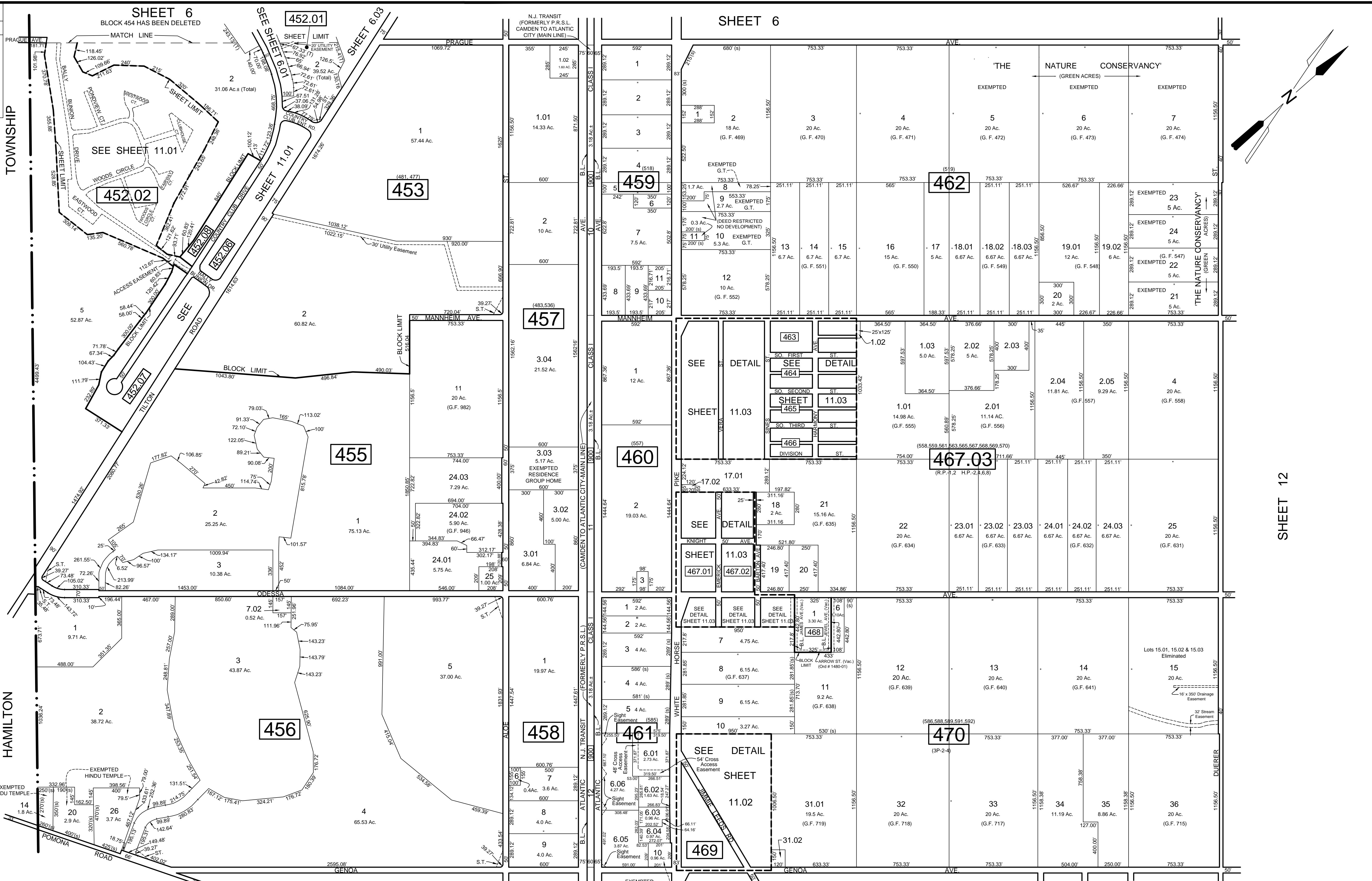


REVISIONS			
DATE	NAME	NO.	
Aug. 2008	Dixon Assoc.	1	
Nov. 15, 2010	Dixon Assoc.	2	



NOTE:
 LETTERS "P.P." INDICATES NUMBER ON MAP OF "POMONA PARK" BY LOUISA A. SINES
 LETTERS "H.P." INDICATES NUMBER ON MAP OF "HARMONY PARK" ESTATES BY ARTHUR GERSBON
 LETTER "P" INDICATES NUMBER ON MAP OF "POMONA" BY C.P. GEHRING
 LETTER "2P" INDICATES NUMBER ON MAP OF "POMONA 2nd EXT." BY G.P. GEHRING
 LETTERS "3P" INDICATES NUMBER ON MAP OF "POMONA 3rd EXT." BY G.P. GEHRING
 LETTERS "G.T." INDICATES GALLOWAY TOWNSHIP OWNED PROPERTY.

SHEET 16

REVISIONS TO THIS MAP
 HAVE BEEN MADE BY
DANIEL J. GALLETTA, P.L.S.
 N.J. LIC. NO. 25050

DATE: 11/15/12

THIS SHEET HAS BEEN DRAWN USING COMPUTER AIDED DRAFTING / DESIGN (CAD/D)
 AND WAS DONE UNDER THE SUPERVISION OF SAMUEL S. PREVITERA, P.L.S., NEW JERSEY
 PROFESSIONAL LAND SURVEYOR LICENSE NO. 36976, AND DATED DECEMBER 31, 2006.

TAX MAP
 TOWNSHIP OF GALLOWAY
 ATLANTIC COUNTY NEW JERSEY
 SCALE: 1" = 400' JANUARY 2007

SAMUEL S. PREVITERA, P.L.S.
 N.J. LIC. No. 38976

26 NORTH ROUTE 73, SUITE 200
 CEDAR BROOK, N.J. 08018