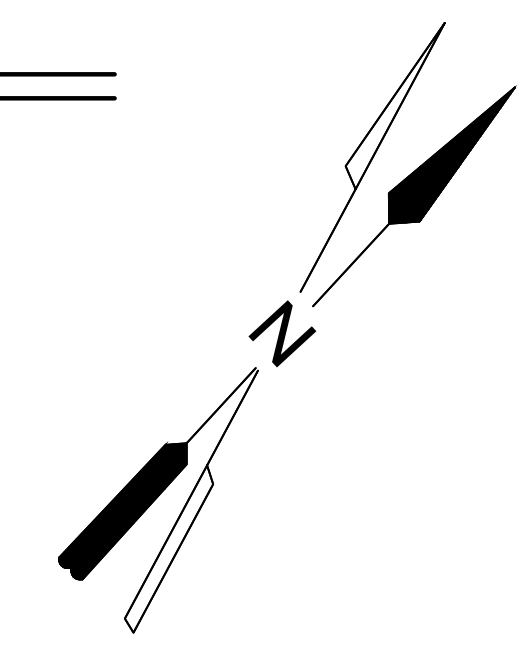
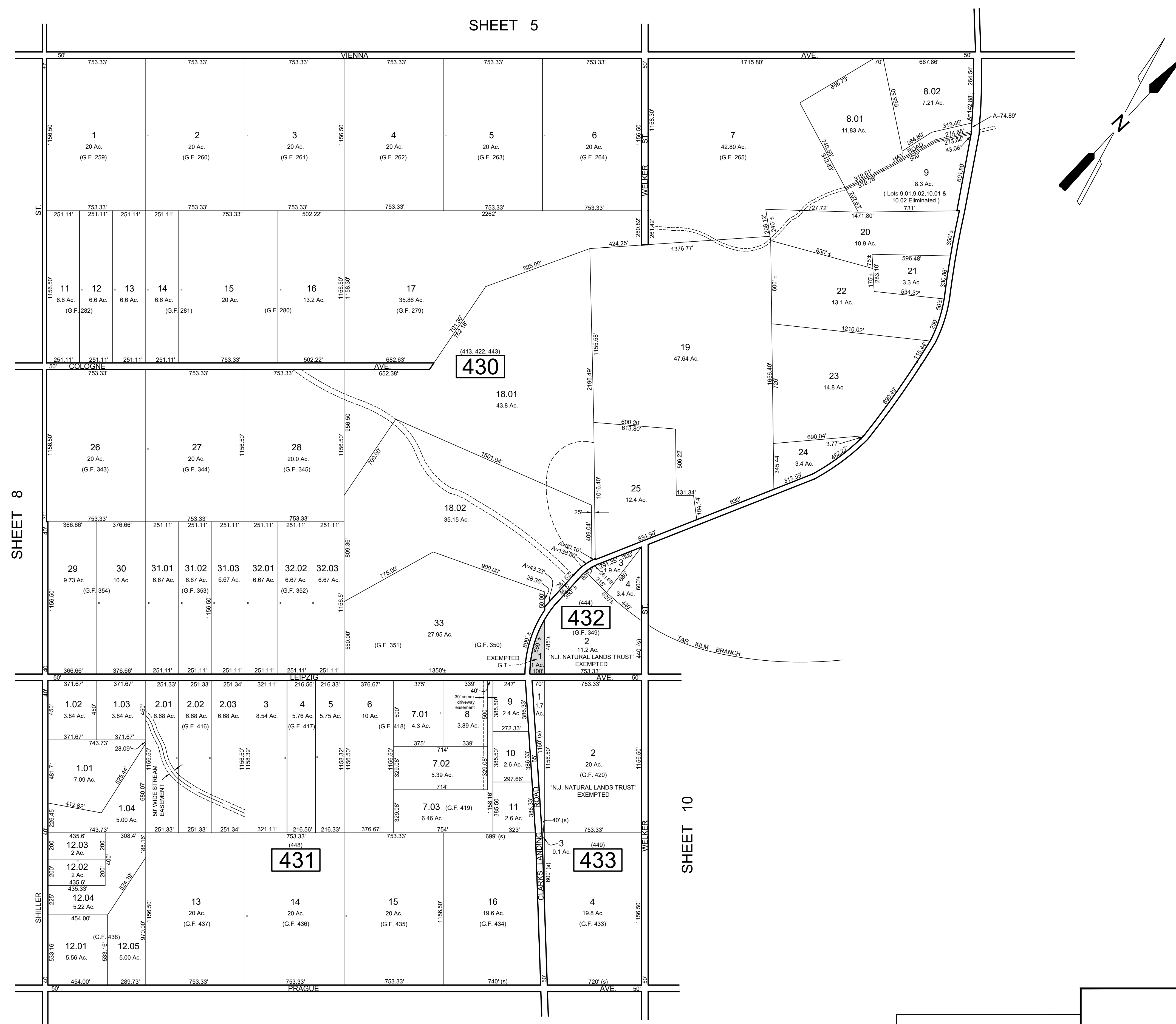


REVISIONS		
DATE	NAME	NO.
Nov. 15, 2012	Dixon Assoc.	1
Aug. 15, 2019	J.Boney NJ Lic #31264	2



REVISIONS TO THIS MAP
HAVE BEEN MADE BY
DANIEL J. GALLETTA, P.L.S.
N.J. LIC. NO. 25050
DIXON ASSOCIATES
ENGINEERING, LLC
STATE AND LEEDS ROAD SUITE 200 GALLOWAY, NJ 08055
DATE: 11/15/12

TAX MAP
TOWNSHIP OF GALLOWAY
ATLANTIC COUNTY, NEW JERSEY
SCALE: 1" = 400' JANUARY 2007
SAMUEL S. PREVITERA, P.L.S.
N.J. LIC. NO. 38976
26 NORTH ROUTE 73, SUITE 200
CEDAR BROOK, N.J. 08018

NOTE:
LETTERS "G.F." INDICATES NUMBER ON MAP OF GLOUCESTER FARM & TOWN ASSOCIATION.
LETTERS "G.T." INDICATES GALLOWAY TOWNSHIP OWNED PROPERTY.

THIS SHEET HAS BEEN DRAWN USING COMPUTER AIDED DRAFTING / DESIGN (CAD/D) AND WAS DONE UNDER THE SUPERVISION OF SAMUEL S. PREVITERA, P.L.S., NEW JERSEY PROFESSIONAL LAND SURVEYOR LICENSE NO. 38976, AND DATED DECEMBER 31, 2006.