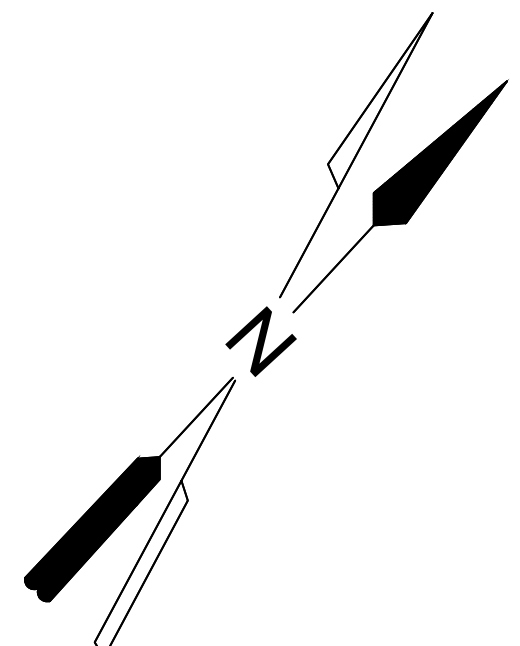
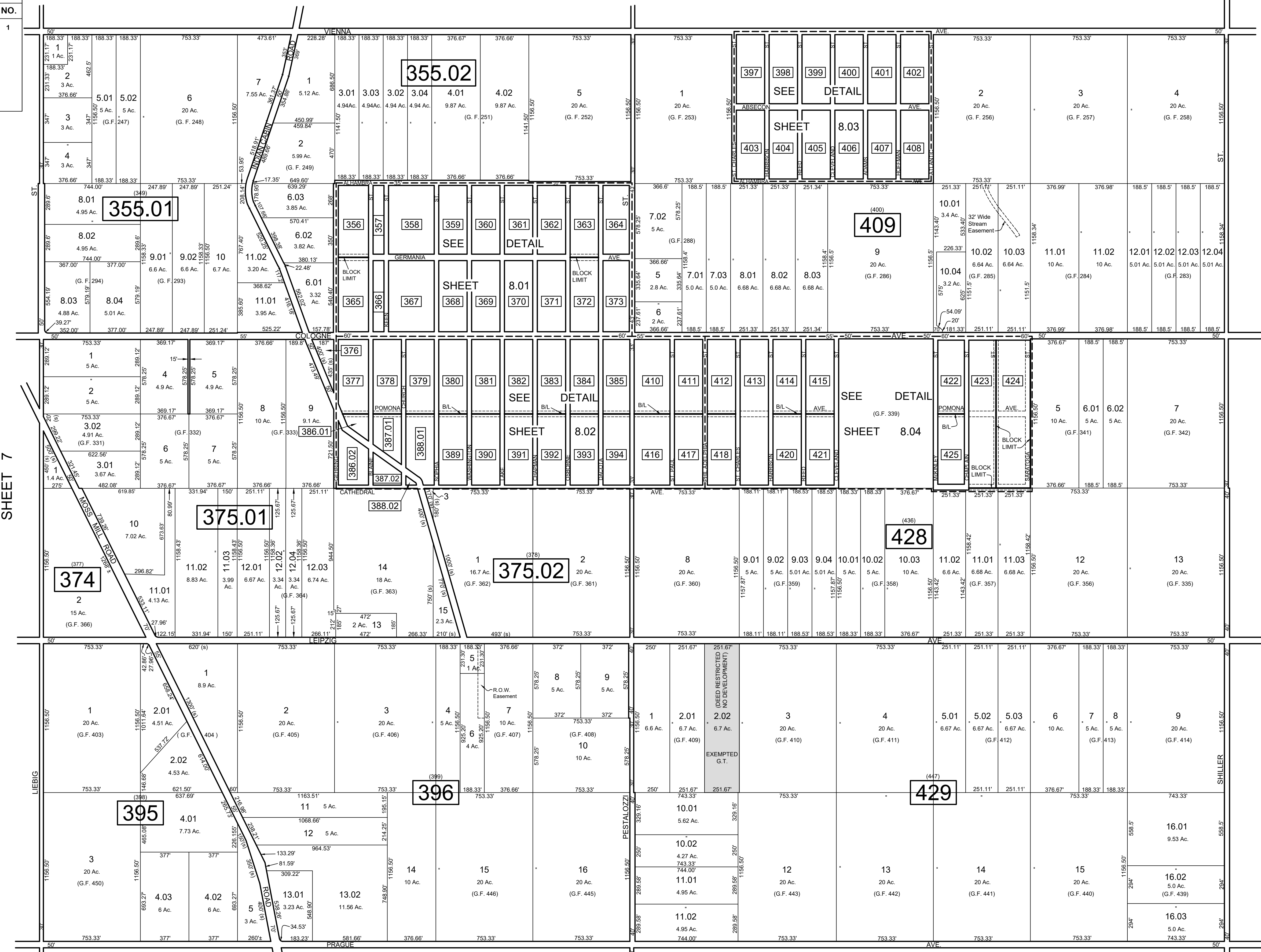


REVISIONS		
DATE	NAME	NO.
8-15-19	J. Bonney NJ Lic #31264	1

SHEET 4



SHEET 7

SHEET 9

**LEGEND**

BLOCK	SHEET
356-373	8.01
377-394	8.02
397-408	8.03
410-411	8.02
412-415	8.04
416-417	8.02
418-427	8.04

SHEET 13

**TAX MAP**  
**TOWNSHIP OF GALLOWAY**  
 ATLANTIC COUNTY, NEW JERSEY  
 SCALE: 1" = 400'      JANUARY 2007  
**SAMUEL S. PREVITERA, P.L.S.**  
 N.J. LIC. NO. 38976  
 26 NORTH ROUTE 73, SUITE 200  
 CEDAR BROOK, N.J. 08018

THIS SHEET HAS BEEN DRAWN USING COMPUTER AIDED DRAFTING / DESIGN (CAD/D) AND WAS DONE UNDER THE SUPERVISION OF SAMUEL S. PREVITERA, P.L.S., NEW JERSEY PROFESSIONAL LAND SURVEYOR LICENSE NO. 38976, AND DATED DECEMBER 31, 2006.

NOTE: LETTERS "G.F." INDICATES NUMBERS ON MAP OF GLOUCESTER FARM & TOWN ASSOCIATION. LETTERS "G.T." INDICATES GALLOWAY TOWNSHIP OWNED PROPERTY.