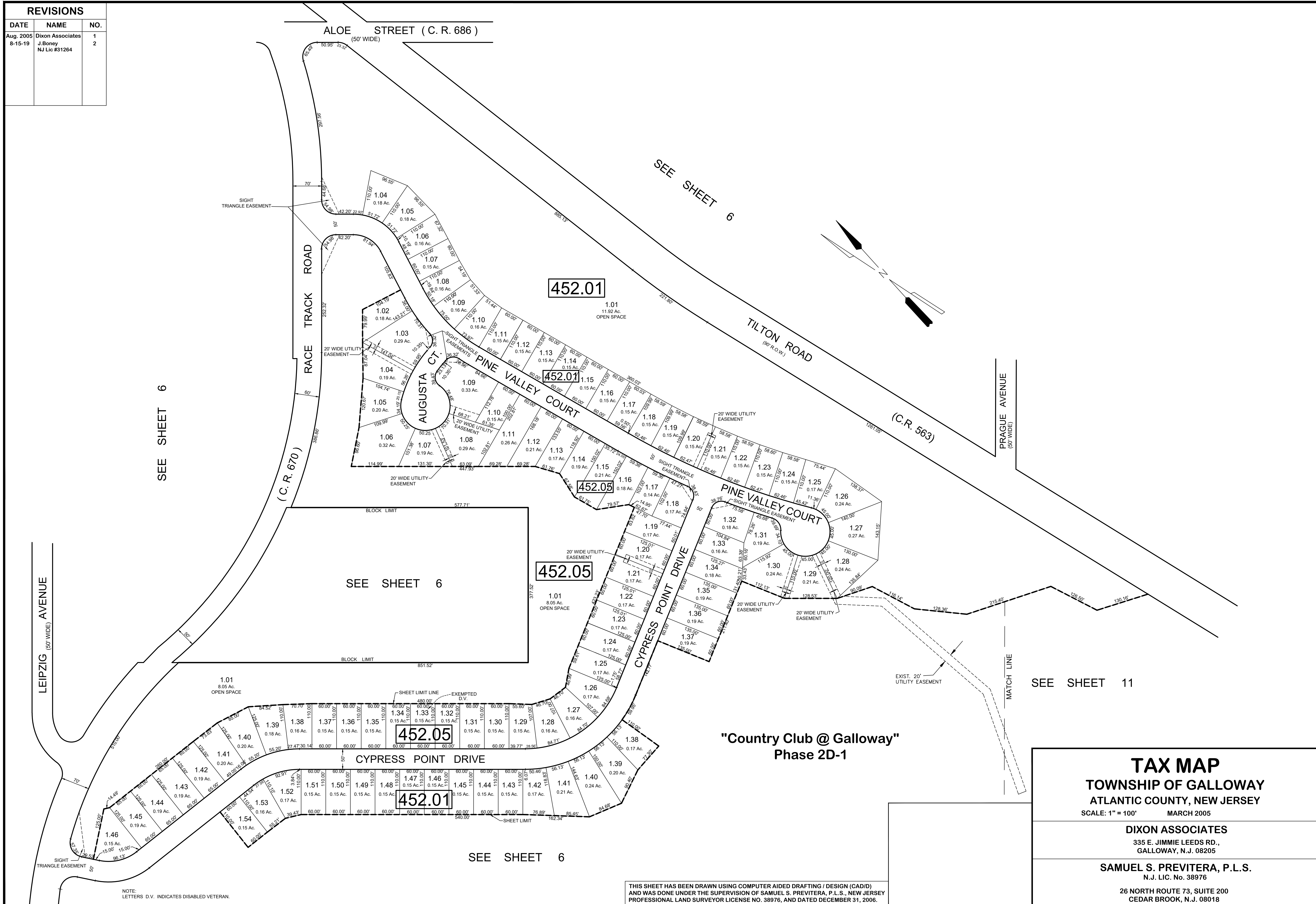


REVISIONS		
DATE	NAME	NO.
Aug. 2006	Dixon Associates	1
8-15-19	J. Boney NJ Lic #31264	2



NOTE:
LETTERS D.V. INDICATES DISABLED VETERAN.

THIS SHEET HAS BEEN DRAWN USING COMPUTER AIDED DRAFTING / DESIGN (CAD/D) AND WAS DONE UNDER THE SUPERVISION OF SAMUEL S. PREVITERA, P.L.S., NEW JERSEY PROFESSIONAL LAND SURVEYOR LICENSE NO. 38976, AND DATED DECEMBER 31, 2006.

TAX MAP
TOWNSHIP OF GALLOWAY
ATLANTIC COUNTY, NEW JERSEY
 SCALE: 1" = 100' MARCH 2005

DIXON ASSOCIATES
 335 E. JIMMIE LEEDS RD.,
 GALLOWAY, N.J. 08205

SAMUEL S. PREVITERA, P.L.S.
 N.J. LIC. No. 38976

26 NORTH ROUTE 73, SUITE 200
 CEDAR BROOK, N.J. 08018