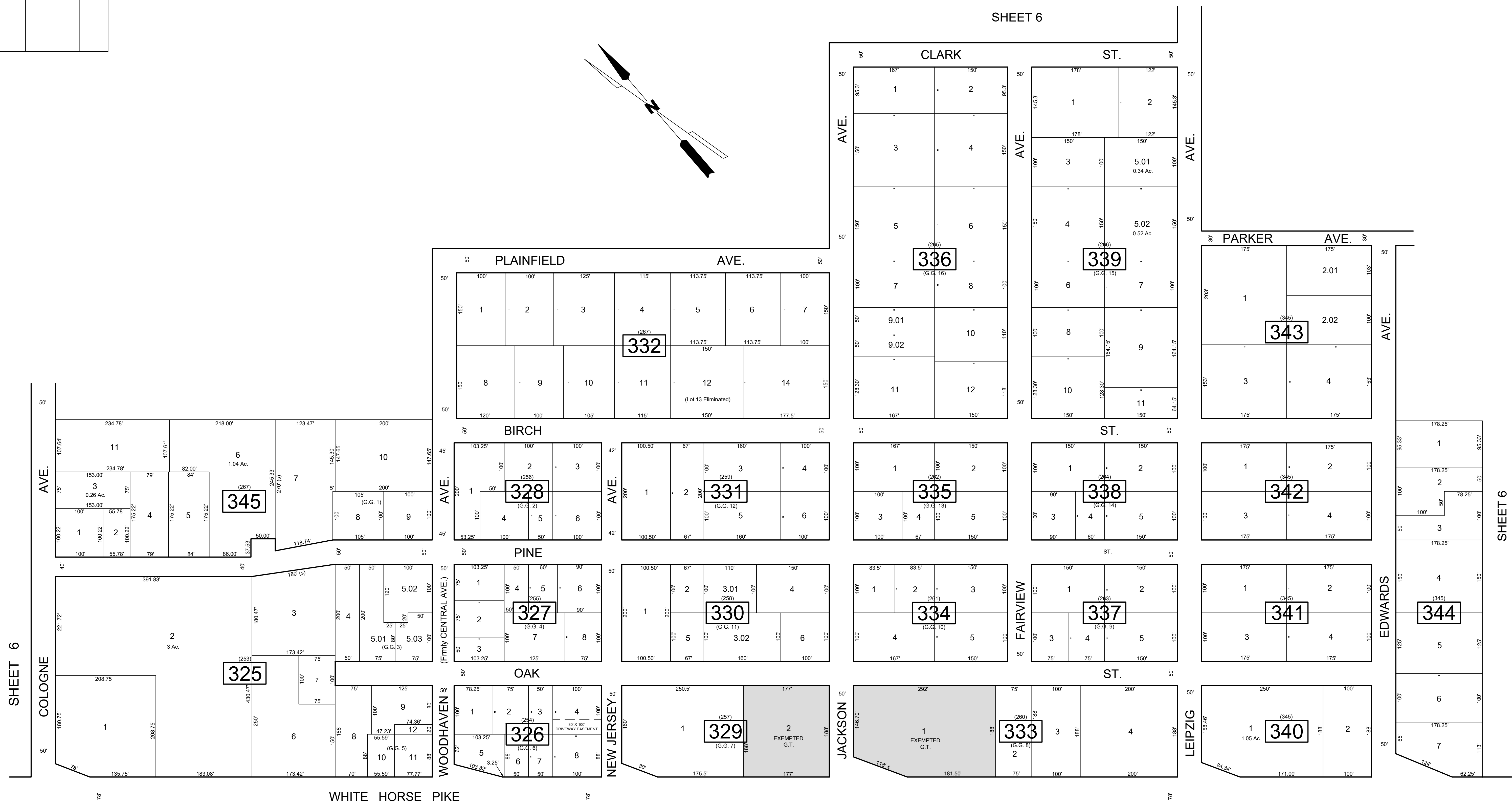
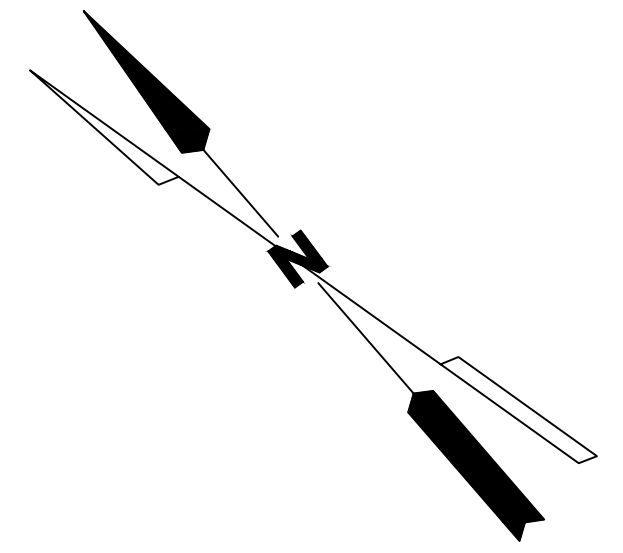


REVISIONS		
DATE	NAME	NO.
Aug. 2008	Dixon Assoc.	1
8-15-19	J.Boney NJ Lic #31264	2

SHEET 6



SHEET 6

SHEET 6

NOTE:
LETTERS "G.G." INDICATES NUMBER ON MAP OF "GERMANIA GARDENS".

SHEET 6

THIS SHEET IS AN AUTOCAD COMPUTER GENERATED VERSION OF THE EXISTING APPROVED TAX MAPS AND WAS DONE UNDER THE SUPERVISION OF SAMUEL S. PREVITERA, P.L.S., NEW JERSEY PROFESSIONAL LAND SURVEYOR LICENSE NO. 38976, AND DATED DECEMBER 31, 2006.

TAX MAP
TOWNSHIP OF GALLOWAY
 ATLANTIC COUNTY, NEW JERSEY
 SCALE: 1" = 100' JANUARY 2007
 SAMUEL S. PREVITERA, P.L.S.
 N.J. LIC. No. 38976
 26 NORTH ROUTE 73, SUITE 200
 CEDAR BROOK, N.J. 08018