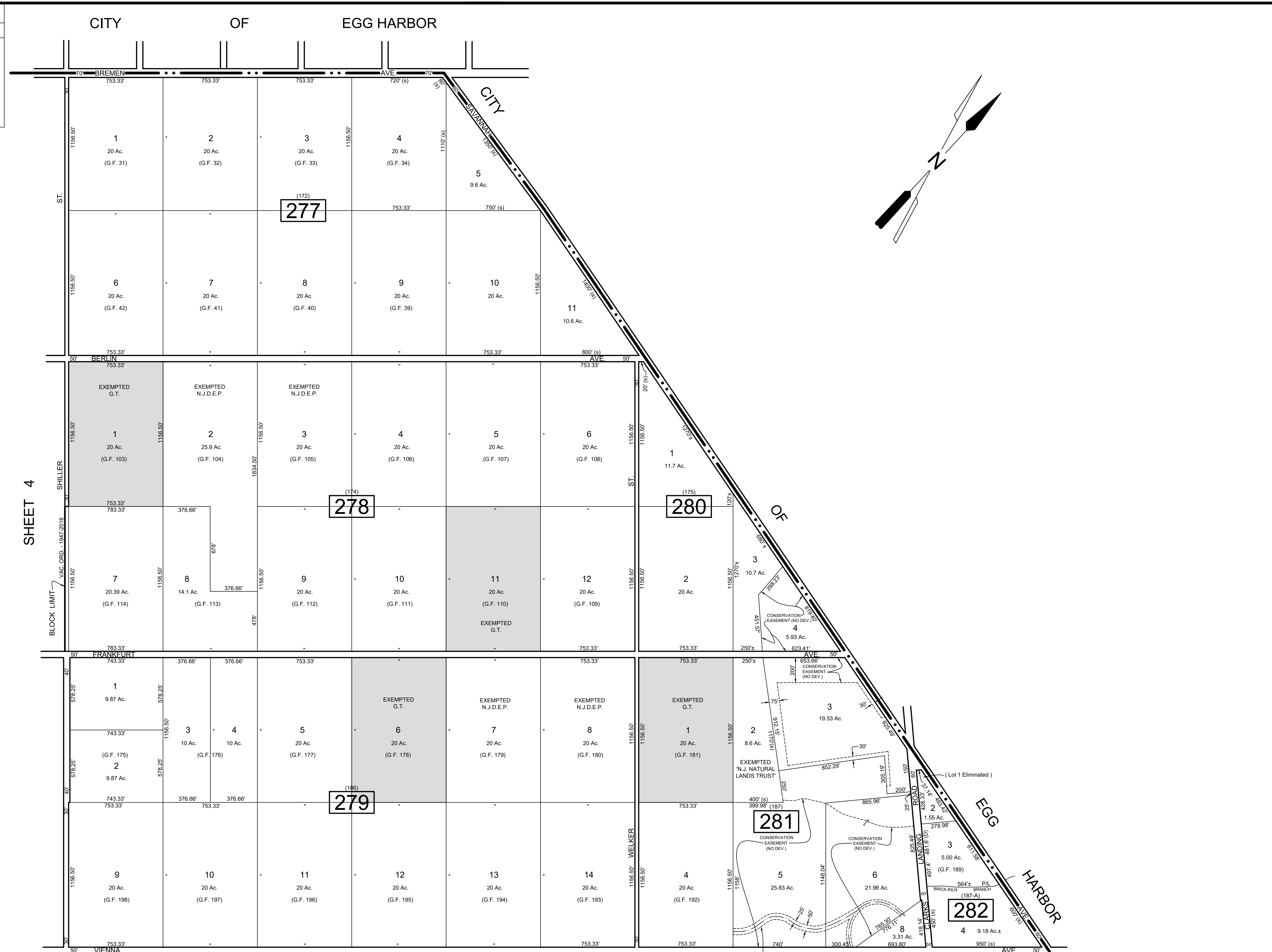


REVISIONS		
DATE	NAME	NO.
Aug. 2008	Dixon Assoc.	1
Nov. 15, 2012	Dixon Assoc.	2
Aug. 15, 2019	J. Boney NJ Lic #31264	3



SHEET 4

SHEET 9

SHEET 10

NOTE:
 LETTERS G.F. INDICATES NUMBER ON MAP OF GLOUCESTER FARM & TOWN ASSOCIATION.
 LETTERS G.T. INDICATES GALLOWAY TOWNSHIP OWNED PROPERTY.

THIS SHEET HAS BEEN DRAWN USING COMPUTER AIDED DRAFTING / DESIGN (CAD/D) AND WAS DONE UNDER THE SUPERVISION OF SAMUEL S. PREVITERA, P.L.S., NEW JERSEY PROFESSIONAL LAND SURVEYOR LICENSE NO. 38976, AND DATED DECEMBER 31, 2006.

REVISIONS TO THIS MAP
 HAVE BEEN MADE BY
DANIEL J. GALLETTA, P.L.S.
 N.J. LIC. NO. 25050

DATE: 11/15/12

TAX MAP
TOWNSHIP OF GALLOWAY
 ATLANTIC COUNTY, NEW JERSEY
 SCALE: 1" = 400' JANUARY 2007

SAMUEL S. PREVITERA, P.L.S.
 N.J. LIC. No. 38976
 26 NORTH ROUTE 73, SUITE 200
 CEDAR BROOK, N.J. 08018