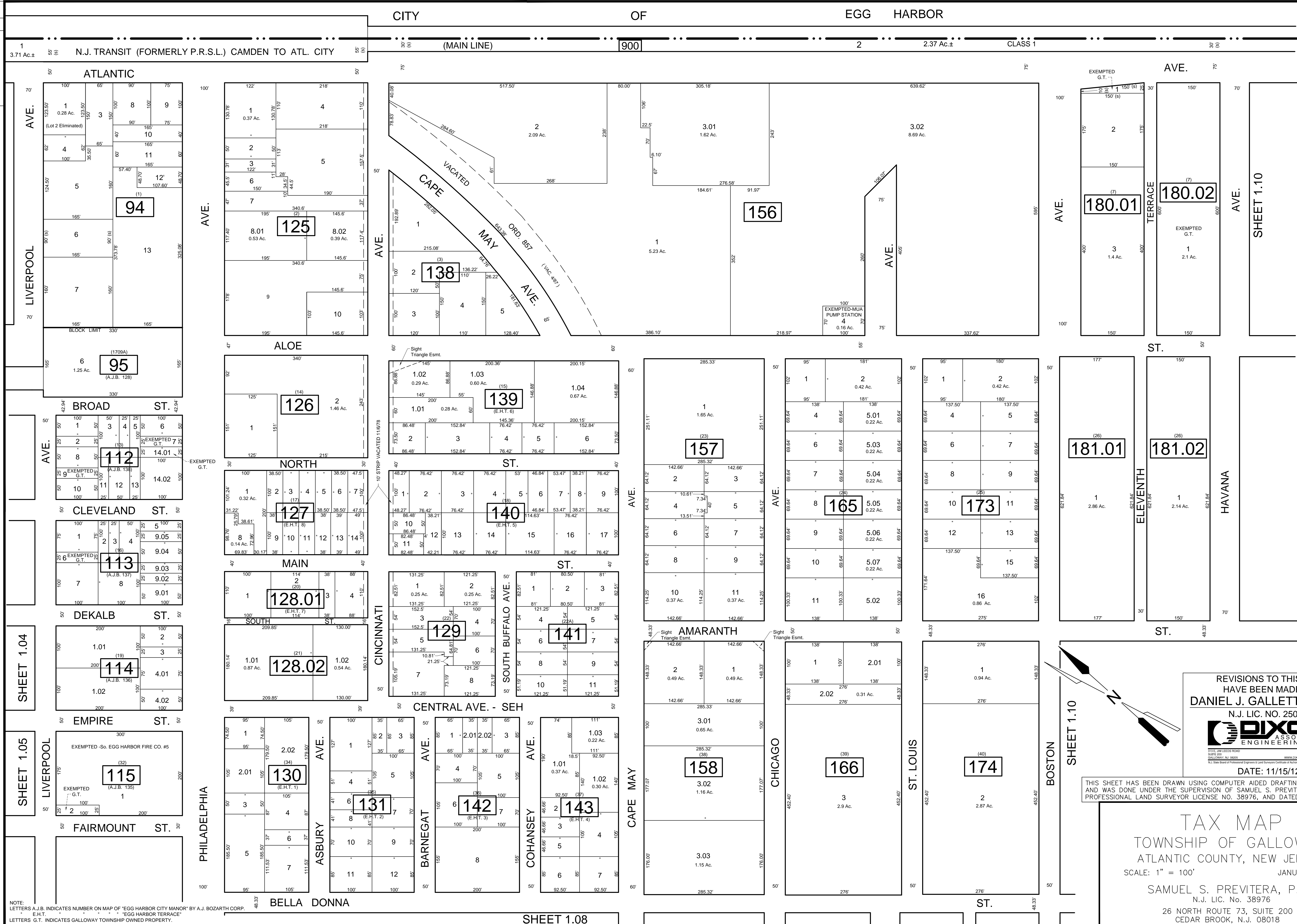


REVISIONS		
DATE	NAME	NO.
Aug. 2008	Dixon Assoc	1
Nov. 15, 2010	Dixon Assoc	2



NOTE:
 LETTERS A, J, B, INDICATES NUMBER ON MAP OF "EGG HARBOR CITY MANOR" BY A. J. BOZARTH CORP.
 E, H, T, "EGG HARBOR TERRACE"
 LETTERS G, T, INDICATES GALLOWAY TOWNSHIP OWNED PROPERTY.

REVISIONS TO THIS MAP
 HAVE BEEN MADE BY
DANIEL J. GALLETTA, P.L.S.
 N.J. LIC. NO. 25050
DIXON ASSOCIATES
 ENGINEERING, LLC
STATE AND LEES ROAD
 SUITE 200
 GALLOWAY, NJ 08042
 PHONE: 609-667-7100
 FAX: 609-667-7101
 WWW.DIXONASSOCIATES.COM
 DATE: 11/15/12

THIS SHEET HAS BEEN DRAWN USING COMPUTER AIDED DRAFTING / DESIGN (CAD/D) AND WAS DONE UNDER THE SUPERVISION OF SAMUEL S. PREVITERA, P.L.S., NEW JERSEY PROFESSIONAL LAND SURVEYOR LICENSE NO. 38976, AND DATED DECEMBER 31, 2006.

TAX MAP
 TOWNSHIP OF GALLOWAY
 ATLANTIC COUNTY, NEW JERSEY
 SCALE: 1" = 100'
 JANUARY 2007
SAMUEL S. PREVITERA, P.L.S.
 N.J. LIC. No. 38976
 26 NORTH ROUTE 73, SUITE 200
 CEDAR BROOK, N.J. 08018