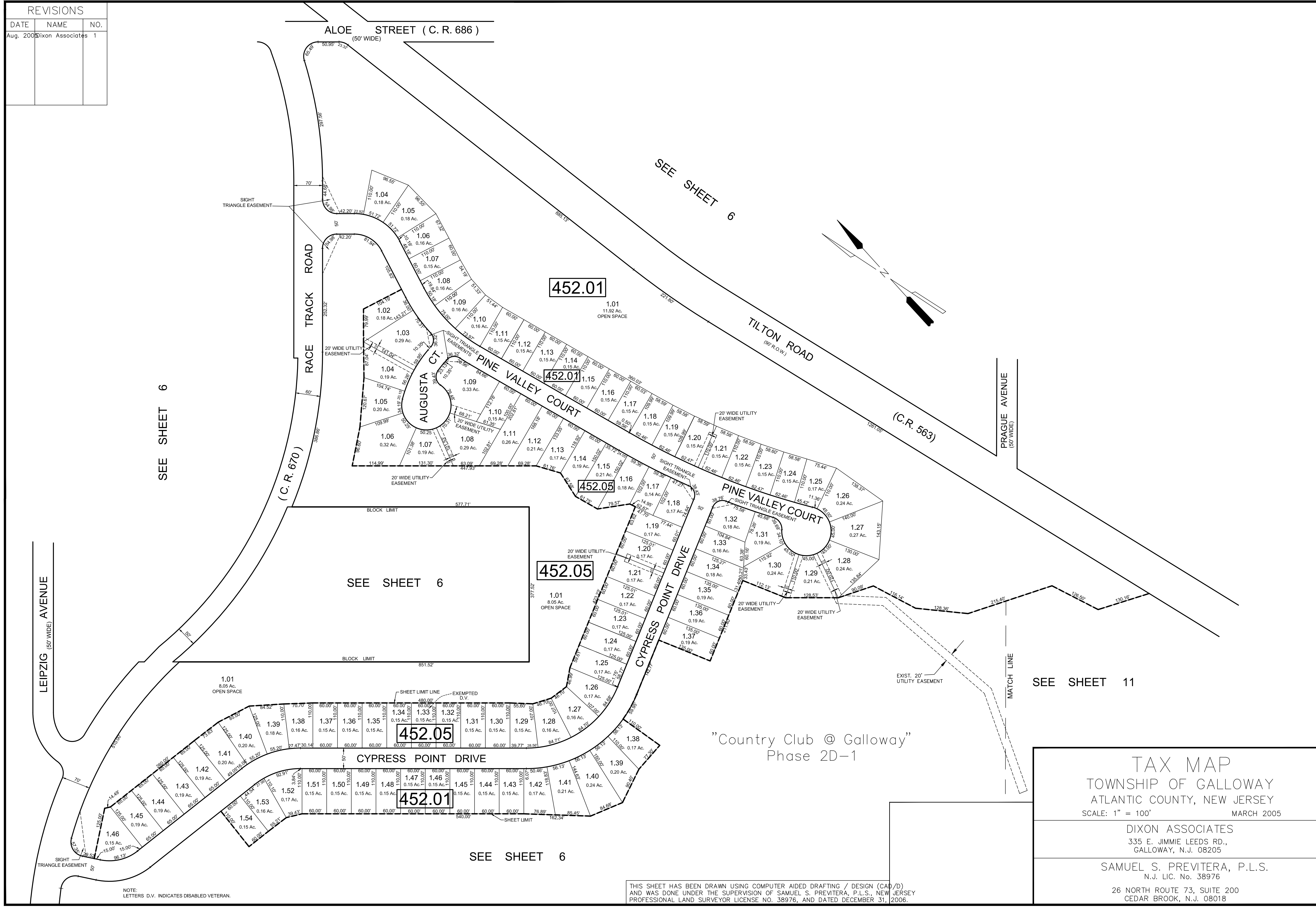


REVISIONS		
DATE	NAME	NO.
Aug. 2006	Dixon Associates	1



SEE SHEET 6

SEE SHEET 6

SEE SHEET 6

SEE SHEET 11

SEE SHEET 6

NOTE:  
LETTERS D.V. INDICATES DISABLED VETERAN.

THIS SHEET HAS BEEN DRAWN USING COMPUTER AIDED DRAFTING / DESIGN (CAD/D) AND WAS DONE UNDER THE SUPERVISION OF SAMUEL S. PREVITERA, P.L.S., NEW JERSEY PROFESSIONAL LAND SURVEYOR LICENSE NO. 38976, AND DATED DECEMBER 31, 2006.

TAX MAP  
TOWNSHIP OF GALLOWAY  
ATLANTIC COUNTY, NEW JERSEY  
SCALE: 1" = 100' MARCH 2005

DIXON ASSOCIATES  
335 E. JIMMIE LEEDS RD.,  
GALLOWAY, N.J. 08205

SAMUEL S. PREVITERA, P.L.S.  
N.J. LIC. No. 38976

26 NORTH ROUTE 73, SUITE 200  
CEDAR BROOK, N.J. 08018