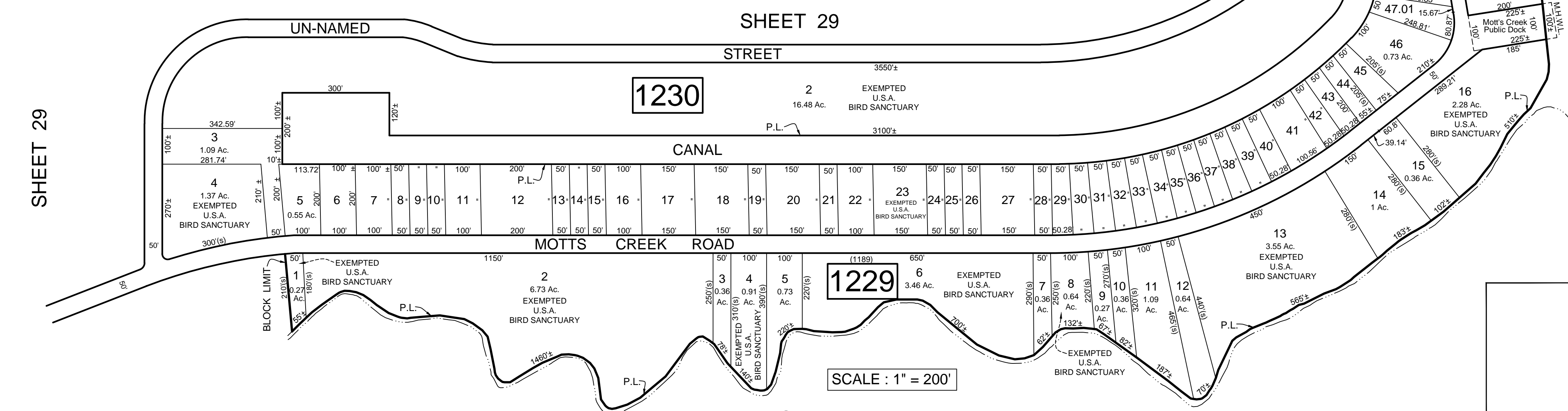
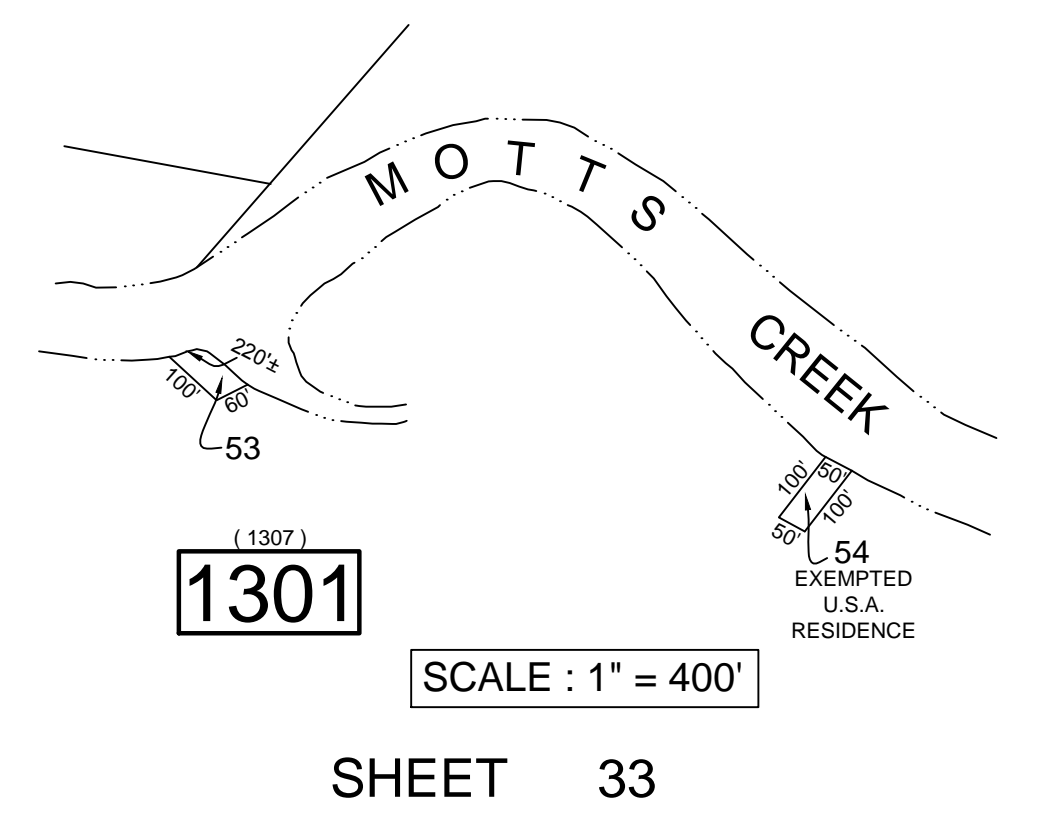
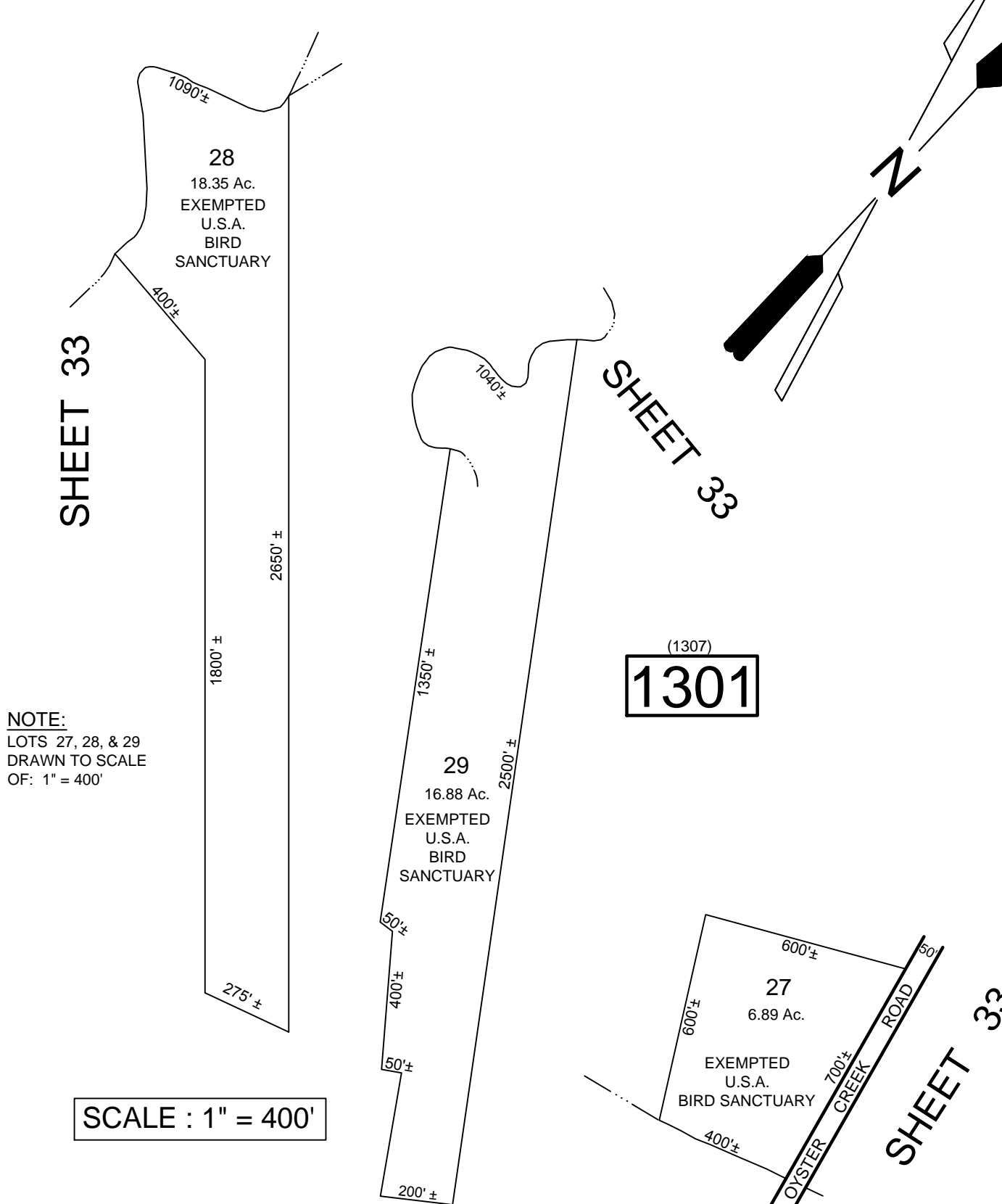
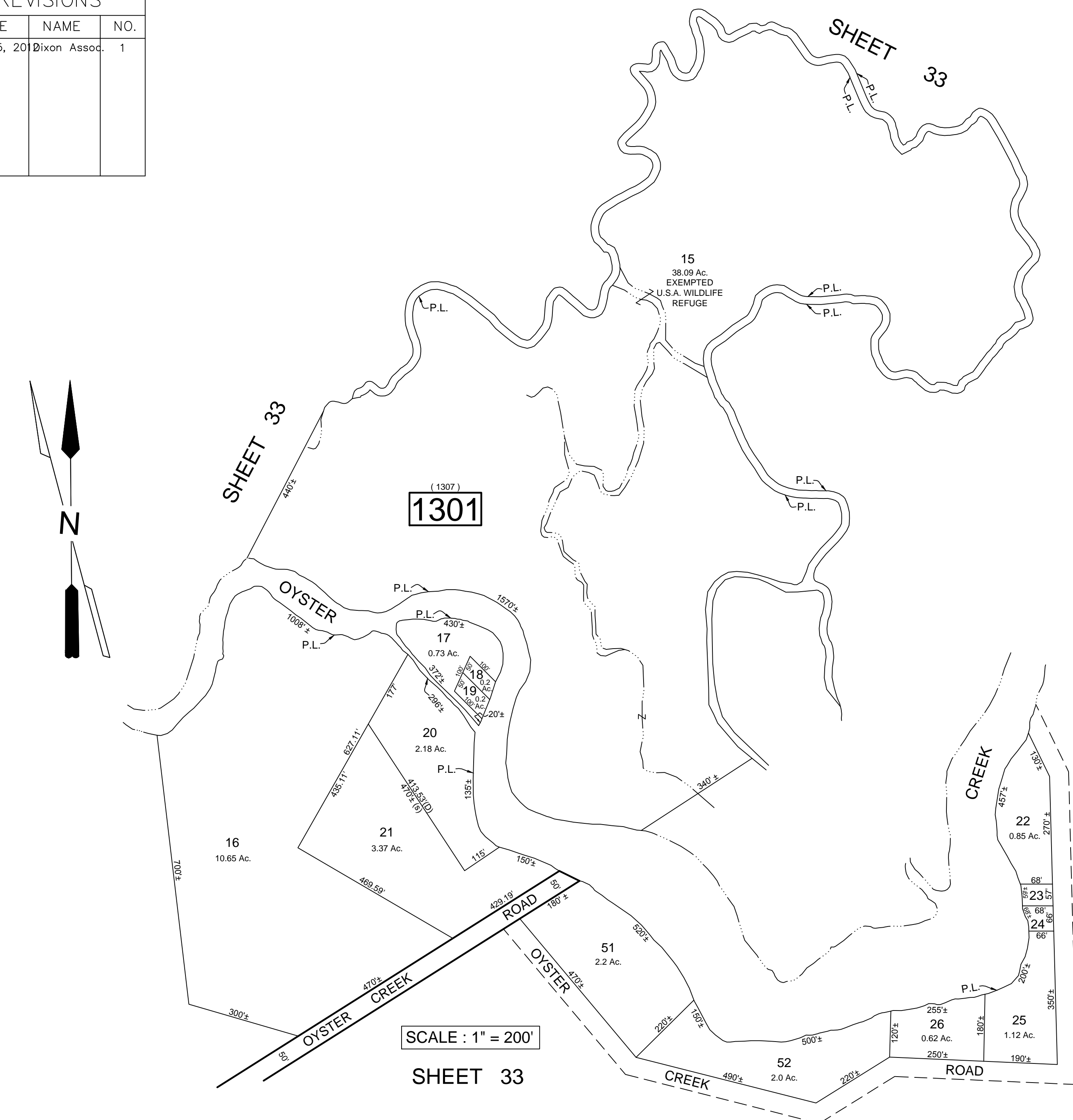


REVISIONS		
DATE	NAME	NO.
Nov. 15, 2012	Dixon Assoc.	1



REVISIONS TO THIS MAP
HAVE BEEN MADE BY
DANIEL J. GALLETTA, P.L.S.
N.J. LIC. NO. 25050
DIXON ASSOCIATES
ENGINEERING, LLC
DATE: 11/15/12

TAX MAP
TOWNSHIP OF GALLOWAY
ATLANTIC COUNTY, NEW JERSEY
SCALE: AS NOTED JANUARY 2007
SAMUEL S. PREVITERA, P.L.S.
N.J. LIC. No. 38976
26 NORTH ROUTE 73, SUITE 200
CEDAR BROOK, N.J. 08018

THIS SHEET HAS BEEN DRAWN USING COMPUTER AIDED DRAFTING / DESIGN (CAD/D) AND WAS DONE UNDER THE SUPERVISION OF SAMUEL S. PREVITERA, P.L.S., NEW JERSEY PROFESSIONAL LAND SURVEYOR LICENSE NO. 38976, AND DATED DECEMBER 31, 2006.