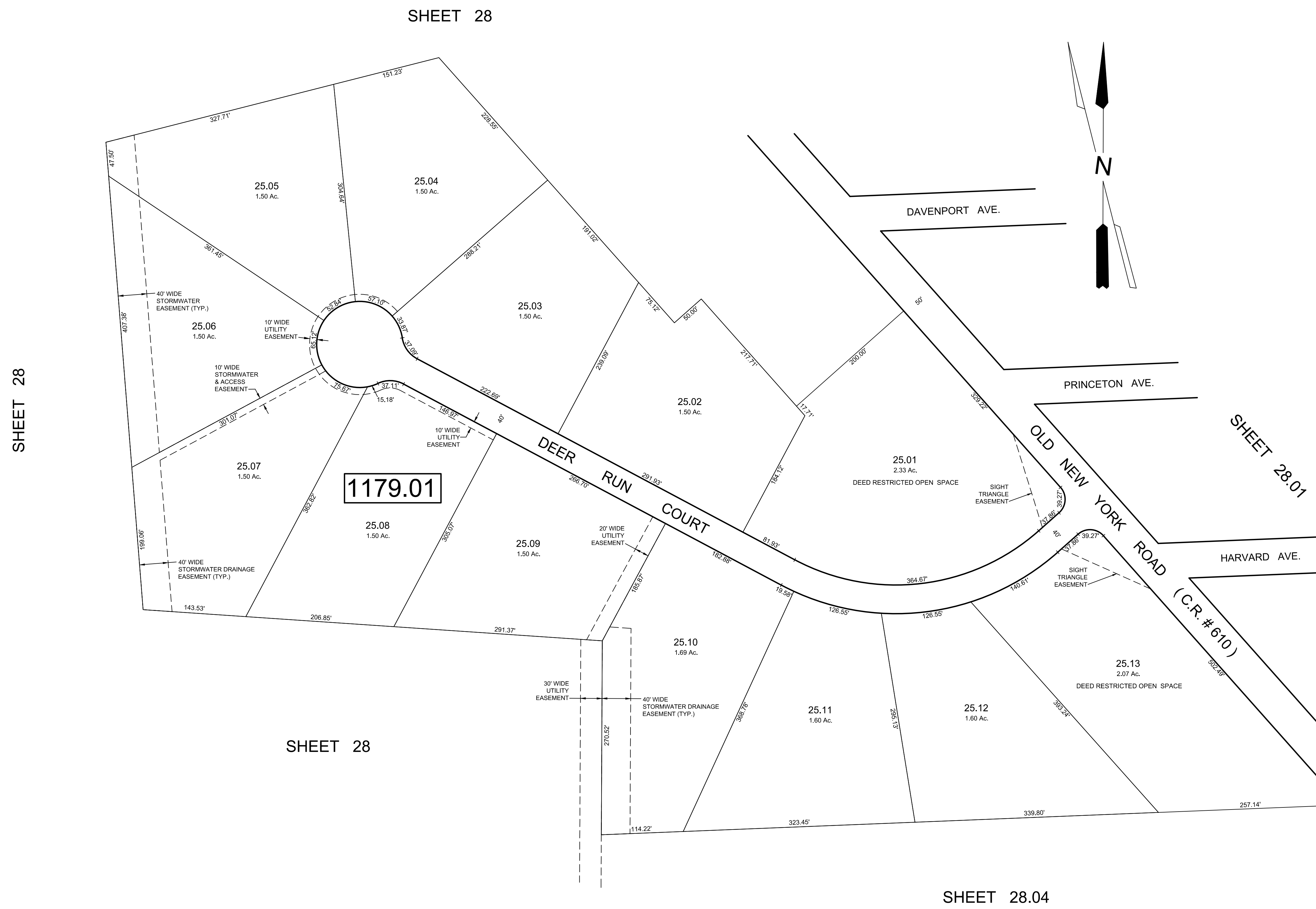


REVISIONS		
DATE	NAME	NO.



SHEET 28

SHEET 28.04

"ESTATES AT DEER RUN"

TAX MAP  
TOWNSHIP OF GALLOWAY  
ATLANTIC COUNTY, NEW JERSEY  
SCALE: 1" = 80' AUGUST 2008

---

DIXON ASSOCIATES  
313 E. JIMMIE LEEDS RD.,  
GALLOWAY, N.J. 08205

---

SAMUEL S. PREVITERA, P.L.S.  
N.J. LIC. No. 38976  
26 NORTH ROUTE 73, SUITE 200  
CEDAR BROOK, N.J. 08018

THIS SHEET HAS BEEN DRAWN USING COMPUTER AIDED DRAFTING / DESIGN (CAD/D) AND WAS DONE UNDER THE SUPERVISION OF SAMUEL S. PREVITERA, P.L.S., NEW JERSEY PROFESSIONAL LAND SURVEYOR LICENSE NO. 38976, AND DATED DECEMBER 31, 2006.