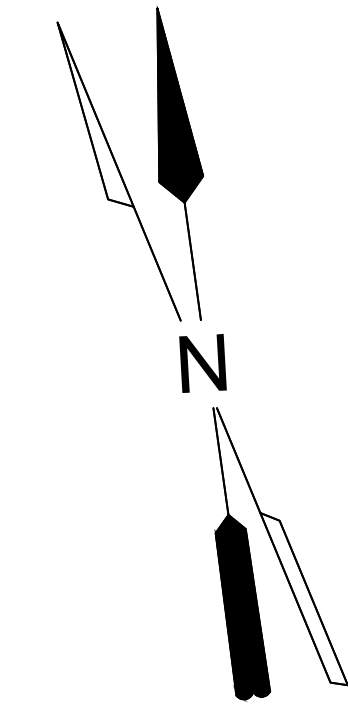
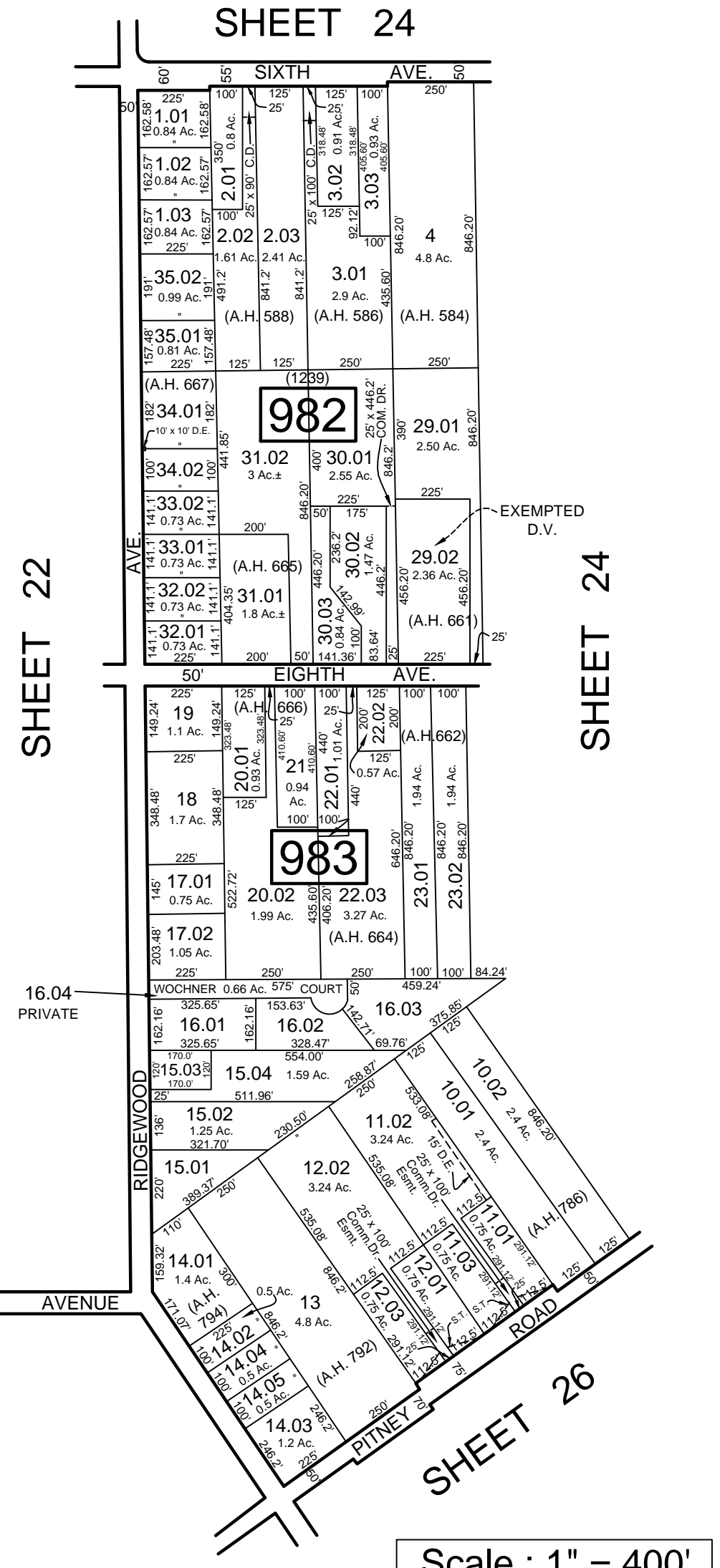
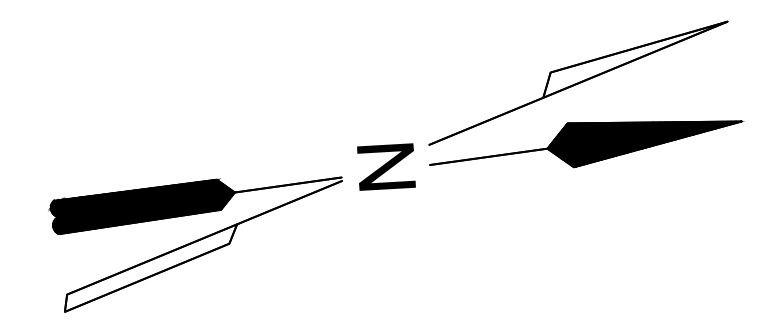
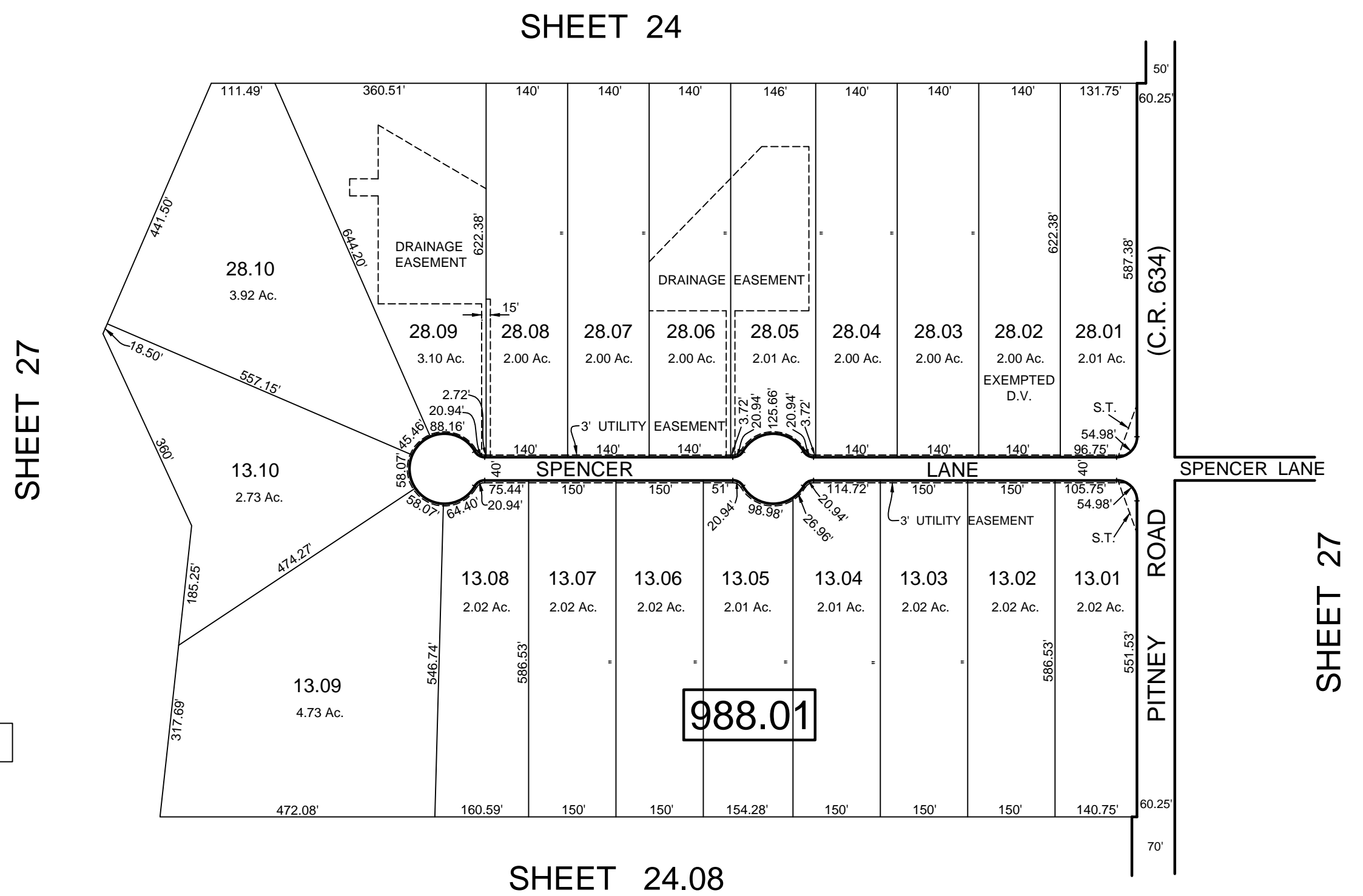


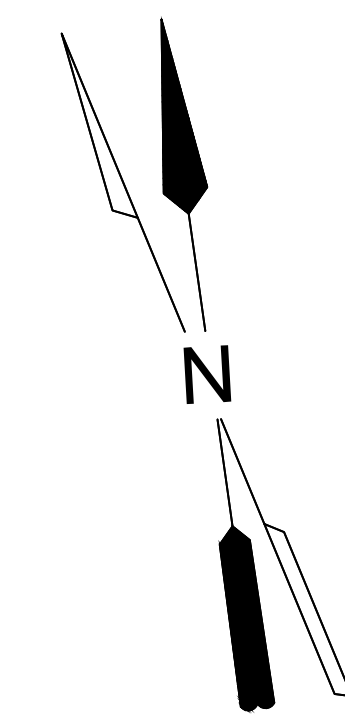
REVISIONS		
DATE	NAME	NO.



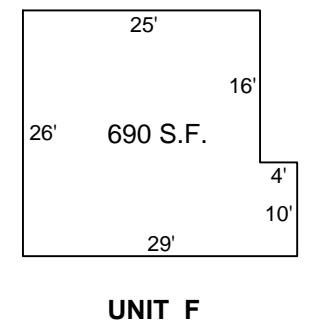
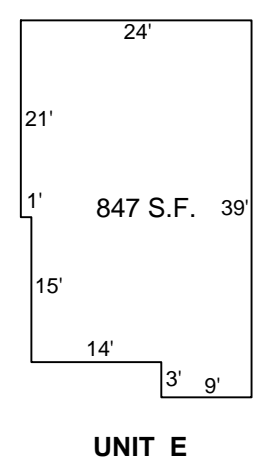
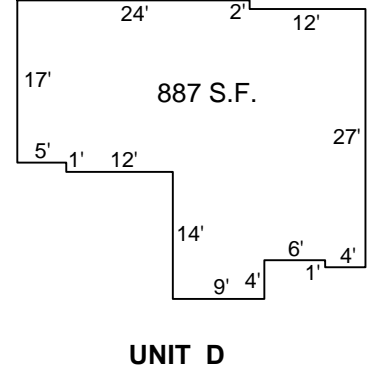
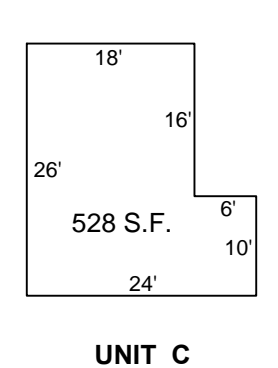
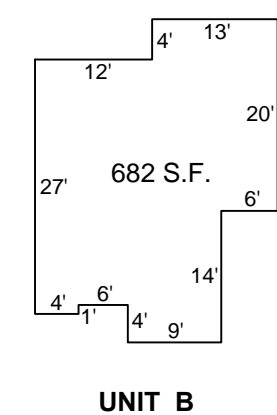
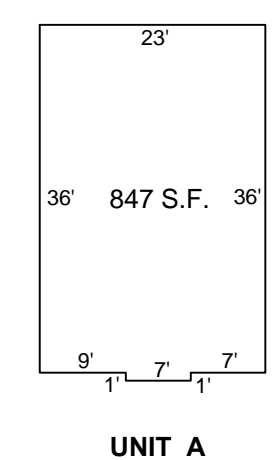
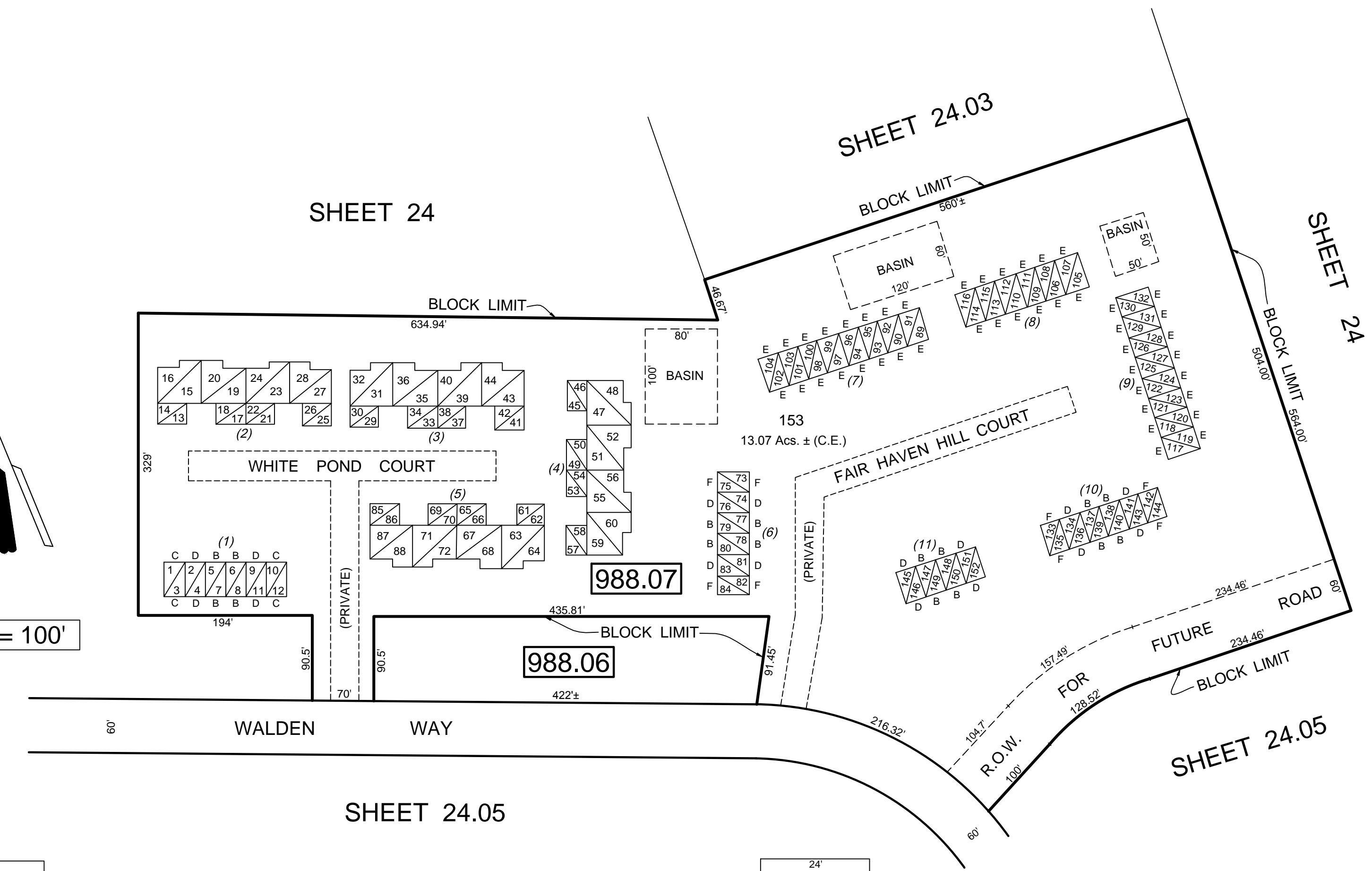
Scale : 1" = 200'



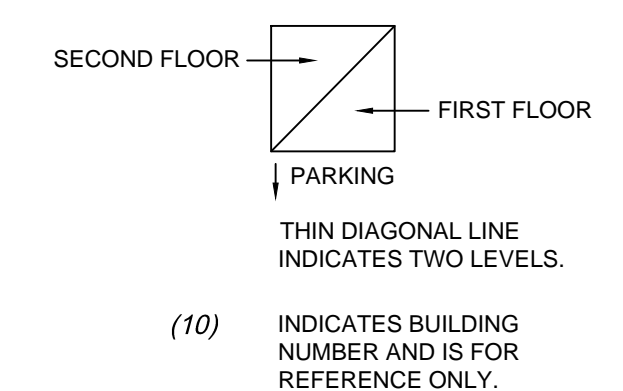
Scale : 1" = 400'



Scale : 1" = 100'



Scale : 1" = 20'



NOTE:  
 LETTERS "B.T." INDICATES NUMBER ON MAP OF "BILTMORE TERRACE" BT RELIANCE DEV. CO.  
 LETTERS "J.F." INDICATES NUMBER ON MAP OF J.F. ABBOTT.  
 LETTERS "A.H." INDICATES NUMBER ON MAP OF ABSECON HIGHLAND BY GILBERT & O'CALLAGHAM  
 LETTERS "D.V." INDICATES DISABLED VETERAN.

THIS SHEET HAS BEEN DRAWN USING COMPUTER AIDED DRAFTING / DESIGN (CAD/D) AND WAS DONE UNDER THE SUPERVISION OF SAMUEL S. PREVITERA, P.L.S., NEW JERSEY PROFESSIONAL LAND SURVEYOR LICENSE NO. 38976, AND DATED DECEMBER 31, 2006.

**TAX MAP**  
 TOWNSHIP OF GALLOWAY  
 ATLANTIC COUNTY, NEW JERSEY  
 SCALE: AS NOTED      JANUARY 2007  
 SAMUEL S. PREVITERA, P.L.S.  
 N.J. LIC. No. 38976  
 26 NORTH ROUTE 73, SUITE 200  
 CEDAR BROOK, N.J. 08018