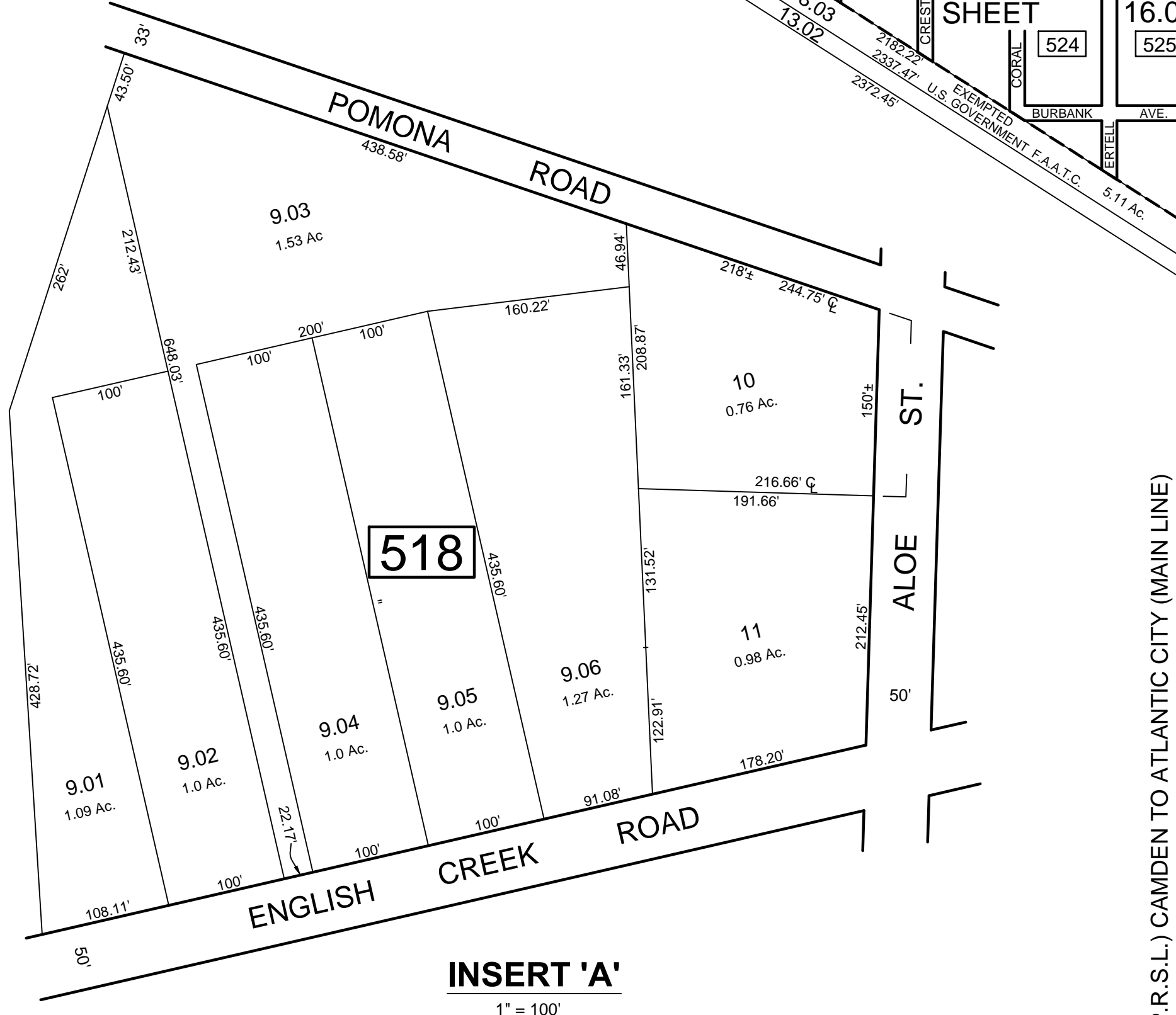
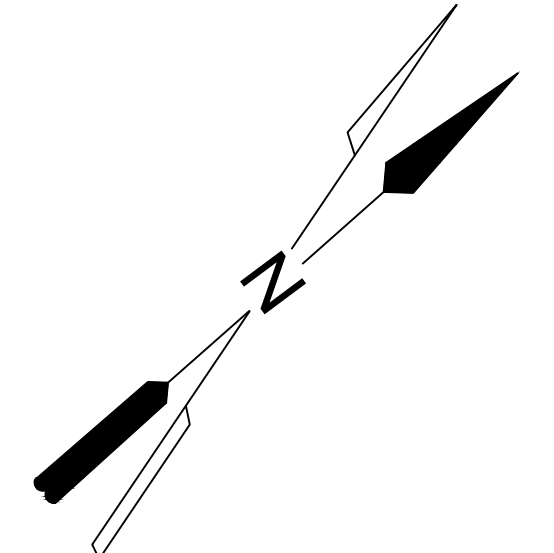
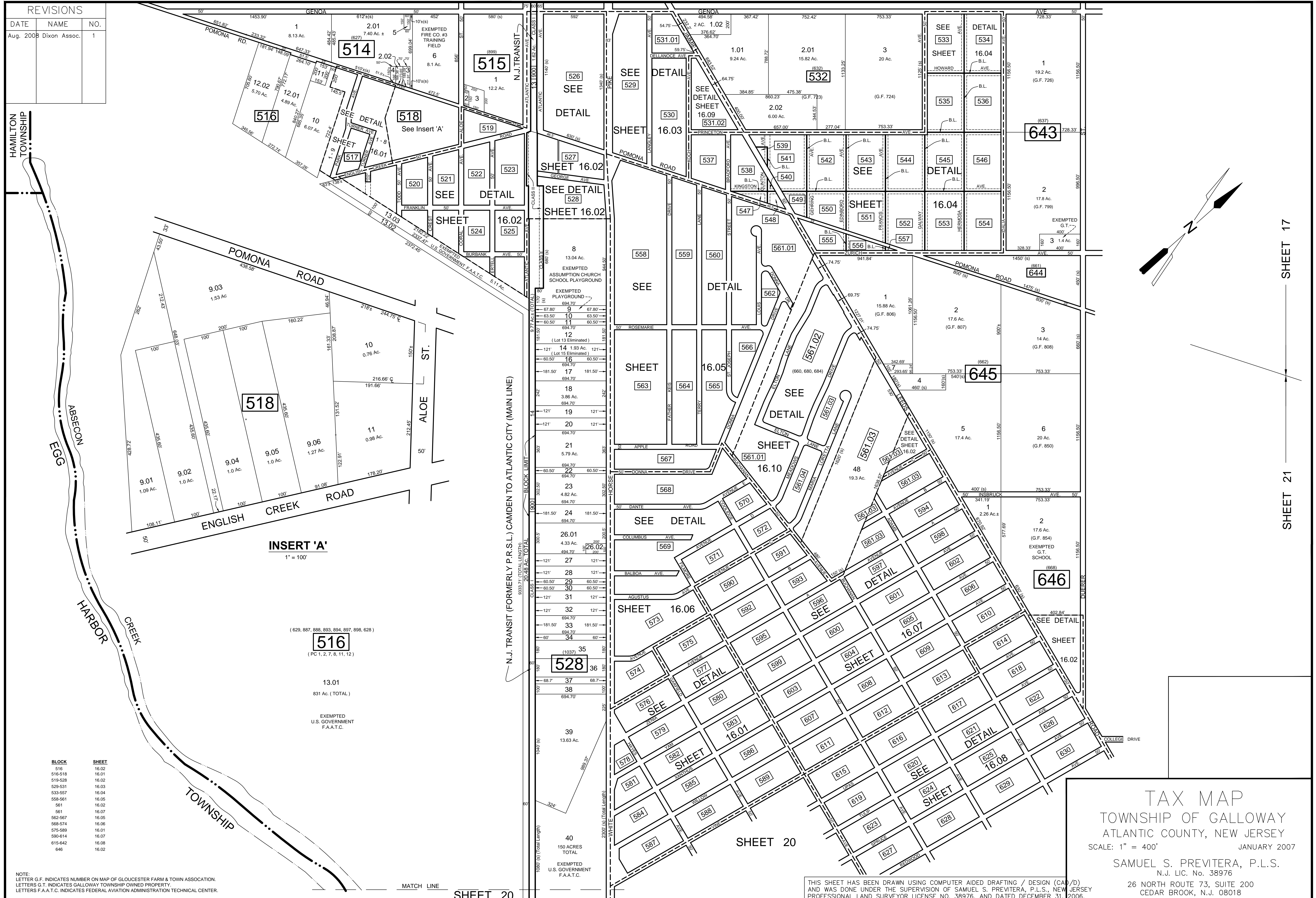


REVISIONS		
DATE	NAME	NO.
Aug. 2008	Dixon Assoc.	1



INSERT 'A'
1" = 100'

(629, 887, 888, 893, 894, 897, 898, 628)
516
(PC 1, 2, 7, 8, 11, 12)

13.01
831 Ac. (TOTAL)

EXEMPTED
U.S. GOVERNMENT
F.A.A.T.C.

528
13.63 Ac.

40
150 ACRES
TOTAL

EXEMPTED
U.S. GOVERNMENT
F.A.A.T.C.

BLOCK	SHEET
516	16.02
516-518	16.01
519-528	16.02
529-531	16.03
533-557	16.04
558-561	16.05
561	16.02
561	16.07
562-567	16.05
568-574	16.06
575-589	16.01
590-614	16.07
615-642	16.08
646	16.02

NOTE:
LETTER G.F. INDICATES NUMBER ON MAP OF GLOUCESTER FARM & TOWN ASSOCIATION.
LETTERS G.T. INDICATES GALLOWAY TOWNSHIP OWNED PROPERTY.
LETTERS F.A.A.T.C. INDICATES FEDERAL AVIATION ADMINISTRATION TECHNICAL CENTER.

TAX MAP
TOWNSHIP OF GALLOWAY
ATLANTIC COUNTY, NEW JERSEY
SCALE: 1" = 400'
JANUARY 2007
SAMUEL S. PREVITERA, P.L.S.
N.J. LIC. No. 38976
26 NORTH ROUTE 73, SUITE 200
CEDAR BROOK, N.J. 08018

THIS SHEET HAS BEEN DRAWN USING COMPUTER AIDED DRAFTING / DESIGN (CADD) AND WAS DONE UNDER THE SUPERVISION OF SAMUEL S. PREVITERA, P.L.S., NEW JERSEY PROFESSIONAL LAND SURVEYOR LICENSE NO. 38976, AND DATED DECEMBER 31, 2006.

SHEET 17
SHEET 21